



Calderdale Metropolitan Borough Council

CALDERDALE LOCAL PLAN TRANSPORT EVIDENCE BASE

Technical Note 9 : Assessment of Cumulative
Impact – 2018



Calderdale Metropolitan **Borough Council**

CALDERDALE LOCAL PLAN TRANSPORT EVIDENCE BASE

Technical Note 9 : Assessment of Cumulative Impact – 2018

TYPE OF DOCUMENT (VERSION) CONFIDENTIAL

PROJECT NO. 70018699

OUR REF. NO. 180706_HFHC_CUMULATIVEIMPACT_2.0

DATE: JULY 2018

Calderdale Metropolitan **Borough Council**

CALDERDALE LOCAL PLAN TRANSPORT EVIDENCE BASE

Technical Note 9 : Assessment of Cumulative Impact – 2018

WSP
Three White Rose Office Park
Millshaw Park Lane
Leeds
LS11 0DL
Phone: +44 113 395 6200
Fax: +44 113 395 6201
WSP.com



QUALITY CONTROL

Issue/revision	First issue	Revision 1	Revision 2
Remarks	Draft	V2 Following comments	
Date	14/06/2018	06/07/2018	
Prepared by	Helen French / Henry Cass	Helen French / Henry Cass	
Signature			
Checked by	Tom Randall	Tom Randall	
Signature			
Authorised by	Tom Randall	Tom Randall	
Signature			
Project number	70018699	70018699	
Report number	180614_HFHC_cumulativeimpact_1.0	180706_HFHC_cumulativeimpact_2.0	
File reference			

CONTENTS

1	INTRODUCTION	2
1.1	PROJECT BACKGROUND	2
1.2	THIS DOCUMENT	2
2	METHODOLOGY	3
2.1	INTRODUCTION	3
2.2	HOUSING	3
2.3	EMPLOYMENT	4
2.4	GROWTH CAP	4
2.5	TRIP CALCULATIONS	4
2.6	GROWTH OUTSIDE CALDERDALE	6
3	MODELLING RESULTS	7
3.1	INTRODUCTION	7
3.2	DO-MINIMUM MODELS	7
3.3	IMPACT OF DO-SOMETHING SCHEMES	7
3.4	IDENTIFYING SIGNIFICANT IMPACTS	10
3.5	OVERALL CONGESTION	10
3.6	HALIFAX	11
3.7	BRIGHOUSE	11
3.8	ELLAND	13
3.9	A58 CORRIDOR	15
3.10	BAILIFF BRIDGE	17
3.11	A629 AND A6026 CORRIDORS	17
3.12	SOWERBY BRIDGE	21
3.13	NORTH HALIFAX	24
3.14	HEBDEN BRIDGE	27
4	SUMMARY	28
4.1	METHODOLOGY	28

4.2 OUTPUTS	28
4.3 INTERVENTIONS	28

TABLES

Table 1 - Modelled growth in residential sites 2014-2032	3
Table 2 - NTEM Forecast Growth in Housing and Employment for Calderdale district	4
Table 3 – Multi-Modal Residential Trip Rates (per dwelling)	5
Table 4 – Multi-Modal Employment Trip Rates (per 100 sqm GFA)	5
Table 5 - Garden Suburbs Residential Trip Rates	5
Table 6 - Clifton Employment Site Trip Rates (Per 100sqm GFA)	6
Table 7 - NTEM Growth in Kirklees and Bradford	6
Table 8 - NRTF Traffic Growth (2014-2032)	6
Table 9 - Description of interventions necessary for mitigation of local plan impacts shown by modelling	28
Table 10 - Description of interventions necessary to support the local plan	30
Appendix A - Table 1 – Calderdale residential developments, including completed sites and residential portion of mixed-use	2
Appendix B - Table 2 – Calderdale employment developments, including employment portion of mixed-use	30
Appendix C - Table 3 – Bradford and Kirklees residential developments, including completed sites and residential portion of mixed-use	34
Appendix C - Table 4 – Bradford and Kirklees employment developments, including employment portion of mixed-use	36

FIGURES

Figure 1 - Modelled Traffic Flow Differences DM Model against DS Model, AM	9
Figure 2 - Modelled Traffic Flow Differences DM Model against DS Model, PM	9
Figure 3 - Worst Congested Nodes AM, only nodes with V/C > 85% plotted	10
Figure 4 - Worst Congested Nodes PM, only nodes with V/C > 85% plotted	11
Figure 5 – Brighouse Links Greater than 90% V/C, AM	12
Figure 6 - Brighouse Links Greater than 90% V/C, PM	13
Figure 7 - Elland Links Greater than 90% V/C, AM	14
Figure 8 - Elland Links Greater than 90% V/C, PM	15

Figure 9 - A58 Corridor Links Greater than 90% V/C, AM	16
Figure 10 - A58 Corridor Links Greater than 90% V/C, PM	17
Figure 11 - A629/A6026 Corridor Links Greater than 90% V/C, AM	18
Figure 12 - Ainley Top Links Greater than 90% V/C, AM	19
Figure 13 - A629/A6026 Corridor Links Greater than 90% V/C, PM	20
Figure 14 - Ainley Top Links Greater than 90% V/C, PM	21
Figure 15 – Sowerby Bridge links greater than 90% V/C, AM	23
Figure 16 – Sowerby Bridge links greater than 90% V/C, PM	24
Figure 17 – North Halifax links greater than 90% V/C, AM	25
Figure 18 - North Halifax links greater than 90% V/C, PM	27

APPENDICES

Appendix A - LOG OF CALDERDALE RESIDENTIAL SITES MODELLED

Appendix B - LOG OF CALDERDALE EMPLOYMENT SITES MODELLED

Appendix C - LOG OF BRADFORD & KIRKLEES DEVELOPMENT SITES MODELLED

Appendix D - AM 2032 MODELLED DELAYS

Appendix E - PM 2032 MODELLED DELAYS

Appendix F - CHANGE IN MODELLED DELAY BETWEEN 2014 AND 2032

1 INTRODUCTION

1.1 PROJECT BACKGROUND

- 1.1.1. WSP have been appointed by Calderdale Metropolitan Borough Council (CMBC) to provide evidence on transport-related issues in respect of the Local Plan.
- 1.1.2. WSP previously produced the following transport documentation on behalf of CMBC to support the draft local plan consultation in 2017. These demonstrate the implications that site allocations may have and have been used to inform the policies within the Plan.
- Technical Note 1: Future Network Baseline [TN1] (June 2016);
 - Technical Note 2: Implications of Settlement Growth [TN2] (July 2016);
 - Technical Note 3: Preferred Spatial Strategy [TN3] (April 2017);
 - Technical Note 4: Assessment of Cumulative Impact [TN4] (May 2017);
 - Technical Note 5: Hipperholme Sensitivity Test [TN5] (March 2017);
 - Technical Note 6: Site Apportionment [TN6] (July 2017);
 - Technical Note 7: Air Quality Constraints Assessment [TN7] (August 2016); and
 - Technical Note 8: Strategic Vision for South East Calderdale [TN8] (October 2016).
- 1.1.3. The documents listed above were based upon assessment of the evolving local plan site allocations. Following consultation by CMBC, further reviews of the sites to be allocated have taken place to refine the proposals and some recalculation of the housing numbers to be planned for has been necessary following revised central government guidance.
- 1.1.4. The latest set of sites to be allocated will form the submission draft of the local plan to be examined in public. Therefore, there is a need to refresh the traffic modelling and analysis of impacts based upon the latest information and comments received on the previous methodology.
- 1.1.5. Technical note 9 (May 2018) documents the review of the methodology used previously and makes some limited suggestions for change which have been carried forward to the modelling described in this note.

1.2 THIS DOCUMENT

- 1.2.1. This document is split into the following sections:
- Methodology for modelling
 - Modelling results for Do Minimum and Do Something
 - Summary

2 METHODOLOGY

2.1 INTRODUCTION

- 2.1.1. This section of the report describes the modelling carried out to analyse the cumulative impact of the preferred set of development sites to be carried forward into the Local Plan submission draft. Refinements have been made to the information and methodology used compared to the previous assessment of the Local Plan consultation draft
- 2.1.2. Traffic modelling has been carried out using both a do-minimum highway network, with fully committed schemes only, and a do-something network with schemes included that are progressing as part of the West Yorkshire Plus Transport Fund.
- 2.1.3. The demand for travel has been calculated using the preferred set of allocated housing and employment sites provided by CMBC in June 2018, alongside historic information regarding completions of development.
- 2.1.4. The Local Plan sites that have been modelled represent a 'maximum growth scenario' for the network in which all development comes forward by the end of the plan period. This is modelled under conditions that can be described as "business as usual", with only limited highway improvements and no changes in demand that represent significant shift away from use of the private car or reduced levels of travel. For example, rapidly changing travel and lifestyle trends such as increased home-working and online shopping are not represented.

2.2 HOUSING

- 2.2.1. The methodology used for modelling Calderdale Local Plan growth in the pre-consultation stage has been updated with new information received, including updating model matrices to reflect predicted traffic increases across the modelled area. All housing developments have been included for modelling the Local Plan.
- 2.2.2. The Local Plan period starts in 2012 while the Calderdale Strategic Transport Model base year is 2014. The development growth delivered between 2012 and 2014 was therefore subtracted by utilising information for sites that have been built during this period. This information was supplied by CMBC from records of housing completions between January 2008 and September 2016. Updated information provided by CMBC as of May 2018 includes completed developments 2014-2017 and proposed developments for the remaining duration of the local plan totalling 16,899 units to be incorporated into the revised model. The breakdown between built and allocated sites is shown in Table 1 below.

Table 1 - Modelled growth in residential sites 2014-2032

Type	Residential Units
Built	2,522
Allocated	14,377

- 2.2.3. The list of sites includes 661 individual sites, 447 of which are less than 10 units while 11 are greater than 200 units.
- 2.2.4. The log of Calderdale housing sites used can be found in Appendix A. An indication of the likely development of each site during the 15 years of the Local Plan is also contained within the table.
- 2.2.5. Outside Calderdale, specific developments have only been included for Kirklees and Bradford sites within a 2km buffer of the border with Calderdale as these are felt to be most influential on the Calderdale network. Other areas of Kirklees and Bradford are not represented in enough detail in the model to apply specific development growth. All other areas have used the NTEM v7.2 dataset to apply an appropriate factored growth in demand.
- 2.2.6. It should be noted that subsequent to the modelling exercise, sites were removed from the Calderdale list of allocations and the Kirklees Local Plans, these have been highlighted in Appendices A to C.

2.3 EMPLOYMENT

- 2.3.1. Similar to housing, the methodology for representing employment sites has changed since the previous model run for the pre-consultation stage. An updated list of Local Plan sites has been made available following the Employment Land Study undertaken on behalf of CMBC. The sites used make up the total employment growth between 2016 and 2032.
- 2.3.2. The log of Calderdale employment sites (including the employment portion of mixed use sites) modelled can be found in Appendix B.
- 2.3.3. Outside Calderdale, employment growth has been modelled using NTEM v7.2 data with the exception of Kirklees and Bradford where sites within 2km of the authority boundary have been specifically modelled. These sites have been included as they will show the most interaction with the Calderdale network and the model is detailed enough in this area to model sites specifically.
- 2.3.4. It should be noted that subsequent to the modelling exercise, sites were removed from the Calderdale list of allocations and the Kirklees Local Plans, these have been highlighted in Appendices A to C.

2.4 GROWTH CAP

- 2.4.1. In model forecasting the overall cap on growth of housing and employment (which subsequently informs the growth in modelled traffic) is usually based on the national trip end model (NTEM). This is a standard way of capping growth when forecasting. The 2012 to 2032 growth figures from NTEM v7.2, equivalent to the Local Plan period, are shown in Table 2 below.

Table 2 - NTEM Forecast Growth in Housing and Employment for Calderdale district

	NTEM v7.2 Growth 2012-2032
Households	15,565
Jobs	9,938

- 2.4.2. The NTEM version 7.2 figures are significantly lower than the Local Plan target for housing of 16,899 units (2014-2032) which if applied would give a reduction in the modelled quantum of growth across the district and would not fully represent the delivery of the local plan. As mentioned in 2.1.4 above, the local plan assumes that all development sites will be built out by the end of the plan period which could be viewed as optimistic, whereas NTEM could be seen as a more realistic forecast.
- 2.4.3. Employment land allocated by CMBC as of May 2018 assumes a target increase of 8,295 jobs (net) in the district. An additional allowance is made for employment land lost as well as a flexibility margin which allows a choice of sites for businesses to locate in. The total allocation of land for employment (B-type only) use is 97ha, of which approximately 84ha is considered developable.
- 2.4.4. Assumptions about expected plot-ratios for these sites were applied by CMBC in the calculation of site area for B-uses provided to WSP. A flexibility margin of 8.7ha was incorporated by CMBC into the calculation of the total 97ha allocation, and in order to model a 'worst case' scenario this was considered fully adopted by the end of the plan period. Conversion to total jobs assumed the same proportion as the land area for the target jobs. This brings the net jobs modelled to 11,030 which, whilst above the predicted NTEM growth seems reasonable given the ambitions of the Local Plan and the need for this model to test a plausible maximum growth scenario. The remaining land allocated is assumed to correspond to displacement from other areas of the
- 2.4.5. It is inappropriate to use the NTEM v7.2 forecast for growth in households as a cap, as it would mean that areas of the model without specific development sites would compensate by seeing a large reduction in growth which is not expected. Therefore, a cap has been set that matches the total households for the Local Plan.

2.5 TRIP CALCULATIONS

- 2.5.1. Developments have been attributed a trip rate depending on site use by taking the total multi-modal trip rate and applying a local vehicle class proportion to derive the car trip rate. Individual trip rates, based on prior modelling work, have been applied to the two Garden Suburbs and the Clifton Business Park development.

More detailed site assessments have been undertaken for these sites and these therefore represent a more accurate source of trip rate information.

- 2.5.2. Trip rates for developments within Calderdale and a 2km buffer of the borders with Bradford and Kirklees have been calculated for each site. The total multi-modal trip rate for each development type has been collected from TRICS data and the car trips have been split using a local car mode split based on 2011 Census Journey to Work data¹.
- 2.5.3. For residential sites, multi-modal trip rates were extracted for privately owned and affordable local authority houses and flats and the weighted average trip rate for residential land use was calculated based on a 83/17% split of houses to flats. This multi-modal trip rate was then converted into the car trip rate for residential sites by taking the MSOA that the development was in and using the proportion of journey to work trips originating in that MSOA that were made by car. Car usage for travel from residential sites ranges from 49% to 82% with an average of 64%.
- 2.5.4. For employment trips, three land use types have been used: B1 (Business), B2 (General Industrial) and B8 (Storage and Distribution). B1 trip rates have been calculated using an average of Office and Business Park TRICS classifications, B2 from Industrial Unit and Industrial Estate and B8 from Warehouse (Commercial) and Self-Storage. The multi-modal trip rates were converted into car trip rates for employment sites by taking the MSOA that the development was in and using the proportion of journey to work trips arriving in that MSOA that were made by car. Car usage for travel to employment ranges from 56% to 81% with an average of 66%.
- 2.5.5. The multi-modal trip rates used are shown in Table 3 and Table 4.

Table 3 – Multi-Modal Residential Trip Rates (per dwelling)

	AM Arrival	AM Departure	IP Arrival	IP Departure	PM Arrival	PM Departure
	0.187	0.705	0.244	0.232	0.524	0.268

Table 4 – Multi-Modal Employment Trip Rates (per 100 sqm GFA)

Land Use by Car Split	AM Arrival	AM Departure	IP Arrival	IP Departure	PM Arrival	PM Departure
B1 – Business	1.958	0.241	0.497	0.536	0.179	1.623
B2 – Industrial	1.271	0.252	0.306	0.319	0.107	1.036
B8 – Storage & Distribution	0.110	0.070	0.094	0.097	0.055	0.102

- 2.5.6. Individual trip rates have been calculated for the Clifton Business Park site and garden suburbs. More detailed site assessments have been undertaken for these sites and these therefore represent a more accurate source of trip rate information. The trip rates used for these sites are shown in Table 5 and Table 6.

Table 5 - Garden Suburbs Residential Trip Rates

	AM Arrival	AM Departure	IP Arrival	IP Departure	PM Arrival	PM Departure
Trips per Dwelling	0.159	0.589	0.227	0.198	0.417	0.257

¹ Census 2011: WU03EW - Location of usual residence and place of work by method of travel to work

Table 6 - Clifton Employment Site Trip Rates (Per 100sqm GFA)

	AM Arrival	AM Departure	IP Arrival	IP Departure	PM Arrival	PM Departure
B2	0.4828	0.2556	0.2858	0.28826	0.2769	0.4047
B8	0.3266	0.0355	0.035	0.04118	0.2556	0.213

- 2.5.7. Previously, a factor of 0.4 was applied to all employment sites to calculate the floor area from the site area (for use with trip rates). In the updated set of data received from CMBC, values for floor area have been provided based on their knowledge of the individual sites.

2.6 GROWTH OUTSIDE CALDERDALE

- 2.6.1. For areas outside Calderdale, future growth has been based on national forecasts. Given the close interaction with Kirklees and Bradford, more detailed site specifics have been modelled in the same way as detailed above. The overall housing and employment growth applied for Kirklees and Bradford is shown in Table 7 below.

Table 7 - NTEM Growth in Kirklees and Bradford

	NTEM v7.2 Growth 2012-2032 Kirklees	NTEM v7.2 Growth 2012-2032 Bradford
Households	25,606	31,486
Jobs	16,483	21,008

- 2.6.2. The NTEM figures for residential growth in Kirklees are broadly similar to those set out in the council's local plan (currently un-adopted). Therefore, they have been deemed suitable for use in assessing the impact of neighbouring growth on the Calderdale road network. The provision of jobs aspired to in the Kirklees local plan greatly exceeds the NTEM forecast at 23,000 jobs. To reflect the impact of the high growth aspirations of Kirklees upon Calderdale, the employment sites within a 2km buffer of the Calderdale boundary have been included explicitly, but the growth for the zones in the rest of the district have factors applied such that the district as a whole is constrained to the NTEM forecast demand shown above. The growth in Bradford was similarly modelled with explicit development close to Calderdale and a constraint to NTEM district growth.

- 2.6.3. Remaining areas outside Calderdale, Kirklees and Bradford have used National Road Traffic Forecast figures (NRTF) to inform the forecast growth in travel. This has been decided as the external areas of the model are not detailed enough for NTEM to be used. Where the detailed model network area ends, NRTF growth Figures between 2014 and 2032 have been used; therefore, neighbouring authorities (not explicitly modelled) and the rest of England have used NRTF. The NRTF growth factors used are shown in Table 8 below.

Table 8 - NRTF Traffic Growth (2014-2032)

	Cars	Light Goods Vehicles	Other Goods Vehicles (OGV1)	Other Goods Vehicles (OGV2)
NRTF	1.268	1.479	1.091	1.164

3 MODELLING RESULTS

3.1 INTRODUCTION

- 3.1.1. This section of the report outlines the results based on the model runs as described above. This discussion helps to summarise the nature of predicted congestion on the network, and informs the associated infrastructure requirements and recommendations to be considered alongside the Local Plan.
- 3.1.2. Two model runs have been undertaken with the same development demand but differing networks. A do-minimum network has been used, which only incorporates committed schemes, and a do-something network that also includes the A629 Phases 1a and 1b given the developed stage these improvements are at in the West Yorkshire + Transport Fund (WY+TF) process. Additionally, the do-something network includes Clifton Link Road, which has now received central government funding, that connects the A643 and A644 through Clifton Business Park.
- 3.1.3. The do-something network has not included other proposed WY+TF schemes such as the later phases of the A629 scheme and improvements to the A641 corridor as although they are progressing they have not been developed sufficiently to be coded into the model network at this time. There is also less certainty over their delivery within the plan period given the early stage of development and design which these schemes are currently at.
- 3.1.4. The analysis has focussed on the impacts seen at a number of key locations identified in previous reporting and any new sites that have emerged. The plots showing the change in modelled delay between the base model of 2014 and the 2032 model are included as an appendix to this report.
- 3.1.5. Appendix D and E show the AM and PM delays respectively.
- 3.1.6. Appendix F shows the comparison between 2032 and 2014 delay.

3.2 DO-MINIMUM MODELS

- 3.2.1. The Do-Minimum modelling shows levels of congestion that would be unacceptable without further intervention. The do-minimum scenario has only a small number of committed highway improvements included within the network.
- 3.2.2. The do-minimum models show that current areas of constraint are inevitably worsened as a result of the planned level of growth associated with the local plan (given the “business as usual” nature of the methodology).

3.3 IMPACT OF DO-SOMETHING SCHEMES

- 3.3.1. As described above, the modelling of the Local Plan sites has been undertaken with a “do-minimum” network as well as a “do-something” network with highway improvements which although not strictly committed are progressed enough that they have a reasonable level of certainty to their implementation.
- 3.3.2. The demand for the do something model remains the same as the do-minimum scenario, therefore giving a direct like-for-like comparison between the two.

The overall impact on traffic flows with the introduction of the A629 phases 1a and 1b and Clifton link road in the “do-something” scenario is shown below in

Figure 1 and Figure 2.

Figure 1 - Modelled Traffic Flow Differences DM Model against DS Model, AM

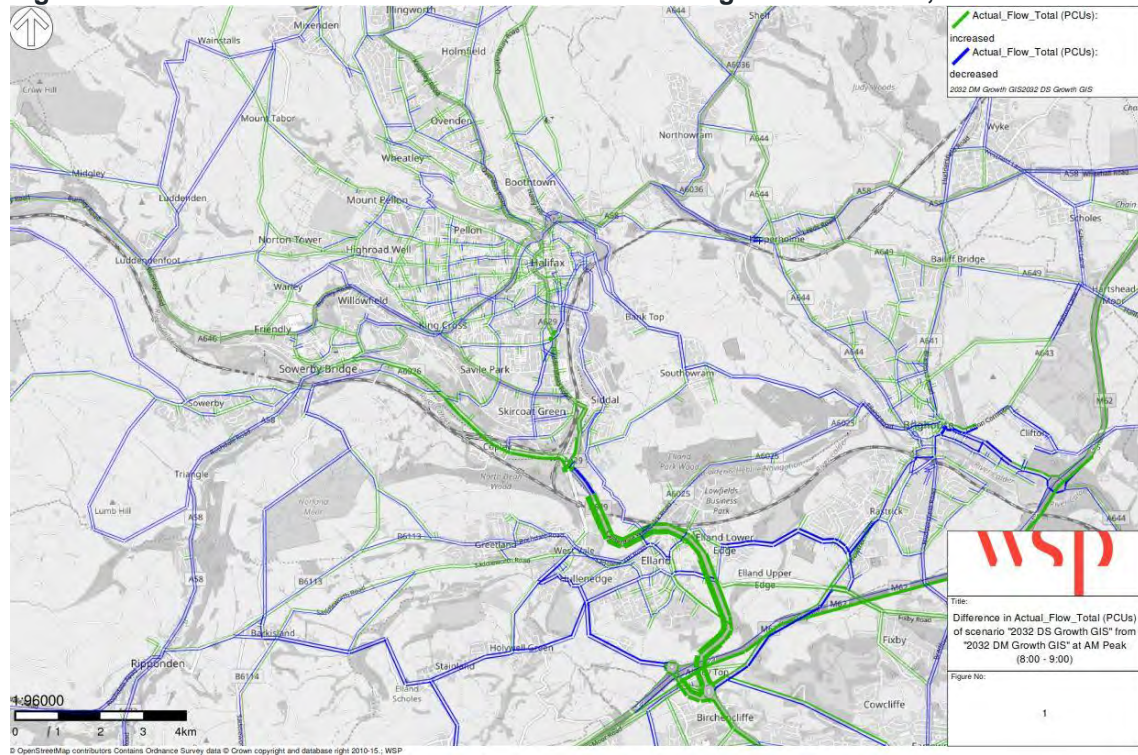


Figure 2 - Modelled Traffic Flow Differences DM Model against DS Model, PM



3.3.3. It can be seen that the improvements along the A629 draw additional traffic along the route from the M62 and in turn reduce traffic westbound through Brighouse, Southowram and also parts of Elland. This gives a benefit to some areas that were highlighted as issues in previous reports.

3.4 IDENTIFYING SIGNIFICANT IMPACTS

3.4.1. In order to identify the areas in the DS model with significant congestion, the output from the modelling has been examined in terms of the ratio of volume over capacity (V/C). This compares the modelled traffic flow over an hour to the modelled capacity for an hour. The junctions with at least one arm showing a V/C ratio of greater than 85% (which is generally accepted as the point where congestion begins) and traffic flow of greater than 350 passenger car units (PCU) were identified (thereby excluding points where negligible flows are modelled).

3.4.2. The subsequent analysis of these points on the model network, alongside local knowledge gave rise to the specific locations described below which show worsened congestion as a result of the CMBC Local Plan growth.

3.5 OVERALL CONGESTION

3.5.1. The significantly congested points of the district have been identified in the model outputs using the method described in Section 3.3.

3.5.2. The areas of significant congestion are identified below in Figure 3 and

3.5.3.

3.5.4.

3.5.5. Figure 4 for AM and PM, and are discussed in detail in the remainder of this report. Key locations of significant congestion, where a number of points are clustered, can be seen in Brighouse, Hipperholme, Stump Cross, Ainley Top, Sowerby Bridge, Godley Road/New Bank and in Ovenden.

Figure 3 - Worst Congested Nodes AM, only nodes with V/C > 85% plotted



Figure 4 - Worst Congested Nodes PM, only nodes with V/C > 85% plotted



- 3.5.6. The following sections of this report show links with high V/C percentage in the locations identified above (indicated by side of the road travelled by vehicles). This output shows the overall constraint of the link in terms of capacity, which is typically a result of the downstream junction.
- 3.5.7. It should be noted that the length of the link is purely a result of the network coding used rather than showing queue length.

3.6 HALIFAX

3.6.1. As can be seen in Figure 3 and

3.6.2.

3.6.3.

3.6.4. Figure 4, there are some points of congestion within Halifax town centre which are greater than 85%. However, the subsequent increase in delays from the 2014 model with the local plan growth applied is less than 1 minute and therefore not considered significant.

3.6.5. There are a number of elements in phase 2 of the A629 scheme which are envisaged to be able to mitigate this level of worsened performance.

3.7 BRIGHOUSE

3.7.1. Brighouse has had a large level of development included within the settlement, with significant additional housing and employment included with the Garden Suburbs and the Clifton Business Park site.

3.7.2. The key impacts seen in Brighouse are listed below:

- The western Ludenscheid Link roundabout experiences southbound and northbound movements that are over capacity.
- The traffic related to the large Thornhills housing site has a major impact on congestion and delays at the junction of the A644 and A643.
- The Thornhills site also produces an impact as a result of additional traffic using inappropriate links in the network, e.g. Thornhills Beck Lane.
- Existing congestion is worsened through the centre of Brighouse on the A641. The model showing an increase in delay of 4 minutes northbound and 1 minute southbound in the AM peak and 2 minutes in each direction in the PM peak.

3.7.3. Junction 25 of the M62 shows links at the junction to be close to capacity. These are shown on the roundabout itself rather than the A644 or the M62.

3.7.4. The links on the network with a V/C ratio of greater than 90% in the AM are shown in Figure 5 below. These generally show the constraint of downstream junctions at:

- Ludenscheid Link western roundabout (A6025/A644/A643)
- Wakefield Road/Clifton Road roundabout (A644/A643)
- Ludenscheid Link eastern roundabout (A641/A643)
- Huddersfield Road/Clifton Road (A641/A643)
- Brookfoot Lane/Elland Road (A6025)
- A641/Mill Royd Street

3.7.5. Other links showing V/C which indicate problematic congestion are shown on the A643 northbound (south of the town centre). In these locations the link capacity causes a constraint rather than a downstream junction.

Figure 5 – Brighouse Links Greater than 90% V/C, AM



3.7.6. The same areas are shown as capacity constraints in the PM peak hour, as shown in Figure 6.

Figure 6 - Brighouse Links Greater than 90% V/C, PM



- 3.7.7. The key capacity constraints that show unacceptable levels of congestion in Brighouse are the worsening of existing issues, however these appear to be resolvable. The problem locations align with the proposed A641 corridor WY+TF scheme, which is currently at a pre-feasibility stage and therefore can be tailored to suit the impacts of the Local Plan, and the significant transport infrastructure that will form part of the master planning of the Thornhills garden suburb site and Clifton employment site.

3.8 ELLAND

- 3.8.1. Elland as modelled shows the impact of large housing sites on the land to the north of Elland on the opposite side to the A629, and the sites on Saddleworth Road.
- 3.8.2. As in the base model, the most significant congestion is shown at the two junctions at West Vale which is worsened via the Local Plan growth. There is an increase in delay of around 2 minutes for the eastbound arms at both junctions with the local plan traffic. All other increases in delay seen in Elland are less than 40 seconds, except for Park Road which experiences larger increases in delays due to nearby developments.
- 3.8.3. The links on the network with a V/C ratio of greater than 90% in the AM are shown in Figure 7 below. These show a mixture of constraint from downstream junctions and link capacity. However, where the delays are observed at a junction, the constraint issues are generally only seen on a single arm. The key locations in Elland with greater than 90% V/C are:
- Rochdale Road/Stainland Road (Junction capacity).
 - Saddleworth Road/Stainland Road (Junction capacity).
 - Hullenedge Road/Long Wall/Jepson Lane (Junction capacity).
 - Park Road (A6025) (Link capacity).
 - Elland Riorges Link/Elland Lane (junction capacity).
 - Huddersfield Road/South Lane (link capacity).
- 3.8.4. An issue is also seen on the new link formed between Stainland Road and the A629 as part of the A629 Phase 1b. However, this scheme has not been designed with the consideration of full local plan growth and the priority for the scheme is the A629 movement.

- 3.8.5. It should also be noted that stage 4 of the A629 scheme has not been modelled, as the scope is not yet confirmed, which is expected to benefit the centre of Elland and will contribute to mitigating the issues seen below.
- 3.8.6. The AM worst congested junctions are shown in Figure 7 below.

Figure 7 - Elland Links Greater than 90% V/C, AM



- 3.8.7. Elland shows a similar trend of capacity constraint in the PM peak, with the most significant congestion occurring at:
- West Vale junctions.
 - Dewsbury Road/Southgate/Huddersfield Road junction.
 - A6025 Park Road/ A629.
- 3.8.8. As in the AM peak, the only significant additional delay (more than 1minute) is seen at the West Vale junctions. Additional delay of around 1 minute is seen southbound on Stainland Road and Rochdale Road eastbound sees 1½ minutes of additional delay.
- 3.8.9. Figure 8 shows the congestion modelled in Elland for the PM peak.

Figure 8 - Elland Links Greater than 90% V/C, PM



- 3.8.10. The issues raised in Elland are generally localised in nature and appear to be resolvable with limited traffic management measures and minor junction improvements. The later stages of the A629 corridor improvements will also bring relief to the town centre.
- 3.8.11. The two West Vale junctions need to be treated as a whole when looking at interventions as there will likely be a need to rationalise traffic movements and apply area wide traffic management.

3.9 A58 CORRIDOR

- 3.9.1. A number of points along this corridor show significant congestion, but again are a worsening of current congestion issues.
- 3.9.2. The Wyke Lion junction shows an increase in delay, due to the future traffic growth, for the eastbound movement of over 5 minutes and around 30 seconds for the westbound and northbound arms.
- 3.9.3. There are several developments in the Hipperholme area in the forecast models which result in increases in delay on roads in the village. There are delay increases seen between 2014 and 2032 of over 3 minutes on Denholme Gate (A644) and 3 minutes on Leeds Road (A58). Tanhouse Hill shows a high V/C ratio, with additional delays of 2½ minutes eastbound.
- 3.9.4. There is also a point of significant congestion seen at Stump Cross with almost 2½ minutes additional delay for the Bradford Road arm (A6036). Further west on the A58 at New Bank/Beacon Hill Road the current congestion is only worsened slightly with Beacon Hill Road seeing additional delay of around 1 minute.
- 3.9.5. The modelled congestion along the A58 corridor in the AM is shown in Figure 9 below.

Figure 9 - A58 Corridor Links Greater than 90% V/C, AM



- 3.9.6. In the PM peak the signalised junction at Wyke Lion shows capacity issues for the east/west movements, with around 2½ minutes additional delay westbound and 1 minute eastbound. The north and south movements show additional delay of less than 1 minute each.
- 3.9.7. Hipperholme cross roads follows a similar trend to the AM peak with the existing issues being worsened.
- The northbound A644 arm is over capacity at 105% V/C, which results in additional delays of over 1 minute.
 - The westbound arm of the A58 is at 98% in the base, and moves to 106% in the future year. This results in an increase in delay of around 1½ minutes.
 - Wakefield Road sees additional delay of over 1½ minutes in the PM peak.
- 3.9.8. Away from the cross roads the effect of re-routing is seen at Bramley Lane / Denholme Gate Road which shows a large increase in V/C from 88% in the base to 105% in the future year. This leads to over 2 minutes of additional delay for this movement from the A58 East to the A644 North.
- 3.9.9. Again, the movement eastbound on Halifax Old Road shows a high V/C ratio and this gives increased delay of around 1 minute.
- 3.9.10. Stump Cross is also congested in the PM peak as a result of the tidal traffic flow from Halifax. The A58 movement from Halifax sees additional delay of 1 minute.
- 3.9.11. The PM congestion on the A58 corridor is shown in Figure 10.

Figure 10 - A58 Corridor Links Greater than 90% V/C, PM



- 3.9.12. From the analysis above there are significant issues shown at both Wyke Lion, for A58 traffic, and at Stump Cross, for A6036 traffic. There are increases in delays at Hipperholme Crossroads that add to the already significant issues currently seen at this junction. It is expected that a comprehensive corridor study for the A58 will address these issues in a holistic manner (including public transport modes) and is also likely to incorporate the A6036 within its scope.

3.10 BAILIFF BRIDGE

- 3.10.1. Although Bailiff Bridge and Wyke don't have any significant development modelled explicitly, they are affected by the traffic demands from the wider area.
- 3.10.2. Significant additional traffic uses the junction at Bailiff Bridge in the AM peak, showing an increase in V/C to 106% on the eastbound approach. This gives a 2 minute increase in delays over the base year situation.
- 3.10.3. In the PM, Bailiff Bridge shows the southbound arm of the A641 Bradford Road close to capacity in the base year, which then moves to over capacity at 102% in 2032. This leads to an increase in delay of over 1 minute. On all other arms there are smaller increases in delay of less than a minute.
- 3.10.4. The A641 corridor is being addressed as part of a future WY+TF scheme which can take into account the impacts of the Local Plan. Given the level of additional delay modelled at Bailiff Bridge it is reasonable to expect the scheme to be able to mitigate this worsening.

3.11 A629 AND A6026 CORRIDORS

- 3.11.1. The A629 has been modelled with both the Phase1a scheme and the Phase 1b scheme given the greater level of detail known and the stage in the funding approvals process each is currently at. As shown previously, this has a significant impact on improving the flow of traffic through the corridor and relieves the majority of congestion, however with the growth in traffic as a result of the Local Plan developments some points of congestion still remain.
- 3.11.2. Jubilee Road and the merging of the two lanes between Phase 1a and 1b are shown to be over capacity due to the movements along the corridor. This is as a result of the additional traffic attracted to the A629 in both the northbound and southbound directions. There is an increase in delay of around 5 minutes shown at this

point, however there is a greater improvement in delay shown upstream at the Calder & Hebble junction which compensates for this.

- 3.11.3. Although not modelled at this stage due to lack of clarity on the detail, the Phase 1b scheme will include an improvement scheme at Jubilee Road, with the aim of carrying two lanes through northbound on the A629 corridor between the Phase 1a and Phase 1b scheme.
- 3.11.4. The A6026 shows issues with both the junction with Copley Lane and the capacity of the A6026 itself at this point as a result of additional demand for travel and the improvements made at the Calder & Hebble junction on the A629. This gives an increase in delay of around 2½ minutes westbound. This would need to be addressed separately to the A629 schemes and may be a relatively simple improvement to the operation of the signals at this point.
- 3.11.5. The modelled points of significant congestion on the A629 in the AM peak are shown below in Figure 11.

Figure 11 - A629/A6026 Corridor Links Greater than 90% V/C, AM



- 3.11.6. Ainley Top Junction (Junction 24 of the M62) shows a number of points of high V/C as shown in Figure 12. However these are mostly current issues that are worsened, with significant increases in delay seen at:
 - The westbound off slip from the M62 (2½ minute delay increase).
 - Blackley Road entry to the northern roundabout (nearly 6 minutes delay increase).
 - Link capacity issues eastbound on slip to the M62 (nearly 7 minute delay increase).
 - Link capacity issues on Lindley Moor Road (A643) (1minute increase in delay in both directions).

Figure 12 - Ainley Top Links Greater than 90% V/C, AM



- 3.11.7. Due to the location of Ainley Top, these points of additional congestion are significantly impacted by growth outside Calderdale, which will need to be considered when thinking about the need for intervention. However, there appears to be significant scope for the A629 Phase 4 scheme to address the more minor impacts and a need to engage with Highways England to understand their aspirations for capacity improvements to the slip roads and the impact of a possible Junction 24a which will take traffic away from Ainley Top.
- 3.11.8. The A629 shows a similar trend in the PM peak to the AM, with only the Jubilee Road junction and lane narrowing creating additional delay. However, this is significantly lower than in the AM with around 3 minutes extra delay.
- 3.11.9. On the A6026, the Copley Lane junction is again a pinch point for westbound traffic but causes less than 2 minutes additional delay.
- 3.11.10. These areas on the A629 are shown in Figure 13 below.

Figure 13 - A629/A6026 Corridor Links Greater than 90% V/C, PM



3.11.11. Ainley Top in the PM peak has many links with high V/C, as demonstrated in Figure 14. Locations with significant increases in delay are:

- The westbound off slip from the M62 (3 minute delay increase).
- Blackley Road entry to the northern roundabout (1 ½ minute delay increase).
- Southern roundabout shows increased delay of 1-2 minutes for the eastern, southern and western arms and 3 minutes for the northern arm.

Figure 14 - Ainley Top Links Greater than 90% V/C, PM



- 3.11.12. The A629 corridor has been modelled with the earliest phases of the improvement scheme included. It can be seen that points of congestion remain which match with the future phases which are still in development. The scale of the additional delay predicted is generally of a level where it is expected that this could be addressed by the wider A629 scheme. Additionally there is a need to consider some intervention on the A6026.
- 3.11.13. The worsening of Ainley top, particularly at the access/egress point of the M62, strengthens the case for relief of this junction via the proposed junction 24a which is currently being studied separately to the local plan.

3.12 SOWERBY BRIDGE

- 3.12.1. Within the settlement of Sowerby Bridge, the key points of congestion, which are exacerbations of current issues, are located at:
- Wakefield Road (A6026)/Bolton Brow (A58).
 - Wharf Street (A58)/Tuel Lane (A6139).
 - A58/Station Road/Sowerby Street
- 3.12.2. The Wakefield Road and Bolton Brow arms do not see significant changes in delay despite the increase in maximum V/C of turning movements at this junction. The increase in V/C could likely be mitigated through signal optimisation.
- 3.12.3. The A58 at Tuel Lane is modelled with almost 4 minutes of additional delay in the eastbound direction due to the large increase in flow.
- 3.12.4. Increase in delay of over a minute is seen eastbound on Sowerby Street.
- 3.12.5. The congested links in Sowerby Bridge are shown in

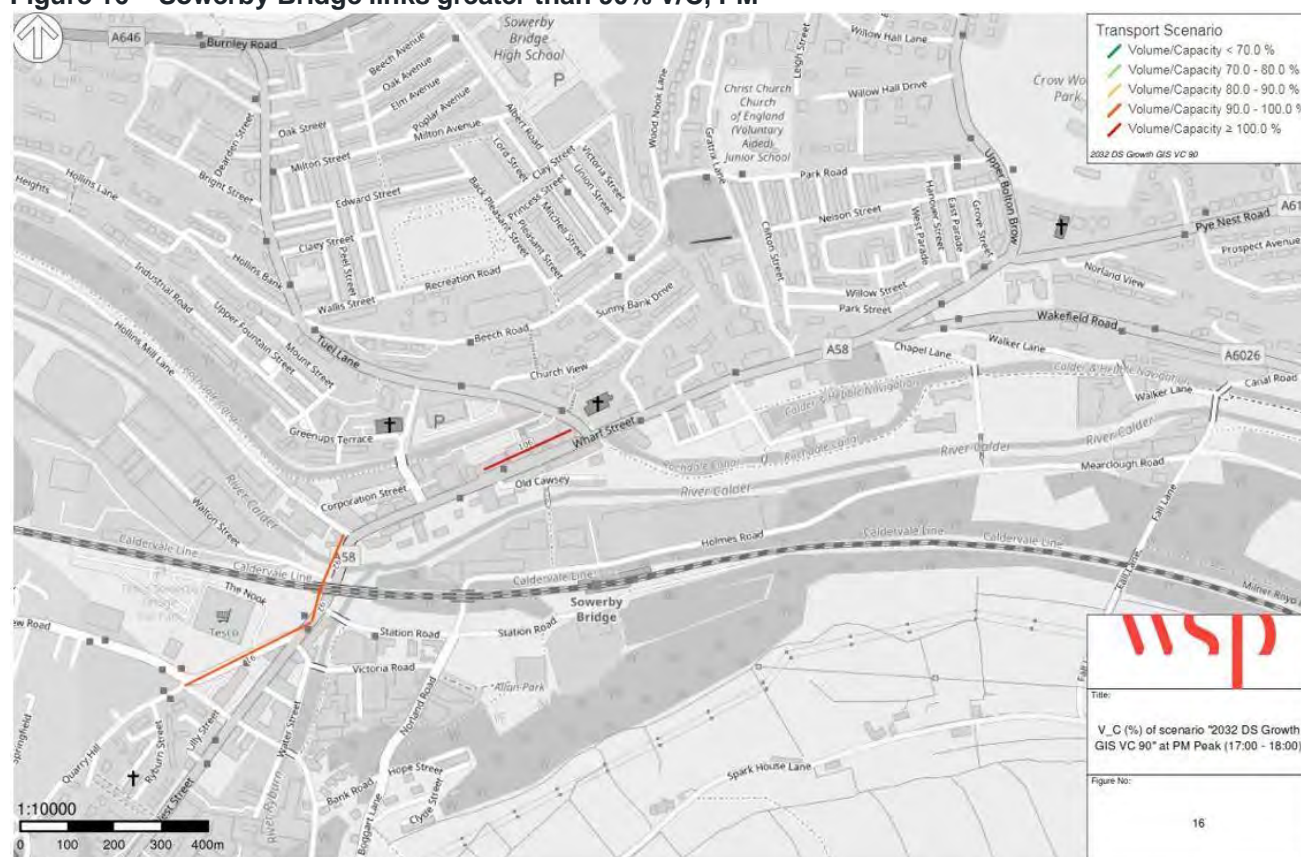
3.12.6. Figure 15.

Figure 15 – Sowerby Bridge links greater than 90% V/C, AM



- 3.12.7. Sowerby Bridge shows similar capacity constraints in the PM peak, with the Junctions of Tuel Lane and Wakefield Road on the A58 being the main locations of capacity constraint. The junction of Station Road/Sowerby Street performs better in the PM peak than in the AM with delay increasing by only 15 seconds in the westbound direction.
- 3.12.8. The following points of congestion are seen and shown in Figure 14 below:
- Wakefield Road (A6026)/Bolton Brow (A58)/Chapel Lane.
 - Wharf Street (A58)/Tuel Lane (A6139).
- 3.12.9. The A58 at Tuel Lane sees an increase in delay of approximately 2 minutes. Other points on the network see smaller increases in delay of less than 30 seconds.

Figure 16 – Sowerby Bridge links greater than 90% V/C, PM



- 3.12.10. Although there are currently no specific improvement schemes for the centre of Sowerby Bridge it is a potential area for improvement through the WY+TF Corridor Improvement Programme (CIP). The modelling shown above indicates that this should be aimed primarily at the Tuel Lane/A58 junction.

3.13 NORTH HALIFAX

- 3.13.1. The north of Halifax shows an increase in flow over the area, with the developments in Ovenden and Mixenden playing a large part in the increase in traffic heading southbound along the A629 towards Halifax Town Centre.
- 3.13.2. Although there is an increase in the traffic around Northern Halifax, the V/C's show relatively small changes, giving confidence that the network is performing similarly to the 2014 base, with few areas above this threshold:
- Shay Lane/Keighley Road (A629) sees a junction constraint with an increase of 20% Volume to Capacity ratio, due to the developments in Illingworth and this being the quickest route south to enable use of the A629. The A629 also shows a link capacity issue to the south of Shay Lane, however this is due to a simplification in the model coding at this point and therefore not expected in reality.
 - Brackenbed Lane/Pellon Lane shows capacity constraints at the junctions with Long Lane and Pellon New Road.
 - Ovenden Way/Ovenden Road (A629) shows a junction constraint for movements heading southbound onto the A629. However, the do something V/C is only just above practical capacity at 92%.
- 3.13.3. South of Shay Lane to the junction with Ovenden Way there is an increase in delay of around 80 seconds due to the traffic growth of the Local Plan.
- 3.13.4. The impact on delays northbound on Brackenbed Lane reduces slightly in the DS scenario, however the southbound delay increases by approximately 2 minutes due to capacity constraints at the junction with Pellon New Road. This level of worsening appears to be possible to mitigate through minor improvements.

- 3.13.5. Delay along Ovenden Way does not change significantly in the westbound direction in the AM. The eastbound movement shows an increase in delay of approximately ½ minute.
- 3.13.6. The locations in North Halifax that show significant congestion can be seen in Figure 17.

Figure 17 – North Halifax links greater than 90% V/C, AM



- 3.13.7. Similar to the AM, there is a general uplift in traffic using the A629 north of Halifax. Ovenden Way and Boothtown Road also see an uplift in general traffic usage.
- 3.13.8. Due to the traffic using the network to the north of Halifax, there are some overcapacity links as follows:
- Shay Lane/Keighley Road (A629) sees a junction constraint.
 - Brackenbed Lane/Pellon Lane shows capacity constraints at the junctions with Long Lane and Pellon New Road.
 - Shropps Road shows a link capacity constraint.
- 3.13.9. After analysis of the model performance, Shropps Road is not expected to be an issue and is a result of an overly low capacity which has been coded in the base year model.
- 3.13.10. Shay Lane sees an increase in delay of around 30 seconds. Brackenbed Lane sees increased delay in the region of 50 seconds. Pellon lane does not see a significant increase in delay.

See

Figure 18 below for the PM modelled congestion in North Halifax.

Figure 18 - North Halifax links greater than 90% V/C, PM



- 3.13.11. With the exception of Shay Lane, the model shows relatively minor impacts in terms of additional delay in this area. The A629 north of Halifax is included in the scope of the WY+TF CIP and this has the potential to improve the Shay Lane junction and mitigate this impact.

3.14 HEBDEN BRIDGE

- 3.14.1. Hebden Bridge and the wider Upper Valley experiences a modest increase in traffic on the A646 as very little development is proposed for this area of Calderdale. Over the modelled period of an hour there are no significant points of congestion shown except the junction between Heptonstall Road and the A646 which shows a turning V/C of 86%. This could easily be mitigated by optimising the signal timings at this junction. In reality there will be peaks of congestion over shorter timescales in the centres of Todmorden, Hebden Bridge and Mytholmroyd. These are expected to be addressed through the improvements planned for the A646 as part of the WY+TF corridor improvement programme.

4 SUMMARY

4.1 METHODOLOGY

- 4.1.1. The methodology outlined in Section 2 shows detailed information regarding the development sites used alongside other sources of information to give a representative sample of district-wide growth. This was a comprehensive scenario with all proposed allocation sites modelled within Calderdale within the simulation network. Therefore, all impacts can be quantified accordingly and proposals put forward for whether and how they could be addressed via specific interventions.
- 4.1.2. It should be again noted that the methodology used has taken a worst-case scenario approach. This means that current rates of high car dependency are expected to continue and possible modal shift or reductions in travel demand due to technological and social changes have not been assessed.

4.2 OUTPUTS

- 4.2.1. The outputs from this set of forecast models have quantified the impact of the Local Plan allocations in terms of the level of additional delays on the network.
- 4.2.2. In most cases the predicted level of additional delay at a point in the network is relatively minor (less than a minute). These are expected to be mitigated through relatively minor interventions to improve capacity if it is felt to be necessary, but in many cases the additional delay is likely to be acceptable.
- 4.2.3. Almost all areas have planned improvement schemes, even if they are at an early stage and the outputs of this work can be used to shape those that are less well defined. More significant impacts are seen in the east of the district where development pressure is greatest, but these typically manifest themselves in additional delays of a few minutes and therefore it is expected that they can be significantly mitigated by the scale of intervention that is likely to be acceptable in Calderdale.
- 4.2.4. Where significant planning and investment will be necessary – for example on the corridors of the A641 and A58 – it is recommended that consideration is made to the wording of policy to ensure that the level of development is phased in line with the delivery timescales for these interventions.

4.3 INTERVENTIONS

- 4.3.1. Following the assessment of the modelling of the cumulative impact and the subsequent stress on the network, a view on the broad form of infrastructure requirements has been taken. These interventions are required to mitigate the impacts of the growth in travel as a result of the Local Plan developments where this has been modelled to cause significant delays (typically more than 1 minute).
- 4.3.2. Table 9 below summarises the requirements and possible delivery mechanism for the various locations described in previous sections of the report.

Table 9 - Description of interventions necessary for mitigation of local plan impacts shown by modelling

LOCATION	INTERVENTION	POSSIBLE DELIVERY MECHANISM
Wyke Lion, Hipperholme cross roads, Stump Cross	Short term intervention to improve operation of signals at Hipperholme Cross Roads. Longer term need for A58 Corridor package of improvements across all modes of transport.	Developer Contributions. Possibility of a future West Yorkshire + Transport Fund (WY+TF) scheme.
A629 south of Halifax, Ainley Top	Phases 2-4 of WY+TF scheme Improvements to capacity of slip roads on/off the M62	Current scheme as part of WY+TF. Highways England.

LOCATION	INTERVENTION	POSSIBLE DELIVERY MECHANISM
Brighouse Town Centre	Master planning of garden suburb sites. A641 WY+TF scheme corridor improvements to remove through traffic.	Developer contributions. Current scheme as part of WY+TF.
West Vale (Elland)	Local traffic management. Part of A629 Phase 4.	Developer contributions. Current scheme as part of WY +TF.
Sowerby Bridge	Local traffic management as part of the A58/A672 corridor improvement programme.	Developer contributions. Current scheme as part of WY+TF
A6026	Local traffic management as part of the A6026 corridor improvement programme.	Developer contributions. Current scheme as part of WY+TF
A629 north of Halifax	Local traffic management. As part of the WY+TF corridor improvement programme	Developer contributions. Current scheme as part of WY+TF.

As well as the interventions recommended for mitigation of the most significant effects of the local plan growth, other schemes will also assist in supporting the local plan aspirations. These are shown in Table 10.

Table 10 - Description of interventions necessary to support the local plan

LOCATION	INTERVENTION	POSSIBLE DELIVERY MECHANISM
Halifax Town Centre	Phase 2 of A629 WY+TF scheme and Halifax Station Gateway	Current scheme as part of WY+TF.
Hebden Bridge/Mytholmroyd/Todmorden	Local traffic management as part of the A646 element of the WY+TF corridor improvement scheme.	Current scheme as part of WY+TF
Brighouse, Elland, Halifax, Todmorden, Mytholmroyd, Hebden Bridge, Sowerby Bridge,	Improved multi-modal access and parking at stations (current and proposed)	Current scheme as part of WY+TF WY+TF.
City Connect Phase 2 (Calderdale Canals)	Improvement of cycle routes on the Rochdale canal and Calder Hebble navigation.	City Connect (DfT)

- 4.3.3. The current modelling has not assumed any impact from the provision of public transport improvements for example the provision of a new rail station at Elland. These interventions will also form part of the mitigation of the Local Plan in terms of transport demand.

Appendix A

LOG OF CALDERDALE RESIDENTIAL

SITES MODELLED



Appendix A - Table 1 – Calderdale residential developments, including completed sites and residential portion of mixed-use

Orange sites now discounted from Local Plan, Yellow sites included.

LP_Ref	Property_Name	Road_Street	Locality	Town_Constituency	Total Area	Easting	Northing	2014_to_2032	Status	Likely final year for build out
6	Land at 164	Huddersfield Road and Toothill Lane	Rastrick	Brighouse	0.2800	414462	421150	10	Potential	#N/A
11	Tenterfields	Burnley Road	Luddenden Foot	Halifax	2.1000	404199	424221	63	Potential	7
17	Peakstones Farm	Soaper Lane	Shelf	Halifax	3.6800	412665	429494	110	Potential	#N/A
26	The Gate Farm	Saddleworth Road	Greetland	Elland	2.2300	407821	421053	67	Potential	#N/A
37	Long Heys Farm	Long Heys	Greetland	Elland	0.8400	409139	420605	30	Potential	10
44	Cemetery Lane	Lower Bentley Royd		Sowerby Bridge	2.9400	405098	423487	112	Potential	8
46	Goosegate Farm	Heathy Lane	Holmfield	Halifax	0.6900	407807	428552	25	Potential	6
53	Land off Key Syke Lane	Kilnhurst		Todmorden	0.2900	394322	424059	13	Potential	11
65	Land north-west	Nab End Lane	West Vale	Elland	1.0100	409731	421037	36	Potential	14
70	Land south east of	204 Moor End Road		Halifax.	0.2763	406694	426211	16	Under Construction	N/A
75	Land at Laithe Croft Farm	Bowling Green Road	Stainland	Elland	0.3200	407642	419220	11	Potential	5
103	Land at	Horley Green Road	Claremount	Halifax	1.2500	410025	425784	56	Potential	4
143	Adjacent	Earl Terrace	Ovenden	Halifax.	0.0479	408343	426747	3	Built	N/A
146	Land to the west of West View	Church Lane	Stainland	Elland	0.8600	408181	419778	31	Potential	15
164	Site of High Level Works	Pellon Lane	Pellon	Halifax	0.3800	407865	425891	34	Potential	3
174	End of	Wilton Street		Brighouse	2.6300	413661	423455	79	Potential	6
177	Land adjacent Ellistones Place	Saddleworth Road	Greetland	Elland	6.0300	408707	420894	181	Potential	#N/A
181	Ringby Farm	7 Ringby	Boothtown	Halifax.	0.0987	408645	427563	3	Under Construction	N/A
185	Land at Bottomley Road	Bottomley Road	Walsden	Todmorden.	0.0398	394082	420890	1	Built	N/A
191	Adelaide Joinery Works	Saddleworth Road	Greetland	Halifax.	0.0543	409759	421124	7	Built	N/A
194	Land at Victoria Terrace	Burnley Road	Luddenden Foot	Halifax	0.5200	404006	424358	19	Potential	#N/A

211		39a Claremount Road		Halifax.	0.0071	408951	426794	1	Built	N/A
220	Land off	Lower Edge Road		Elland	6.8900	412175	421086	207	Potential	5
221	Land at	Spring Head	Northowram	Halifax	1.2700	410991	426516	46	Potential	4
234	Swinton	Hays Lane	Mixenden	Halifax	2.5100	406344	429119	93	Potential	4
238	Land at rear of former St Bernadettes Church	Clough Lane	Mixenden	Halifax	0.3100	406207	428731	12	Potential	15
242	Land opposite 109-119	Mixenden Road	Mixenden	Halifax	0.4000	406178	428372	14	Potential	15
248	Land off	Beechwood Road	Illingworth	Halifax	0.2500	407743	427985	10	Potential	5
253	Junction of Grosvenor Place	Burnley Road	Luddenden Foot	Halifax	0.2800	403718	425167	11	Potential	11
261	Land at	Turner Avenue South	Ovenden	Halifax	2.6900	407025	427697	91	Potential	4
264	Car Park Between	Well Lane / King Street		Halifax	0.3900	409709	425334	10	Potential	11
287	Land rear of 287	Willowfield Road		Halifax	0.7300	406672	424486	8	Potential	2
289	Land off	King Cross Street		Halifax	0.4500	408935	424976	10	Potential	5
338	Land adjacent Whinney Hill Park	Whinney Hill		Brighouse	0.6000	414621	424254	22	Potential	5
353	Land to the rear 109	Fairfax Crescent	Southowram	Halifax	0.3300	411383	423927	9	Potential	4
369	Rear gardens of	293 to 295 Willowfield Road		Halifax.	0.1993	406606	424556	4	Under Construction	N/A
379	Land junction of Timmey Lane and	Burnley Road		Sowerby Bridge.	1.3004	405369	424136	44	Under Construction	N/A
397	Land adjacent to Daisy Bank		Savile Park	Halifax	0.5100	408796	424258	10	Potential	5
400	Land off	Birdcage Lane	Savile Park	Halifax	0.3100	408600	423288	6	Potential	5
406	Land off	Mile Cross Road/Westbury Place		Halifax	0.3200	407244	424845	13	Potential	5
407	Spring Hall Mills	Mile Cross Road		Halifax	0.4700	407195	424952	16	Potential	12
417	Land at	Windle Royd Lane/Stocks Lane	Warley	Halifax	1.3200	406564	425063	48	Potential	4
435	Land off	Haugh End Lane	Sowerby	Sowerby Bridge	0.3000	405269	422976	14	Potential	5
438	Land off	Dean Lane	Sowerby	Sowerby Bridge	0.3700	404176	422824	13	Potential	5
452	Land at Ovenden Green		Ovenden	Halifax	2.4400	408077	426567	98	Potential	6
454	Land off	Wheatley Road	Lee Mount	Halifax	0.6800	407843	426429	20	Potential	5
469	Fieldhouse	Haugh Shaw Road		Halifax.	0.5583	408474	424487	6	Built	N/A

478	Hartwell Ford garage	Skircoat Road		Halifax	0.2800	409264	424475	11	Potential	4
523	Land at	Furness Avenue	Illingworth	Halifax	3.3400	406979	427994	100	Potential	4
531	Land off Whitehill Road	Keighley Road	Illingworth	Halifax	4.3300	407272	428224	130	Potential	10
538	Land off	Brookfoot Lane		Brighouse	0.6000	413196	423426	22	Potential	5
546	Land at Hullen Edge Hall	Hullen Edge Lane		Elland.	0.1106	409667	420633	1	Built	N/A
565	Land at	Bowling Alley/Scholey Avenue	Rastrick	Brighouse	0.2800	414175	421590	10	Potential	4
568	Land south of Clough Lane	Rear of New Hey Road	Rastrick	Brighouse	2.3600	413386	420557	83	Potential	5
569		15 Clay House Lane	Greetland	Halifax.	0.2221	409522	421507	4	Built	N/A
571	Site to the rear of 9A	Birds Royd Lane		Brighouse	0.2800	414729	422525	100	Potential	4
579	126- 128	Bradford Road		Brighouse	0.4200	414616	423634	60	Potential	14
580	Victoria Street	Greetland		Halifax.	0.0310	409595	421106	3	Built	N/A
589	Land Adjacent to & Rear of 8 Back Clough		Northowram	Halifax	0.3700	411450	426846	15	Potential	4
613	Land Adjoining Stubbings	Rochdale Road	Ripponden	Sowerby Bridge	0.5100	403675	419622	18	Potential	#N/A
627	Garden & land south of The Willows	Green Lane	Shelf	Halifax.	0.4332	412902	428564	12	Built	N/A
635	Land off	Fir Street	Walsden	Todmorden	0.8300	393197	421529	37	Potential	5
640	Land off The Hollins,	Stansfield Hall Road		Todmorden	1.1600	393904	424796	52	Potential	5
651	Land off	Stoney Royd Lane		Todmorden	1.7900	392764	425396	64	Potential	5
658	Cinderhill Mills	Halifax Road		Todmorden	0.4700	395212	424626	24	Potential	14
659	Land rear of 302	Halifax Road		Todmorden	0.4700	395031	424506	17	Potential	13
683	Land at	Bank Top/Common Lane		Halifax	0.3200	410644	424391	12	Potential	4
726		57 Tual Lane		Sowerby Bridge.	0.0183	405848	423803	2	Built	N/A
732	Tubend Works	Stanley Street		Sowerby Bridge.	0.0100	406333	423682	2	Built	N/A
736		10 Town Hall Street		Sowerby Bridge.	0.0065	405929	423546	2	Built	N/A
745	Former Barclays Bank	21 to 23 Town Hall Street		Sowerby Bridge.	0.0152	405972	423596	4	Built	N/A
749	Stoney Royd Mill Albion Mills	Bailey Hall Road		Halifax	1.5100	409863	424998	79	Potential	12

759	Land off	Belle Vue Rise	Shelf	Halifax	0.2700	411731	428393	10	Potential	5
766	Land Off	Hall Lane	Northowram	Halifax	3.0900	410912	427503	93	Potential	5
771	Firth's Carpets	432 Bradford Road	Bailliff Bridge	Brighouse	0.5900	414908	425243	30	Potential	4
773	Land Adjacent	Green Lane	Illingworth	Halifax	3.6300	407580	429605	109	Potential	4
782	Land off	Cockhill Lane	Shelf	Halifax	5.5000	411716	428652	165	Potential	5
783	2 Rushworth Street and	16 to 18 Wheatley Lane	Lee Mount	Halifax.	0.0172	408332	426443	5	Built	N/A
786	Ovenden Estate Office	213 Ovenden Way	Ovenden	Halifax.	0.0485	407503	426912	2	Built	N/A
814	Land at Richmond Street	Stannary Place		Halifax	0.6700	408887	425597	30	Potential	5
815	Works Depot	Stannary Place		Halifax	1.6100	408845	425657	72	Potential	6
825	Land between	Greetland Road and Saddleworth Road	Barkisland	Sowerby Bridge	0.9800	405797	420249	31	Potential	7
831		32 Bell Hall Terrace		Halifax.	0.0043	408473	424084	1	Built	N/A
842	Basement & Second Floor	Selby Lawn	7 Savile Park	Halifax.	0.0149	408538	424056	2	Built	N/A
846	The Bramble Inn	Field Lane	Rastrick	Brighouse	0.3000	413584	421722	12	Potential	11
856	Empire Business Centre	Church Street		Halifax.	0.0469	409628	424885	11	Built	N/A
856	Land off	West Lane	Southowram	Halifax	4.0700	411070	423466	122	Potential	5
863	Exley Hall Farm	1 Upper Exley	Exley Lane	Halifax.	0.1767	410126	422082	3	Built	N/A
893	Boothroyd Farm	Boothroyd Lane	Rastrick	Brighouse	10.5200	413035	421842	200	Potential	#N/A
901	Land off	Woodlands Avenue		Todmorden	0.7300	393955	424630	33	Potential	5
914	Land Opposite 46-48	Hollins Road	Walsden	Todmorden	1.0300	393184	422460	46	Potential	6
922	Former Hebden Bridge Fire Station	Valley Road		Hebden Bridge	0.3700	399268	427432	11	Potential	8
938	Holme House	Holme House Lane	Rishworth	Sowerby Bridge	0.2700	403484	418586	11	Potential	9
939	Land off	Oldham Road	Ripponden	Sowerby Bridge	0.4300	403486	418447	15	Potential	5
941	Land adjacent	4 Wakefield Gate		Halifax.	0.3654	407933	423935	4	Under Construction	N/A
945	Pond Quarry	Lightcliffe Road		Brighouse	1.8200	414074	423953	66	Potential	11
949	Carr House Farm		Shelf	Halifax	3.9400	412984	428871	118	Potential	#N/A
950	Beacon Lodge Quarry	Long Lane		Halifax	1.8000	410446	424742	54	Potential	10

952	Land at New Gate Farm	Saddleworth Road	Greetland	Elland	5.7500	407967	420816	172	Potential	#N/A
959	Land off	Blackley Road	Blackley	Elland	2.6600	410132	420184	80	Potential	5
964	Land off	Rochdale Road	West Vale	Elland	0.5000	409399	421289	14	Potential	5
968	Land at West End Golf Club	Paddock Lane	Highroad Well	Halifax	2.7100	406574	425584	81	Potential	6
978	Land off	Lower Edge Road/Shaw Lane		Elland	8.2800	412036	421508	248	Potential	5
979	Land off	Hammerstone Leach Lane	Blackley	Elland	5.6200	409832	420240	169	Potential	5
982	Land off	Stainland Road and Burrwood Way	Holywell Green	Elland	1.2000	408893	420184	36	Potential	5
983	Land at	Maltings Road	Wheatley	Halifax	0.9100	406636	426866	30	Potential	4
987	White House	Walt Royd	Wheatley	Halifax	1.1600	406841	427449	42	Potential	#N/A
988	White House	12 Walt Royd	Wheatley	Halifax	0.7800	406759	427392	28	Potential	#N/A
990	Land off	Denfield Lane	Wheatley	Halifax	0.8500	407274	426915	31	Potential	5
993	Land off	Fore Lane Avenue	Sowerby	Sowerby Bridge	0.7900	405208	423372	36	Potential	5
1000	Land off	Woodhouse Lane	Rastrick	Brighouse	0.5300	415187	421952	24	Potential	5
1004	Land off	Burnley Road	Warley	Halifax	0.7100	406273	424770	26	Potential	5
1009	Site of demolished School	Clough Lane / Brow Bottom Lane	Mixenden	Halifax	1.5200	405875	428441	55	Potential	6
1016	Land adjacent to	St Johns Cross Farm	Bradshaw	Halifax	4.3800	408273	429679	131	Potential	#N/A
1017	Land off	School Lane	Bradshaw	Halifax	12.5500	408086	429423	452	Potential	5
1019	Land adjacent to White House Farm	Riley Lane	Holmfield	Halifax	1.0900	408149	429130	39	Potential	5
1023	Land off	Halifax Road	Triangle	Sowerby Bridge	1.0600	404209	421311	17	Potential	5
1027	Land North of	Stonelea	Barkisland	Sowerby Bridge	0.3300	405395	420147	12	Potential	11
1028	Land between Greetland Road	Scammonden Road and Saddleworth Road	Barkisland	Sowerby Bridge	4.6700	405521	420253	121	Potential	#N/A
1030	Land adjoining South Parade	Adj Maple Fold		Elland	0.3800	410262	420231	14	Potential	8
1032	Southages Quarry	Ogden Lane & Toothill Bank	Rastrick	Brighouse	1.0500	413987	421547	42	Potential	9
1033	Land off	Toothill Bank	Rastrick	Brighouse	2.5600	413889	421361	77	Potential	5

1034	Land off Soaper Lane		Shelf	Halifax	1.9700	412581	429215	71	Potential	#N/A
1035	Land at	30 Burned Road	Shelf	Halifax	0.9500	412637	429191	34	Potential	4
1036	Tennis Courts adjacent	19 Salisbury Terrace	Akroydon	Halifax.	0.0533	408908	426461	4	Built	N/A
1036	Land north of Shelf Cricket Ground	Carr House Lane	Shelf	Halifax	0.8900	412732	429098	27	Potential	#N/A
1037	Land off	Burned Road	Shelf	Halifax	0.9500	412497	429085	32	Potential	5
1041	Land at	West Street & Halifax Road	Shelf	Halifax	0.5600	411897	428032	20	Potential	4
1044	Hud Hill Farm		Northowram	Halifax	1.5100	411515	428040	45	Potential	#N/A
1046	Land adjacent 44	Northowram Green	Northowram	Halifax	1.1900	411332	427675	43	Potential	#N/A
1047	18 Yarborough Croft		Northowram	Halifax	0.3300	411399	427589	13	Potential	#N/A
1049	Scrap Yard at Southedge and Southedge Cottage	Brighouse Road	Hipperholme	Halifax.	0.6340	412434	425130	22	Built	N/A
1053	Squire Hill Quarry			Brighouse	2.2600	413421	423161	68	Potential	13
1054	Land off	Brookfoot Lane		Brighouse	0.9000	413489	423246	32	Potential	5
1059		32 Crown Street		Halifax.	0.0052	409239	425231	2	Built	N/A
1060	Land at	Shirley Grove	Lightcliffe	Brighouse	0.6400	414275	425094	23	Potential	4
1062	Builders Yard	Mount Lane	Rastrick	Brighouse.	0.0470	413322	420976	2	Built	N/A
1065	Land adjacent Turners Farm	Keighley Road	Illingworth	Halifax.	0.0245	407126	429156	1	Built	N/A
1077	Southedge Quarry	Brighouse Road	Hipperholme	Brighouse	7.1900	412350	425089	216	Potential	9
1078	Land between	Dewsbury Road and New Hey Road	Rastrick	Brighouse	5.1700	413023	420974	150	Potential	7
1081	Bolton Brow Methodist Church	Bolton Brow		Sowerby Bridge.	0.1644	406536	423775	23	Built	N/A
1088	West Vale Works	Stainland Road, West Vale	Greetland	Elland	0.4700	409491	421077	14	Potential	4
1093	Former Hill Crest Quarry	Halifax Road	Hove Edge	Brighouse	0.9600	413221	424106	35	Potential	8
1095		Halifax Road	Hove Edge	Brighouse	4.0500	413404	423975	150	Potential	6
1101	Land at Score Hill		Shelf	Halifax	1.0900	411644	427848	20	Potential	#N/A
1103	Garden of	22 Church Lane		Elland.	0.0544	412687	421280	2	Built	N/A
1116		Brighouse Road	Hipperholme	Brighouse	1.0400	412540	425209	50	Potential	3
1123		Kinnaird Close		Elland	1.6500	410900	421928	74	Potential	14

1128	Land off Park Lane		Siddal	Halifax	1.0600	410238	422810	38	Potential	#N/A
1137	Horley Green Works	Horley Green Road	Claremount	Halifax	0.6600	410079	426068	21	Potential	14
1162	Stables at Hoyle Green House	Hoyle Green	Warley	Halifax.	0.0044	405591	424585	1	Built	N/A
1170		Mulcture Hall Road		Halifax	2.4800	409795	425381	40	Potential	#N/A
1180	Old Lane Dyeworks	Old Lane		Halifax	1.5000	408516	426461	64	Potential	15
1188	Land between	Law Lane and Fairfax Crescent	Southowram	Halifax	0.7500	411260	423907	27	Potential	7
1193	Brian Royd	Brian Royd Lane	Greetland	Halifax.	0.0059	407954	421224	1	Built	N/A
1194	Barn Cottage	5 Lower Exley	Siddal	Halifax	0.9000	410000	422534	32	Potential	4
1196	Land off	Park Lane	Siddal	Halifax	0.5600	410159	422640	20	Potential	5
1197		Park Lane	Siddal	Halifax	1.1200	410073	422627	40	Potential	13
1215	Land adjacent	Boothtown Road	Boothtown	Halifax	0.2700	408824	427047	11	Potential	4
1216	Land off	Mill Lane and Old Lane	Boothtown	Halifax	6.5300	408641	426966	196	Potential	5
1224	Land North of Meadowcroft Lane	Halifax Road	Ripponden	Sowerby Bridge	1.1800	404334	420288	30	Potential	3
1229		Near Royd	Ovenden	Halifax	15.7300	408438	427337	472	Potential	14
1280		Daisy Road		Brighouse.	0.0364	414858	421983	1	Built	N/A
1283	Glenholme	Green Lane	Greetland	Halifax	0.3100	409360	420873	11	Potential	15
1287	Northgate House / Central Library	Northgate		Halifax	0.9200	409453	425307	40	Potential	12
1292	Cow Green Car Park			Halifax	0.3400	409074	425166	141	Potential	7
1309	Lillands Works	Lillands Lane		Brighouse.	0.1486	414011	422577	8	Built	N/A
1322	George Street		Rastrick	Brighouse	0.4700	414322	422482	65	Potential	3
1356	Hollins Park	Cemetery Lane		Sowerby Bridge	1.2000	405219	423794	54	Potential	4
1368	Furness Drive/Turner Avenue South		Illingworth	Halifax	0.2600	406999	427742	9	Potential	6
1372	Kershaw Drive		Luddenden Foot	Halifax	3.2300	403784	425690	84	Potential	#N/A
1379	Heathmoor Park Road/Field Head Lane		Illingworth	Halifax	1.1300	406815	429123	41	Potential	4
1391	Upper Bentley Royd			Sowerby Bridge	0.4000	405430	423319	20	Potential	5
1398	Land on the West Side of Brockwell Lane		Triangle	Sowerby Bridge	2.9000	404758	422813	87	Potential	8
1407	Land Off	Scar Bottom Lane	Greetland	Elland	0.4400	407811	421187	16	Potential	5

1409	Wood Lane	Off Ovenden Wood Road	Wheatley	Halifax	4.1400	406912	426587	124	Potential	#N/A
1412	Land North of	Lower Brockwell Lane		Sowerby Bridge	0.2800	404879	422768	8	Potential	11
1415		Wakefield Road		Sowerby Bridge	0.2500	406871	423801	12	Potential	5
1423	Cecil Avenue	Lightcliffe		Halifax.	0.1356	413393	425701	1	Built	N/A
1425	Land South of	Phoebe Lane	Siddal	Halifax	2.2900	410161	423636	105	Potential	5
1429	Former St Catherines High School	Holdsworth Road	Holmfild	Halifax	2.8400	408252	428829	85	Potential	8
1431	Former Mayfield Garage	Queens Road	King Cross	Halifax	0.8700	407891	424672	17	Potential	14
1451	Land between	Bradley Wood and Woodhouse Lane	Rastrick	Brighouse	57.1500	415241	421333	1257	Potential	7
1453	Land Off	Lillands Lane	Rastrick	Brighouse	5.9000	413513	422316	177	Potential	5
1463	Land between	Highmoor Lane and Bradford Road		Brighouse	111.0200	415493	423707	1998	Potential	7
1469	Land at Stoney Hill	Lillands Lane		Brighouse	0.4400	414072	422540	20	Potential	5
1470	Land behind	West View	Stainland	Elland	3.9600	408356	419973	119	Potential	#N/A
1472	Land west of	Ridge Hill		Brighouse	2.4200	413287	422088	73	Potential	#N/A
1481	Former St Catherines High School	Holdsworth Road		Halifax	0.8900	408316	428759	32	Potential	8
1486	Land off	Hambleton Drive	Mixenden	Halifax	0.7600	405607	428520	27	Potential	5
1487	Land off	Balkram Road	Mixenden	Halifax	0.3400	405570	428428	14	Potential	5
1488	Land off	Hambleton Crescent	Mixenden	Halifax	0.2700	405619	428405	11	Potential	5
1489	Land south of	Hambleton Crescent	Mixenden	Halifax	0.3500	405625	428344	14	Potential	5
1501	Land east of	Manor Drive		Hebden Bridge	0.6500	400007	427378	29	Potential	9
1503	Land at	Stoney Lane		Hebden Bridge	0.4400	398798	427265	30	Potential	4
1519	Land North of Burnley Road	Twine Lane	Mytholmroyd	Hebden Bridge	2.4700	402214	426186	74	Potential	#N/A
1523	Land at	Westercroft Lane	Northowram	Halifax	1.4200	411722	427124	51	Potential	4
1534	Birks Mill	Birks Lane	Walsden	Todmorden	0.4000	393574	421901	18	Potential	10
1543	Land North and North West of	Wade House Road	Shelf	Halifax	10.9900	412040	428756	330	Potential	14
1544	Gully House	Stansfield Hall Road		Todmorden	0.4300	394184	424600	19	Potential	#N/A

1545	Green Lane Farm	Soaper Lane		Halifax	1.7400	412650	429322	50	Potential	#N/A
1547	Land at	Abbey Park	Illingworth	Halifax	2.5000	406949	429013	75	Potential	4
1567	Land adjacent to Exley Lane, North of Elland			Elland	15.8800	410603	421792	445	Potential	#N/A
1570	Land adjacent to	Moor End Road and Clough Lane	Mixenden	Halifax	1.4500	405555	428191	52	Potential	#N/A
1571	The Slaughterhouse	Giles Hill Lane	Shelf	Halifax.	0.4816	411596	429521	11	Built	N/A
1583	Land at Soaper Lane		Shelf	Halifax	9.4100	412392	429405	282	Potential	#N/A
1602	Barkisland Cross	Jackson Lane	Barkisland	0	0.7600	405061	420061	24	Potential	#N/A
1603	Land rear of 115	Claremount Road		Halifax	0.4500	409139	426730	16	Potential	5
1609	Land at	Titan Works, Claremount Road	Boothtown	Halifax	0.9800	409005	426806	49	Potential	4
1616	Land at Ainley Top	South West of the Junction of the A643/New Hey Rd	Ainley Top	Elland	1.6000	411904	419530	48	Potential	#N/A
1617	Land rear of Glenden	Halifax Road	Shelf	Halifax	0.7600	412103	428032	27	Potential	#N/A
1625	Land to the west of	Silverdale Terrace	Greetland	Elland	1.0100	408273	420912	30	Potential	#N/A
1627	Outbuildings at Ing Royd	Broomfield Avenue		Halifax.	0.0452	408519	423232	6	Built	N/A
1632		New Road		Halifax	1.5600	409539	424893	47	Potential	#N/A
1637	Land in front of	Bardnor House		Todmorden	0.5500	394216	424643	25	Potential	15
1642	West Scusby Farm	Pavement Lane	Illingworth	Halifax	2.2200	407448	429687	67	Potential	#N/A
1648	The Old Coach House	Oak Street		Elland.	0.0177	410927	420862	6	Built	N/A
1648	Land north of	Crosslee, Brighouse Road	Hipperholme	Brighouse	0.8400	412763	425137	30	Potential	11
1654	Politt Fields	8 Ripon House		Sowerby Bridge	1.5100	406139	423774	44	Potential	4
1655	Rawson Wood	Wood Croft	Sowerby	Sowerby Bridge	0.8400	404076	422926	15	Potential	3
1657	Land at	Whitwell Green Lane		Elland	0.7600	411662	421007	34	Potential	4
1663	Garden of Little Selborne	Bracken Road		Brighouse.	0.1011	414477	423992	2	Built	N/A
1723	Barn at Firth House Farm	Firth House Lane		Brighouse.	0.0951	415263	421377	1	Built	N/A
1738	Site of former Moorend Mills	Clough Lane	Mixenden	Halifax.	0.5518	405532	428296	37	Built	N/A
1755	Friendly Snooker Club	Burnley Road		Sowerby Bridge.	0.2183	405748	424198	6	Under Construction	N/A

1760	Land rear of Stradbrooke Lodge	Burnley Road		Sowerby Bridge.	0.0550	406212	424635	4	Built	N/A
1765	Builders yard	Dundas Street		Halifax.	0.1366	407817	424384	12	Under Construction	N/A
1794	Garden of	19 Moorlands Crescent	Ovenden	Halifax.	0.0480	407341	427041	2	Built	N/A
1800	Belmont Bakery	27 Belmont Place		Halifax.	0.0316	408128	424573	2	Under Construction	N/A
1834	Rear of 1 Old School House	St Peters Avenue		Sowerby Bridge.	0.0067	404646	423043	1	Built	N/A
1879	Land to south of Bankfield	140 Saddleworth Road	Greetland	Halifax.	0.1928	409276	421129	4	Built	N/A
1937	Plumbers Depot	2 Woodland Road		Halifax.	0.0340	409037	426416	4	Built	N/A
1952	Land adjacent	229 Wakefield Road	Lightcliffe	Halifax.	0.4485	414364	425342	10	Built	N/A
1967	Former Fountain Head Brewery	Ovenden Wood Road		Halifax.	9.3688	406441	426705	285	Under Construction	N/A
1974	Barn adjacent	20 Northgate		Elland.	0.0239	410746	421218	1	Built	N/A
1975	Land adjacent South Lane Farm	South Lane	Shelf	Halifax.	0.2403	412123	429094	8	Under Construction	N/A
2025	Land at	Dearnleys Yard		Sowerby Bridge.	0.0656	406840	423810	9	Built	N/A
2046	Land rear of	254 Thornhill Road	Rastrick	Brighouse.	0.1075	413845	421714	1	Built	N/A
2120	Land adjacent Cobblestones	Hoults Lane	Greetland	Halifax.	0.0296	408838	421628	1	Built	N/A
2148		38 Thornhill Road	Rastrick	Brighouse.	0.0746	414087	422262	4	Built	N/A
2153	Little Haven	200 Smith House Lane	Lightcliffe	Halifax.	0.2367	414538	424898	4	Under Construction	N/A
2157	Land at Brook Farm	Cooper Lane	Shelf	Halifax.	0.1485	412840	429287	3	Built	N/A
2205	Barn adjacent 6 Lower Smithy	Smithy Lane	Colden	Hebden Bridge.	0.0369	396225	428373	1	Built	N/A
2216		1 Albert Street and 72 Burnley Road		Todmorden.	0.0146	393473	424641	4	Built	N/A
2225		10 Walsden Street	Walsden	Todmorden.	0.0036	393241	422243	1	Built	N/A
2539	Lench House	Long Causeway	Rishworth	Sowerby Bridge.	0.3524	400907	417847	1	Built	N/A
2670	Barn and Cottages at Stannery End	Stannery End Lane	Cragg Vale	Hebden Bridge.	0.0735	401665	424999	2	Built	N/A
2717	Land adjacent	Parkside Road	Cornholme	Todmorden.	1.1268	390523	426405	24	Under Construction	N/A
2861	Land rear of Trinity Methodist Church	Inchfield Road	Walsden	Todmorden.	0.5326	393391	421971	16	Built	N/A
2923	Adjacent Lower Swift Place	Bar Lane	Ripponden	Sowerby Bridge.	0.1239	402827	418626	2	Under Construction	N/A

2930	Adjacent Lower Swift Place	Bar Lane	Ripponden	Sowerby Bridge.	0.0850	402878	418607	2	Built	N/A
2934	Land between	119 & 123 Rochdale Road	Ripponden	Sowerby Bridge.	1.2649	403362	419165	31	Under Construction	N/A
2974	Land west of	Caldene Avenue	Mytholmroyd	Hebden Bridge.	0.8287	400534	426341	9	Built	N/A
3000	Land off	Oakville Road		Hebden Bridge.	0.1632	398065	427013	8	Built	N/A
3074	Garden south of	3 Towngate	Southowram	Halifax.	0.0605	411246	423592	1	Built	N/A
3075	Land adjacent Monteverti	South View	Southowram	Halifax.	0.0653	411282	423501	1	Built	N/A
3149	Garden of	2 Sunwood Avenue	Shelf	Halifax.	0.0319	411922	427850	1	Built	N/A
3160		467 to 475 Elland Road		Elland.	0.2300	412119	422440	10	Under Construction	N/A
3173	Helliwell Syke	30 Syke Lane	Lightcliffe	Halifax.	0.0470	413299	425982	1	Built	N/A
3185	Land at Rochdale Road	Stead Lane and Dyson Lane	Ripponden	Sowerby Bridge.	7.2048	403164	418883	184	Built	N/A
3216	Holme House Nursing Home	Holme Street		Hebden Bridge.	0.0747	399192	427162	2	Built	N/A
3331	Railway Hotel	408 Burnley Road		Todmorden.	0.0406	392065	425662	5	Built	N/A
3366	Land adjacent Oak Bank	Excelsior Close	Ripponden	Sowerby Bridge.	0.2293	403418	419062	4	Built	N/A
3376	Site of Alexandra Mill	Burnley Road	Mytholmroyd	Hebden Bridge.	0.1526	400749	426364	10	Built	N/A
3379	Brearley House	Brearley	Luddenden Foot	Halifax.	1.0689	402756	426106	4	Built	N/A
3459	Land adjacent To The Barn	Top O' Th' Hill Road		Todmorden.	0.1724	393332	422384	1	Built	N/A
3466	Old Riding Farm	Old Riding Lane	Mount Tabor Luddenden Foot	Halifax.	0.0822	404641	427197	1	Built	N/A
3518	Brearley Chapel	Brearley Lane	Luddenden Foot	Halifax.	0.0442	402511	425913	5	Built	N/A
3520	Barn adjacent	7 Spark House Lane	Norland	Sowerby Bridge.	0.0659	406287	423209	1	Built	N/A
3530	Land off	Upper Lane	Northowram	Halifax.	0.2115	411094	426850	3	Built	N/A
3537	Barn at Nab Farm	Stainland Dean	Stainland	Halifax.	0.0125	406484	418187	1	Built	N/A
3551	Site of	73 to 79 Hollins Road	Walsden	Todmorden.	0.0863	393242	422519	6	Built	N/A
3564	Upper Spring Farm, Cold Edge	Withens Road	Wainstalls	Halifax.	0.0198	404753	429847	1	Built	N/A
3582		3 to 5 Bond Street		Todmorden.	0.0238	393736	424110	7	Built	N/A
3583	Garden adjacent	37 Newlands Crescent	Northowram	Halifax.	0.0178	411482	427347	1	Built	N/A
3619	Land adjacent Delph Hall	Burnley Road	Luddenden Foot	Halifax.	0.1007	403665	425243	5	Built	N/A

3639	Heath Hall Farm	Clough Road	Norland	Sowerby Bridge.	0.0047	406679	422566	1	Built	N/A
3663	Farm Buildings at Upper Wynteredge Farm	Northedge Lane	Hipperholme	Halifax.	0.1798	412672	426562	1	Built	N/A
3664	Land between	120 to 124 Lindley Moor Road	Ainley Top	Elland.	0.0317	410997	419221	1	Built	N/A
3667	Outbuildings at Whinney Royd Farm	Whinney Royd Lane	Northowram	Halifax.	0.0393	411236	428200	1	Built	N/A
3672	London Springs Farm	London Spring Road	Ripponden	Sowerby Bridge.	0.1500	402328	419576	4	Built	N/A
3692	Marsh Hall	Lands Head Lane	Northowram	Halifax.	0.0575	410801	427834	2	Built	N/A
3697	Barn at Croft House Farm	Withens End Lane	Rishworth	Sowerby Bridge.	0.1075	404210	417158	2	Built	N/A
3721	Raw End Farm Barn	Raw End Road	Warley	Halifax.	0.1243	404956	425951	2	Built	N/A
3723	Derdale Mill	Derdale Street		Todmorden.	0.8396	394288	424142	34	Under Construction	N/A
3761	North Midgelden Barn	Bacup Road		Todmorden.	0.0694	390600	424029	1	Built	N/A
3779	Thorn Bank	New Road	Luddenden	Halifax.	0.4124	403929	426166	3	Built	N/A
3780	Land at junction of Tetley Lane and	Upper Lane	Northowram	Halifax.	0.1376	411113	427051	7	Built	N/A
3786	Land rear of	5 Sunwood Avenue	Shelf	Halifax.	0.1769	411989	427893	2	Built	N/A
3800	Stones Mill Garage	Bar Lane	Ripponden	Sowerby Bridge.	0.0488	403251	418720	1	Built	N/A
3814	Gregson & Whitham	Carrfield Mill	Burnley Road	Todmorden.	0.7397	390185	426104	43	Built	N/A
3819	Garage site off	Rose Grove Lane		Sowerby Bridge.	0.0266	405115	424070	1	Built	N/A
3821	Site of Hangingroyd Mill	Victoria Road		Hebden Bridge.	0.2708	399318	427653	32	Built	N/A
3824		1 to 4 Bottomley Road	Walsden	Todmorden.	0.0448	394251	421120	1	Built	N/A
3828	Beaumont	New Street	Southowram	Halifax.	0.0877	411615	423659	4	Built	N/A
3832	Withins Clough Treatment Works	Rudd Lane	Cragg Vale	Hebden Bridge.	0.2484	398595	423241	1	Built	N/A
3838	Land adjacent Birks House	Birks Lane	Walsden	Todmorden.	0.0715	393570	421965	1	Built	N/A
3856	Land at Ploughcroft House	Ploughcroft Lane		Halifax.	0.0379	408819	426996	1	Built	N/A
3874	Higher Masfield House	Shackleton Hill	Wadsworth	Hebden Bridge.	0.1220	397682	429930	1	Built	N/A
3889	Garden adjacent	19 Upper Range		Halifax.	0.0339	409299	426393	2	Built	N/A
3904	Crow Wood	9 Catherine Slack		Brighouse.	0.1889	413790	424568	4	Built	N/A
3916	Height Green Farm Barn	Quaker Lane	Ripponden	Sowerby Bridge.	0.0431	403880	419117	1	Built	N/A

3920	Barn at Wren Nest	Wren Nest Road	Ripponden	Sowerby Bridge.	0.0796	402498	419750	1	Built	N/A
3928	Site adjacent	16 Church Lane		Elland.	0.0216	412685	421341	1	Built	N/A
3931	Lumbutts Centre	Lumbutts		Todmorden.	0.4273	395638	423437	5	Built	N/A
3932	Lambert House	58 Rochdale Road	Greetland	Halifax.	0.0098	409693	421222	1	Built	N/A
3933	Land rear of Beech Dale	Beechwood Road		Halifax.	0.1304	407726	427938	2	Built	N/A
3939	Site of	62 to 73 Longfield Grove		Todmorden.	0.3182	393724	423898	11	Built	N/A
3955	Barker Royd Barns and Mill	Church Lane	Southowram	Halifax.	0.3737	412167	423876	7	Built	N/A
3956	Park View and associated land to the east	Green Lane	Shelf	Halifax.	2.0706	412813	428598	30	Under Construction	N/A
3967	75 Upper Lane	Northowram		Halifax.	0.0897	410983	427183	2	Built	N/A
3973	Lower Rawtenstall Barn	Dark Lane	Blackshaw Head	Hebden Bridge.	0.0112	397638	427257	1	Built	N/A
3979	Claremount Works	Claremount Road		Halifax.	0.3917	409658	426019	10	Built	N/A
3999		19 Old Gate		Hebden Bridge.	0.0274	399177	427282	6	Built	N/A
4017	Parish Hall	Sturton Lane	Illingworth	Halifax.	0.1148	407354	428996	6	Built	N/A
4028	Land to south West of Burrwood Mill	Stainland Road	Holywell Green	Halifax.	0.1530	408816	420075	4	Under Construction	N/A
4046		Garage opposite Spencer House	Sisley Lane	Todmorden.	0.0747	396247	423691	1	Built	N/A
4064	Blue Ball Inn	Norland Town Road	Norland	Sowerby Bridge.	0.1748	406837	422908	3	Built	N/A
4070	Chapel of Rest	33 Rochdale Road	Ripponden	Sowerby Bridge.	0.0094	403794	419676	2	Built	N/A
4071	Site of	35 Rochdale Road	Ripponden	Sowerby Bridge.	0.0060	403788	419671	1	Built	N/A
4078	Garage Site adjacent 3 Tower Gardens	Wakefield Gate		Halifax.	0.0265	407794	423966	1	Built	N/A
4080	Outbuilding at Hullen Edge Farm	Hullen Edge	Norland	Sowerby Bridge.	0.0414	405529	422557	1	Built	N/A
4088	Barn at Banquet House Farm	Firth House Lane	Barkisland	Halifax.	0.0405	405686	417934	1	Built	N/A
4094	Land rear of	44 Tewit Lane	Illingworth	Halifax.	0.0269	407470	429147	1	Built	N/A
4097		647 to 649 Bradford Road	Bailiff Bridge	Brighouse.	0.0119	414861	425224	3	Built	N/A
4098		East Hey Head Farm Barn	Hey Head Lane	Todmorden.	0.0289	394569	425648	1	Built	N/A
4099	Garden of	75 Tofts Grove	Rastrick	Brighouse.	0.0444	413558	421298	1	Built	N/A
4117	Grounds of Manor House Nursing Home	127 Wakefield Road	Lightcliffe	Halifax.	1.7616	413646	425550	42	Under Construction	N/A

4121	Royd Works	Simpson Road	Mytholmroyd	Hebden Bridge.	0.0339	400878	425816	3	Built	N/A
4130	Site of Mill House Motors	Leigh Street		Sowerby Bridge.	0.0519	406471	424206	6	Built	N/A
4143	Garage and workshop rear Of 1 George Street off	Savile Road		Elland.	0.0051	410699	420486	1	Built	N/A
4145	Land adjacent	5 Jerusalem Square	Southowram	Halifax.	0.0884	411515	423466	2	Built	N/A
4146	Garden of	22 Smith House Lane		Brighouse.	0.0351	414128	424184	1	Built	N/A
4148	Within Fields Garage	Marsh Lane	Southowram	Halifax.	0.1685	410594	424507	2	Built	N/A
4161	Chapelfield Croft	Old Bank	Ripponden	Sowerby Bridge.	0.0176	404124	419738	2	Built	N/A
4167		Land adjacent and rear of	105 Wheatley Road	Halifax.	0.1241	407157	426742	1	Built	N/A
4186	Adjacent	36 Woodlands Grove		Halifax.	0.0198	409249	426340	1	Built	N/A
4193	Canteen Building	Jubilee Works	Jubilee Street North	Ovenden.	0.0090	408102	427451	1	Built	N/A
4198	Land to north of Staups Dam	Staups Lane		Todmorden.	0.1651	396039	426556	1	Built	N/A
4200		27 Clare Road		Halifax.	0.0237	409427	424749	7	Built	N/A
4202	Queens House	Queens Road		Halifax.	0.0093	407939	424803	1	Built	N/A
4208	Garden of Edenfield	152 Huddersfield Road		Brighouse.	0.0703	414499	421232	1	Built	N/A
4210	Wrens Nest Farm	Wren Nest Road	Ripponden	Sowerby Bridge.	0.0747	402472	419753	1	Built	N/A
4217	Barn At Cobble Bank Farm	Cobble Bank	Mixenden	Halifax.	0.0481	406698	428649	1	Built	N/A
4221	Outbuildings at Fernside	Knowle Top Road	Lightcliffe	Halifax.	0.0070	413276	425696	1	Built	N/A
4224	Garden adjacent	17 Thirlmere Avenue		Elland.	0.0244	411845	421360	1	Built	N/A
4240	Garden of	77 Victoria Road		Elland.	0.0586	410360	420660	1	Built	N/A
4244		113 Keighley Road	Illingworth	Halifax.	0.0023	407005	428369	1	Built	N/A
4253	Garage at	7 Furness Grove	Illingworth	Halifax.	0.0042	407061	427832	1	Built	N/A
4256	Four Winds	18 Bacup Road		Todmorden.	0.0230	392901	423128	1	Built	N/A
4264	Former Hebden Royd Adult Education Centre	Central Street		Hebden Bridge.	0.0387	399087	427183	5	Under Construction	N/A
4278	Land to east of Crosslee	Brighouse Road	Hipperholme	Brighouse.	4.2421	413015	424806	147	Built	N/A
4282	Vacant Garage Site Opposite Drapers Corner	Smithwell Lane	Heptonstall	Hebden Bridge.	0.0516	398187	428545	1	Built	N/A
4288	Land adjacent	19 Back Salisbury Terrace		Halifax.	0.1411	408878	426459	6	Built	N/A

4292	Green Lane Farm	Soaper Lane	Shelf	Halifax.	0.0639	412516	429287	3	Built	N/A
4296	Land adjacent	30 Gordon Street		Elland.	0.0214	410794	420770	1	Built	N/A
4301	White Horse Inn	46 Rastrick Common		Brighouse.	0.0275	414246	422113	1	Built	N/A
4302	Beauvale	New Lane	Skircoat Green	Halifax.	0.0311	408748	422896	1	Built	N/A
4307	Birks Farm	Birks Lane	Ripponden	Sowerby Bridge.	0.0522	404102	420275	1	Built	N/A
4313	Smithfield Joinery Works	South Lane		Elland.	0.4276	410901	420356	21	Under Construction	N/A
4318	Lower Brackens Farm	Stanage Lane	Shelf	Halifax.	0.5628	412328	429629	3	Under Construction	N/A
4325	Royal Oak Inn	Lower Edge Road	Rastrick	Brighouse.	0.1781	412710	421476	1	Built	N/A
4328	Land adjacent	21 Dewsbury Road	Rastrick	Brighouse.	0.0302	413047	420693	1	Built	N/A
4333		Vale School House	Burnley Road	Todmorden.	0.1477	391048	426251	6	Under Construction	N/A
4335	Ing Royd	Broomfield Avenue		Halifax.	0.3063	408527	423218	24	Built	N/A
4339	Weaner Hill Farm	Slack Lane		Halifax.	0.0504	405282	419342	1	Built	N/A
4345	Second	third & forth floors	20 Crown Street	Halifax.	0.0081	409261	425230	4	Built	N/A
4349	The Stables Hullen Edge Farm	Goose Nest Lane	Norland	Sowerby Bridge.	0.0245	405558	422562	1	Built	N/A
4351		18 Bridge Gate		Hebden Bridge.	0.0069	399225	427247	1	Built	N/A
4354	First floor	255 to 261 King Cross Road		Halifax.	0.0409	407846	424242	2	Built	N/A
4356	Barn at Scout Hall Farm	Lee Lane	Shibden	Halifax.	0.0758	409553	427686	2	Under Construction	N/A
4359	Land adjacent Copperas House	Cinderhills Lane	Siddal	Halifax.	0.1115	410136	423196	2	Under Construction	N/A
4360		9a Crown Street		Hebden Bridge.	0.0084	399240	427226	1	Built	N/A
4363	Land adjacent Ellistones Place	Saddleworth Road	Greetland	Halifax.	0.1192	408360	420966	2	Built	N/A
4364	Rear of	67 Norton Drive		Halifax.	0.0234	405531	425278	1	Built	N/A
4366	Site of	13 Wakefield Gate		Halifax.	0.0261	407947	423886	1	Built	N/A
4373	Site of Former Sterne Mill & Sewage Works	Wakefield Road		Sowerby Bridge.	3.7579	407600	423396	172	Under Construction	N/A
4376	The Old Manse	Upper Sutherland Road	Hipperholme	Halifax.	0.0930	413108	425773	1	Built	N/A
4378		11 Saddleworth Road	Greetland	Halifax.	0.0139	409794	421131	1	Built	N/A
4383	Bridge House	Upper Martin Green	Greetland	Halifax.	0.1092	408156	421235	2	Built	N/A

4385		23 Foster Lane		Hebden Bridge.	0.0021	399360	427687	1	Built	N/A
4386		47 Oxford Lane	Siddal	Halifax.	0.0124	409965	423461	1	Built	N/A
4390	Ball Green Farm	Well Head Lane	Sowerby	Sowerby Bridge.	0.1209	403511	423049	3	Under Construction	N/A
4395		103 Northgate		Halifax.	0.0058	409314	425585	4	Under Construction	N/A
4396	Garage/workshop at	1 Dean Villas	Walsden	Todmorden.	0.0346	393937	421026	1	Built	N/A
4397	Adjacent Goose Gate	Whitehill Road	Illingworth	Halifax.	0.0751	407750	428606	1	Built	N/A
4398	Land off	Slade Lane	Rastrick	Brighouse.	0.0557	413543	420742	2	Built	N/A
4402	Adjacent	184 Illingworth Road	Illingworth	Halifax.	0.0280	407657	429504	1	Built	N/A
4403	Barn at Deep Lane Farm	Deep Lane	Clifton	Brighouse.	0.0722	416586	422562	1	Built	N/A
4404	Attic at Bramsche Bar	31 Rochdale Road		Todmorden.	0.0096	393611	424023	1	Built	N/A
4407	Plumbers Store	Bradshaw Lane	Bradshaw	Halifax.	0.0157	408028	430263	1	Built	N/A
4408	Rodmer Clough Farm	Dark Lane	Colden	Hebden Bridge.	0.1018	395284	429120	1	Built	N/A
4409	1st floor Peacock Inn	46 Cote Hill	Burnley Road	Warley	0.0146	406513	424849	2	Built	N/A
4411	Upper Moulson Place Farm Barn	Broom Hill Road	Sowood	Halifax.	0.0800	406810	417219	1	Built	N/A
4412	Units 40-42	Washer Lane		Halifax.	0.0982	407752	423899	7	Built	N/A
4416	Land at Far Royd Farm	Shay Lane	Holmfild	Halifax.	0.0399	408252	427645	1	Built	N/A
4417	Ridge Nook Farm	Widdop Road	Heptonstall	Hebden Bridge.	0.1025	395551	431559	1	Built	N/A
4418	Land at	Broad Oak Place	Hipperholme	Halifax.	0.0966	412687	424669	1	Built	N/A
4421	Garage/workshop at Strines Clough Farm	Brown Hill Lane	Blackshaw Head	Hebden Bridge.	0.0102	394900	428065	1	Built	N/A
4422	Adjacent	30 Rochdale Road	Greetland	Halifax.	0.1399	409495	421424	2	Built	N/A
4424	Crook Cottage	Inchfield House	Inchfield Road	Walsden.	0.0287	393378	421936	1	Built	N/A
4425	Lean-to rear of	1 Jumbles	Mixenden	Halifax.	0.0095	406544	427989	1	Built	N/A
4427	Lower Slack Farm, 7 Lower Slack	Wainstalls Road	Wainstalls	Halifax.	0.0531	404645	428486	2	Built	N/A
4432	24 Slack Top	Smithwell Lane	Heptonstall	Hebden Bridge.	0.0643	397849	428713	1	Built	N/A
4443	The Meadows	Woodhouse Lane		Halifax.	0.0523	408184	423256	1	Built	N/A
4445	Site of	305 Skircoat Green Road		Halifax.	0.0624	409123	423165	1	Built	N/A
4446		37 Moor End Road		Halifax.	0.0251	405482	428163	1	Built	N/A

4449		60 Copley Lane		Halifax.	0.0841	408751	422474	1	Built	N/A
4451	1st & 2nd floors	334 Skircoat Green Road		Halifax.	0.0128	409108	423044	1	Built	N/A
4457	Land south of	6 Reservoir Road	Pellon	Halifax.	0.0645	407411	425677	3	Built	N/A
4459	Detached meeting room In grounds of	8 Bonegate Road		Brighouse.	0.0228	414596	423268	1	Built	N/A
4460		77 Nursery Lane	Ovenden	Halifax.	0.0519	407717	427101	3	Built	N/A
4461	Adjacent	77 Nursery Lane	Ovenden	Halifax.	0.0635	407713	427107	3	Built	N/A
4463	Rear of	73 Tofts Grove	Rastrick	Brighouse.	0.0437	413565	421310	1	Built	N/A
4464	Adjacent Pumphouse	Phoebe Lane		Halifax.	0.0602	409819	423632	2	Built	N/A
4467	Part of Linden Works	Linden Road		Hebden Bridge.	0.0232	399183	427536	1	Built	N/A
4468	The Hebble Brook	2 Mill Lane	Mixenden	Halifax.	0.0880	406430	429021	4	Built	N/A
4471		5 Ferguson Street		Halifax.	0.0099	409089	424962	6	Built	N/A
4473	Garage at Southdale	Greenroyd Avenue	Skircoat Green	Halifax.	0.0047	408860	423356	1	Built	N/A
4475	South of	25a Woodside View	West Vale	Halifax.	0.0167	409617	420812	1	Built	N/A
4477	Barn Adjacent To 19 Pickwood Scar	Dye House Lane	Norland	Sowerby Bridge.	0.0255	407223	422428	1	Built	N/A
4484	Outbuilding at	12 Shibden Hall Croft	Shibden	Halifax.	0.0752	410899	425608	1	Built	N/A
4485	2nd & 3rd floors	161 King Cross Road		Halifax.	0.0068	408127	424412	1	Built	N/A
4491	Hopwood Hall	2 Hopwood Lane		Halifax.	0.0312	409002	425029	14	Built	N/A
4497	Elm View Nursing Home	2 Elm View	Skircoat Green Road	Halifax.	0.0542	409367	423973	6	Built	N/A
4498	Treasure House	11 Newlands Gate	Newlands Road	Warley.	0.0474	405337	425307	2	Built	N/A
4499	Garden of Rowan Cottage	6 Toothill Lane	Rastrick	Brighouse.	0.0618	414441	421206	1	Built	N/A
4503	Land adjacent	26 Thornhill Road		Brighouse.	0.0238	414176	422465	1	Built	N/A
4505	11 Burnley Road	Luddenden Foot		Halifax.	0.0045	403803	424984	1	Built	N/A
4506	31 to 33 Stainland Road	West Vale		Halifax.	0.0211	409634	421174	2	Built	N/A
4508	Former Mill And Adjacent Barn	Bowling Alley Terrace		Brighouse.	0.1027	414152	421631	2	Under Construction	N/A
4510	The Coach House	Manor Heath Road		Halifax.	0.0733	408870	423588	3	Built	N/A
4512	Former Engineering Works	Turner Street	Ovenden	Halifax.	1.2959	408332	426656	63	Under Construction	N/A

4513	Mytholme Ridge	Halifax Old Road	Hipperholme	Halifax.	0.1005	411584	425609	1	Built	N/A
4514	Rear of	21 Beechwood Road	Holmfield	Halifax.	0.0648	408052	428087	2	Built	N/A
4517	Land off	New Street	Southowram	Halifax.	0.0911	411418	423634	8	Built	N/A
4518	Barn at Jay House Farm	Jay House Lane	Clifton	Brighouse.	0.0205	415596	424120	1	Built	N/A
4520	Warren Wells	Wood Bottom Lane		Brighouse.	0.1825	413296	423838	1	Built	N/A
4522	The Hippopottery	Gardeners Square	Hipperholme	Halifax.	0.0195	412318	425832	6	Built	N/A
4523	Site of	485 Rochdale Road		Todmorden.	0.0489	393110	422456	2	Built	N/A
4528	Barn North West Of Lower Moor Farm	Cote Road	Ripponden	Sowerby Bridge.	0.0390	403162	420134	1	Built	N/A
4532	Land at former Blackley Brickworks	Blackley Road		Elland.	3.4422	410398	419888	84	Under Construction	N/A
4534	The Cobbett Centre	Village Street	Norwood Green	Brighouse.	0.0973	413782	427031	8	Built	N/A
4535	Hawthorn Cottage	Gordon Street	Boothtown	Halifax.	0.0243	408912	426865	1	Built	N/A
4537	Agricultural building off Lower Lee	Lee Wood Road		Hebden Bridge.	0.3581	399101	428519	1	Built	N/A
4539		13 Bowling Green Road	Stainland	Halifax.	0.0053	407698	419343	1	Built	N/A
4541	Former Graveyard Of Greetland Methodist Church	Rochdale Road	Greetland	Halifax.	0.1069	408822	421272	7	Built	N/A
4542	Site of	27 Prospect Avenue		Halifax.	0.0377	407011	423902	1	Built	N/A
4543	Energy House	Ingham Lane	Bradshaw	Halifax.	0.1542	407519	430247	3	Built	N/A
4544		3 to 5 King Cross Street		Halifax.	0.0278	409012	424977	4	Built	N/A
4545	Adjacent	72 Boy Lane	Wheatley	Halifax.	0.0113	406820	427001	1	Built	N/A
4546	Todmorden Old Hall	Rise Lane		Todmorden.	0.0835	393550	424074	1	Built	N/A
4550		30 Oakdale Close	Ovenden	Halifax.	0.0206	408265	426905	1	Built	N/A
4551	2nd & 3rd floors	8 George Street		Halifax.	0.0431	409165	425127	7	Built	N/A
4553		154 Hollins Road		Todmorden.	0.0041	393335	422264	2	Built	N/A
4556	Site of Barker House	Barker Close	Siddal	Halifax.	0.2305	410004	423421	9	Built	N/A
4558	Land to east of	Briscoe Lane	Greetland	Halifax.	0.0589	409138	421231	1	Built	N/A
4559		1 the Grove	Shelf	Halifax.	0.1320	412360	428741	1	Built	N/A
4560		61a Tuel Lane		Sowerby Bridge.	0.0152	405785	423986	1	Built	N/A

4564	Rear of	3 The Crescent	Southowram	Halifax.	0.0054	410567	424660	1	Built	N/A
4565		8 Friendly Fold Road	Ovenden	Halifax.	0.0042	408255	426753	1	Built	N/A
4570	First, second & third floors	15 to 17 Crown Street		Halifax.	0.0141	409275	425208	6	Built	N/A
4571	Land To north west of Western Cottage	School Lane	Illingworth	Halifax.	0.0977	407874	429648	2	Built	N/A
4572	43 Stephens Street	Copley		Halifax.	0.0042	408475	422466	1	Built	N/A
4574		274 to 276 Thornhill Road	Rastrick	Brighouse.	0.0191	413894	421660	2	Built	N/A
4576	Marsh Works	Old Marsh	Burnley Road	Sowerby Bridge.	0.0110	405877	424171	1	Built	N/A
4577		2 to 4 Southgate		Elland.	0.0214	410767	421088	1	Built	N/A
4578	Rear of Sovereign House	8 Bonegate Road		Brighouse.	0.0364	414588	423255	2	Built	N/A
4581		354 & 356 Ovenden Road		Halifax.	0.0093	408112	427377	1	Built	N/A
4583	3 Lane Bottom	The Long Causeway	Blackshaw Head	Hebden Bridge.	0.0119	395602	427523	1	Built	N/A
4585	Adjacent Royd Farm	The Royd		Todmorden.	0.0989	393540	425089	1	Built	N/A
4586	Hoyle House Farm	Smith House Lane	Lightcliffe	Brighouse.	0.2666	414162	424665	1	Built	N/A
4587		5 Coronation Street		Elland.	0.0080	410821	420960	1	Under Construction	N/A
4588	Former Police Station	Ovenden Road		Halifax.	0.0617	408266	427054	3	Built	N/A
4589	Basement of	12 Mostyn Mount	Ovenden	Halifax.	0.0096	408186	427204	1	Built	N/A
4590	Stoneleigh House	Brighouse & Denholmegate Road	Shelf	Halifax.	0.1472	412012	427581	1	Built	N/A
4592	Land adjacent	291 Claremount Road	Boothtown	Halifax.	0.0469	409816	425881	4	Built	N/A
4594		24 West Lodge Crescent	Ainley Top	Elland.	0.0673	411898	419633	1	Built	N/A
4595		351 Halifax Road		Brighouse.	0.0335	413263	424152	1	Built	N/A
4596	1st & 2nd floors	48 Southgate		Elland.	0.0060	410838	420981	2	Built	N/A
4597	Basement	33 Savile Park		Halifax.	0.0047	408328	424047	1	Built	N/A
4598	First floor Lister Lane Surgery	Victoria Lodge	30 Lister Lane	Halifax.	0.0237	408980	425137	5	Built	N/A
4599	Site of outbuilding at Marsden Gate House	Marden Gate	Sowood	Elland.	0.0094	407408	417712	1	Built	N/A
4600	Rear of	291 Willowfield Road		Halifax.	0.0563	406643	424552	1	Built with lapsed plots	N/A

4602	Land to rear of	2 to 5 Carr Green Drive	Rastrick	Brighthouse.	0.0245	413773	421089	1	Built	N/A
4603	1 Savile Terrace	Savile Park Road		Halifax.	0.0251	408466	424372	7	Built	N/A
4604	Rear of	453 Halifax Road		Brighthouse.	0.0797	412953	424361	2	Built	N/A
4606		5 Carlton Strret		Halifax.	0.0084	409070	424900	2	Built	N/A
4607	Outbuilding at Perth House	Knowle Top Road	Lightcliffe	Brighthouse.	0.0097	413312	425708	1	Built	N/A
4610		19b Crown Street		Hebden Bridge.	0.0110	399262	427259	1	Built	N/A
4611	Grounds of The Haven	Eversley Road		Hebden Bridge.	0.0363	399071	427679	1	Built	N/A
4614	Outbuilding at Lower Bank House Farm	Beestonley Lane	Stainland	Elland.	0.0076	406629	419824	1	Built	N/A
4615	Riverdene House	Jack Bridge, Smithy Lane	Colden	Hebden Bridge.	0.2894	396254	428249	2	Built	N/A
4617	Land off	Hullen Road		Elland.	0.0272	409906	420572	1	Built	N/A
4619	Garden of	30 Hawthorn Close	Clifton	Brighthouse.	0.0436	415531	423104	1	Built	N/A
4620	Ground floor	4 Adelaide Street		Todmorden.	0.0069	393586	424554	1	Built	N/A
4621	Former Walsden CE Infants School	St Peters Gate	Walsden	Todmorden.	0.1346	393559	422018	5	Built	N/A
4622	Land north of	4 Rock View	Holywell Green	Halifax.	0.0530	409192	419852	1	Built	N/A
4625	Land west of	4 Copley Close	Copley	Halifax.	0.0353	408854	422516	1	Built	N/A
4626	Barn at Pickwood House Farm	Pickwood Lane		Sowerby Bridge.	0.0141	407294	422637	1	Built	N/A
4628	Site of Luddendenden Methodist Church	High Street	Luddenden	Halifax.	0.0609	404066	426027	2	Built	N/A
4630	Land south of Lee Croft, Sowood Fold	Green Lane	Sowood	Elland.	0.0567	408034	418304	1	Built	N/A
4637	Garden of Leewood	Woodhouse Lane		Halifax.	0.2235	408066	423147	1	Built	N/A
4638	Garden of Upper Tewit	2 Tewit Gardens	Illingworth	Halifax.	0.2274	407561	429238	4	Built	N/A
4640	Land east of	Jumps Road		Todmorden.	0.1905	392197	425654	1	Built	N/A
4641	Land to rear of	96 Rayner Road		Brighthouse.	0.0635	414232	423626	1	Built	N/A
4642		662 Rochdale Road		Todmorden.	0.0062	393480	421911	1	Built	N/A
4643	Gardens between Scarborough Terrace and	Granville Street		Elland.	0.0352	410659	420755	1	Built	N/A
4645	Barns at former Stanage Farm	Stanage Lane	Shelf	Halifax.	0.1508	412221	429404	2	Built	N/A
4646		5 Whitwell Grove		Elland.	0.0104	411612	421218	1	Built	N/A

4648	Land to east of	69 to 113 Oldham Road	Ripponden	Sowerby Bridge.	0.2303	403617	419307	9	Built	N/A
4650		2 Beverley Place		Halifax.	0.0424	408936	426453	6	Built	N/A
4652	Above Unit 1	Central Joinery Works	Oldham Road	Ripponden	0.0133	403856	419621	1	Built	N/A
4656	High Bentley Barn	Green Lane	Shelf	Halifax.	0.1974	413100	428498	1	Built	N/A
4657	Adjacent	23 Briscoe Lane	Greetland	Halifax.	0.0251	408972	421238	1	Built	N/A
4658	Site of former Windmill Inn	17 Stanage Lane	Shelf	Halifax.	0.1861	412268	429234	4	Built	N/A
4660		2 & 2a Osborne Street		Hebden Bridge.	0.0018	399404	427261	1	Built	N/A
4662	Heathstone	Queens Gate		Halifax.	0.0346	408742	423883	4	Built	N/A
4665	Garden of	43 Sowerby New Road		Sowerby Bridge.	0.0040	405419	423396	1	Built	N/A
4666		35 Catherine Street		Elland.	0.0028	410968	420696	1	Built	N/A
4668	Rayner Lee	Nursery Lane	Ripponden	Sowerby Bridge.	0.0989	403101	419291	1	Built	N/A
4671	194 Savile Park Road			Halifax.	0.0106	408474	424276	2	Built	N/A
4673	Site of former Liberal Club	Belgrave Crescent		Halifax.	0.1320	409991	425893	9	Under Construction	N/A
4676	Crest Bungalow	Hill Crest Close		Sowerby Bridge.	0.0540	405634	424094	1	Built	N/A
4677	Barn south of	3 Little Hollin Hey		Hebden Bridge.	0.0596	401165	425007	1	Built	N/A
4678	Far Syke House	Branch Road	Barkisland	Halifax.	0.1862	407503	420846	3	Built	N/A
4679	School Farm	Kennel Lane	Mill Bank	Sowerby Bridge.	0.1275	402129	421937	1	Built	N/A
4681	Malt Shovel Inn	10 Church Lane	Southowram	Halifax.	0.0309	412227	423620	4	Built	N/A
4682	Land west of Westfield	Dyson Lane	Ripponden	Sowerby Bridge.	0.1822	403255	419042	1	Built	N/A
4683	Savile House	Savile Road		Elland.	0.1242	410746	420285	8	Built	N/A
4686	First & second floors Machpelah Works	Burnley Road		Hebden Bridge.	0.0142	399512	427009	4	Built	N/A
4689	Trough Farm	Stocks Lane	Luddenden	Halifax.	0.0807	404649	426896	1	Built	N/A
4692	Site of Sunningdale House	Stocks Lane	Mount Tabor	Halifax.	0.1175	404931	427155	1	Built	N/A
4693	Part of Rose & Crown Inn	355 Halifax Road		Todmorden.	0.0112	395132	424615	2	Built	N/A
4696	Adjacent 5A Pepper Hill	Cock Hill Lane	Shelf	Halifax.	0.0102	411336	428890	1	Built	N/A
4698		21 Brunswick Street		Hebden Bridge.	0.0059	398898	427239	1	Built	N/A

4699	Side of	68 Ovenden Road		Halifax.	0.0185	408417	426704	1	Built	N/A
4700		26 School Close	Ripponden	Sowerby Bridge.	0.0388	404307	419630	1	Built	N/A
4701	Basement of	8 Aire Street		Brighouse.	0.0082	414636	422382	1	Built	N/A
4702	Garden of Yew Trees Cottage	St Giles Road	Lightcliffe	Brighouse.	0.0588	413063	424873	1	Built	N/A
4703		14 to 16 Corporation Street		Sowerby Bridge.	0.0069	405937	423599	2	Built	N/A
4705	Lower High Sunderland	Turner Lane		Halifax.	0.0290	409894	426668	1	Built	N/A
4706		4 Clough Head	Warley	Halifax.	0.0353	405425	425523	1	Built	N/A
4710	Broadacre	14 Higgin Chamber	Acre Lane	Luddenden Foot	0.0150	403483	424269	1	Built	N/A
4713	Cranham	The Mount	The Hollins	Todmorden.	0.1368	394154	424767	1	Built	N/A
4714	Country Friends	Parkin Lane		Todmorden.	0.1403	391778	424709	1	Built	N/A
4715	Land east of	15 Clough Lane	Rastrick	Brighouse.	0.0530	413337	420690	2	Built	N/A
4718	Underhill	Norwood Green Hill	Norwood Green	Brighouse.	0.1093	413692	426826	1	Built	N/A
4719			12 Park Road	Halifax.	0.0398	408610	424976	1	Built	N/A
4721	Former Depot Site	Maltings Road		Halifax.	1.2247	406722	426810	47	Built	N/A
4729	Barn At Stoneleigh Farm	Brighouse & Denholmegate Road	Shelf	Halifax.	0.1423	412010	427530	1	Built	N/A
4730	Ground floor	2 Pellon Lane		Halifax.	0.0053	409088	425289	1	Built	N/A
4733	Butts Green Farm	Butts Green Lane	Warley	Halifax.	0.0065	404460	424984	1	Built	N/A
4735	Garden of	West Lodge Crescent	Ainley Top	Elland.	0.0065	411878	419645	1	Built	N/A
4736	Garden of	7 Sandhall Drive		Halifax.	0.0068	406747	425316	1	Built	N/A
4737		31 Harrison Road		Halifax.	0.0156	409169	424777	1	Built	N/A
4743	Hough Mills	Bradford Road	Stump Cross	Halifax.	0.0239	411509	426411	5	Built	N/A
4744	Garage at 1 Lyngarth	Towngate	Sowerby	Sowerby Bridge.	0.0193	403981	423294	1	Built	N/A
4745	Basement of	29 to 31 Rochdale Road	Ripponden	Sowerby Bridge.	0.0053	403801	419679	1	Built	N/A
4749	Allotment Gardens	Common Lane	Southowram	Halifax.	0.1592	410560	424466	2	Under Construction	N/A
4750			13 to 15 Daisy Street	Halifax.	0.0098	408755	424944	2	Built	N/A

4751	Ovenden Hall	Ovenden Road		Halifax.	0.0551	408274	427035	5	Built	N/A
4752	Land south of	1 Hammerstones Road		Elland.	0.0553	409814	420497	1	Built	N/A
4755	Garden of	7 Lyndhursts Avenue		Brighouse.	0.0474	414432	421456	1	Built	N/A
4756	Elm Field	Leeds Road	Hipperholme	Halifax.	0.0999	412938	425586	2	Built	N/A
4757	Garden of	15 Wheatley Road		Halifax.	0.0508	408020	426344	1	Built	N/A
4758	Adjacent Savile House	Savile Road		Elland.	0.0220	410736	420310	1	Built	N/A
4762	Southfield	Stafford Road		Halifax.	0.1273	409317	423472	4	Built	N/A
4763	Southfield	Stafford Road		Halifax.	0.2380	409311	423504	10	Built	N/A
4764	Central Garage Accident Repair Centre	The Riverside Complex	Mill Fold Way	Ripponden	0.3320	403912	419489	7	Under Construction	N/A
4766	Land north of	77 Southowram Bank		Halifax.	0.1078	410004	425230	1	Built	N/A
4767	St Cass 1-3 Bunny Green	Hall Lane	Northowram	Halifax.	0.0230	410939	427710	1	Built	N/A
4774	Police Station	Hope Street		Hebden Bridge.	0.0221	399313	427175	1	Built	N/A
4777	Moor End United Reform Church	Upper Greenroyd	Mount Tabor	Halifax.	0.0352	405451	428067	1	Built	N/A
4779	Adjacent Palma Indian Restaurant	60 to 62 Fern Street	Boothtown	Halifax.	0.0400	408937	426692	3	Built	N/A
4780		60 Burnley Road	Mytholmroyd	Hebden Bridge.	0.0056	401550	425983	1	Built	N/A
4783	Park Lodge	8 Holly Bank Park	Rastrick	Brighouse.	0.0632	413692	421668	1	Built	N/A
4784	Parma Indian Restaurant	60 to 62 Fern Street	Boothtown	Halifax.	0.0257	408943	426671	3	Built	N/A
4785		34 & 36 Hanson Lane		Halifax.	0.0168	408489	425378	1	Built	N/A
4792	Grounds of Heath Bank Nursing Home	Linden Road		Halifax.	0.0384	409114	423931	1	Built	N/A
4793		6 to 7 Callis Wood Bottom	Erringden	Hebden Bridge.	0.0038	397250	426338	1	Built	N/A
4796	Land to rear of	2 to 5 Carr Green Drive	Rastrick	Brighouse.	0.0316	413752	421086	1	Built	N/A
4799	Rear of	269 Willowfield Road		Halifax.	0.0608	406662	424535	1	Built	N/A
4801		1 and 3 Crown Yard	Southgate	Elland.	0.0054	410852	420947	2	Built	N/A
4806	Grand View Hotel	108 Wheatley Lane	Lee Mount	Halifax.	0.0626	408128	426365	11	Built	N/A
4809	Intake Farm	Stainland Dean	Stainland	Elland.	0.0488	406546	418364	1	Built	N/A

4812		6 to 8 Bradford Road		Brighouse.	0.0248	414694	422853	3	Built	N/A
4813	12/13 (The Lodge) Abbotts Ladies Homes	Skircoat Green Road		Halifax.	0.0151	409187	423421	2	Under Construction	N/A
4814		21 Heath Hill Road		Halifax.	0.0068	405348	427002	1	Built	N/A
4815	Land adjacent	10 Martin Green Lane	Greetland	Halifax.	0.0405	408266	421252	1	Built	N/A
4816	Annex, 4 Wood Side	Branch Road	Barkisland	Sowerby Bridge.	0.0144	406963	420216	1	Built	N/A
4818	Site of	58 Crowtrees Lane		Brighouse.	0.1052	413623	421302	2	Under Construction	N/A
4819	First floor	14 Victoria Road		Elland.	0.0057	410841	420911	1	Built	N/A
4823	1 Whitehall Fold	Townfield Lane	Heptonstall	Hebden Bridge.	0.0142	398718	428163	1	Built	N/A
4831	3 Upper Range	Claremount Road	Boothtown	Halifax.	0.0213	409319	426335	1	Built	N/A
4836	Barn south of Greenfield	Park Lane	Sowood	Elland.	0.0756	407786	418506	1	Built	N/A
4842	Land north west of The Grand View Hotel	Wheatley Lane	Lee Mount	Halifax.	0.0468	408107	426375	4	Built	N/A
4843	Garden of	165 Halifax Road		Brighouse.	0.0422	413811	423571	1	Built	N/A
4849	Garden of Ashlands	5 Washer Lane		Halifax.	0.0624	407620	423995	1	Built	N/A
4851	High Cross Barn	High Cross Lane	Shelf	Halifax.	0.0106	411243	429095	1	Built	N/A
4855	Land opposite	119 Rochdale Road	Ripponden	Sowerby Bridge.	0.0320	403346	419255	1	Built	N/A
4856	Outbuilding at The Bungalow	Clough Moor Bridge	Greetland	Halifax.	0.0096	407050	422001	1	Built	N/A
4867	Grove Dene	Wade House Road	Shelf	Halifax.	0.0047	412363	428804	1	Built	N/A
4868	Land north of Duke of York Inn	West Street	Shelf	Halifax.	0.5494	411725	427995	13	Built	N/A
4869	Upper Smithy Clough Barn	Smithy Clough Lane	Ripponden	Sowerby Bridge.	0.0571	402453	419099	1	Built	N/A
4870		3 Wards End		Halifax.	0.0186	409366	424969	7	Built	N/A
4879	Adjacent	11 Erringden Road	Mytholmroyd	Hebden Bridge.	0.0175	401009	426010	1	Built	N/A
4880	Owler Mill	Bacup Road		Todmorden.	0.0525	391086	423802	1	Built	N/A
4901	Acre Wood	New Lane	Skircoat Green	Halifax.	0.1670	408680	422903	1	Built	N/A
4903	Barn west of	5 New Road	Blackshaw Head	Hebden Bridge.	0.0212	396149	428236	2	Built	N/A
4908	Lower Brockholes Farm	Lane Head Lane	Causeway Foot	Halifax.	0.0212	406585	429508	1	Built	N/A
4912	Garden of Lothian House	Lightcliffe Road		Brighouse.	0.0779	414073	424098	1	Built	N/A

4918		2 to 4 Trinity Place		Halifax.	0.0376	409032	424805	10	Built	N/A
4921	First floor	95 Birds Royd Lane		Brighouse.	0.0075	415197	422263	1	Built	N/A
4922	Thornccliffe	145 Grimescar Road	Ainley Top	Elland.	0.0850	411553	419493	1	Built	N/A
4932	Lower Ground Floor of Bankfoot House	Bankfoot		Hebden Bridge.	0.0116	398566	427302	1	Built	N/A
4933	Outbuilding north of Lower Holme House	Bank House Lane	Luddenden	Halifax.	0.0239	404066	427714	1	Built	N/A
4934	7 Abbots Ladies Homes	Skircoat Green Road		Halifax.	0.0058	409268	423347	1	Built	N/A
4937		36 Lister Lane		Halifax.	0.0255	408958	425140	2	Under Construction	N/A
4941		6 Lentilfield Street	Ovenden	Halifax.	0.0058	408354	426742	1	Built	N/A
4947	Garage at Cherry Tree Farm	School Lane	Illingworth	Halifax.	0.0358	407881	429541	1	Built	N/A
4950	Shrogg House	Wakefield Road	Copley	Halifax.	0.0241	409188	422512	1	Built	N/A
4951	Building east of	3 Upper High Lees	Midgley	Halifax.	0.0273	403405	426635	1	Built	N/A
4952		2 Range Lane		Halifax.	0.0100	409296	425962	4	Built	N/A
4953	Building south west of Station House	Stansfield Mill Lane	Triangle	Sowerby Bridge.	0.0365	404567	421958	1	Built	N/A
4955		5 Stones Drive	Ripponden	Sowerby Bridge.	0.0278	402940	418878	1	Built	N/A
4956	Land north of	4 Wainstalls Lodge Lane	Wainstalls	Halifax.	0.0521	404373	428451	1	Built	N/A
4960	First floor, The Plant Mill	Oldham Road	Ripponden	Sowerby Bridge.	0.0180	403462	418766	2	Built	N/A
4963	First	second and third floors	30 Prescott Street	Halifax.	0.0139	409368	424776	7	Built	N/A
4965	West Vale Baptist Church	Rochdale Road	West Vale	Halifax.	0.0588	409767	421226	11	Built	N/A
4967	Storage building adjacent to	14 Oxford Street		Todmorden.	0.0031	393649	424048	1	Built	N/A
4975	Newfield	Linden Road	Mytholmroyd	Hebden Bridge.	0.0490	400599	426222	1	Built	N/A
4976	Ground floor	277a Whinney Hill Park		Brighouse.	0.0150	414386	424395	1	Built	N/A
4982	Land North West Of	10 Ashville Croft	Pellon	Halifax.	0.1953	406925	426027	4	Under Construction	N/A
4984	Longley Hall Upper Longley	Longley Lane	Norland	Sowerby Bridge.	0.0491	404923	421968	1	Built	N/A
4987	Old Town Methodist Church	Walker Lane	Wadsworth	Hebden Bridge.	0.0467	400103	428056	3	Under Construction	N/A
4989	Winterburn Hill Farm	Winterburn Lane	Warley	Halifax.	0.0832	405296	424750	1	Built	N/A
4996	Garage at	28 Lee Bottom Road		Todmorden.	0.0030	396355	424158	1	Built	N/A

4999	Land Adjacent To Clay House Mills	Clay House Lane	Greetland	Halifax.	0.0351	409552	421468	1	Built	N/A
5005	First and second floors, Former Stafford Arms	Huddersfield Road		Halifax.	0.0171	409445	423486	8	Built	N/A
5007	EMU Building	Manor Heath Road		Halifax.	0.0526	408902	423583	1	Built	N/A
5013	Green Lane Farm	Soaper lane	Shelf	Halifax.	0.2345	412543	429311	3	Under Construction	N/A
5018		1 and 2 Whitwell Grove		Elland.	0.0244	411602	421215	2	Built	N/A
5023	Garage on land North East Of Lightcliffe Royd	Lightcliffe Royd Lane	Barkisland	Halifax.	0.0315	406156	420798	1	Built	N/A
5031	Land South East Of	34 Mons Road		Todmorden.	0.0350	392907	425163	2	Under Construction	N/A
5034	Cherry Tree Farm	School Lane	Illingworth	Halifax.	0.1362	407910	429519	3	Built	N/A
5036		4 Coleridge Street		Halifax.	0.0071	409325	424842	3	Built	N/A
5053	Grey Shaw Syke Bungalow	Ogden Lane	Causeway Foot	Halifax.	0.0768	406785	430898	1	Built	N/A
5054	Attached to garage at Cherry Trees	Knowl Top Road	Lightcliffe	Halifax.	0.0039	413239	425641	1	Built	N/A
5071	Barn at Lower Head Farm	Saddleworth Road	Barkisland	Sowerby Bridge.	0.0649	407130	420828	2	Built	N/A
5073	Oaken Royd Barn	Longley Lane	Norland	Sowerby Bridge.	0.1114	404980	422273	1	Built	N/A
5074		2-4 Burton Street	Holmfild	Halifax.	0.0063	408202	428164	1	Built	N/A
5078	2 Chiserley Stile	Old Mill Ridge	Old Town	Hebden Bridge.	0.0114	400246	428136	1	Built	N/A
5089	Garage at North View	Halifax Road		Todmorden.	0.0027	393831	424121	1	Built	N/A
5097	Basement	32 Northgate	Heptonstall	Hebden Bridge.	0.0068	398759	428136	1	Built	N/A
5106		7 Park Road		Halifax.	0.0530	408634	424895	1	Built	N/A
5138	Junction Inn	133 Moor Bottom Road	Illingworth	Halifax.	0.0659	408040	429060	4	Built	N/A
5173	2nd Floor	4 Leeds Road	Heptonstall	Brighouse.	0.0078	412527	425496	1	Built	N/A
5194		23 Harley Street		Todmorden.	0.0065	393512	424757	1	Built	N/A
5198	Cragg Hall View	1 Clunters	Blackstone Edge Road	Cragg Vale	0.0088	400148	422835	1	Built	N/A

Appendix B

LOG OF CALDERDALE EMPLOYMENT



SITES MODELLLED

Appendix B - Table 2 – Calderdale employment developments, including employment portion of mixed-use

LP_Ref	Property_Name	Road_Street	Locality	Town_Constituency	Local Authority	Total Area	Remaining Size 2017 Ha	Easting	Northing	Use	Status	CSTM Zone
9	Land to the south of premises on	Lowfields Way		Elland	Calderdale	10615	3.03	412117	421772	B1c, B2, B8	LocalPlan	183
21	Land at Ainley Top	Brighouse Road	Ainley Top	Elland	Calderdale	16030	4.58	412037	419773	B1c, B2	LocalPlan	234
25	Land to the south of Dewsbury Road	adj. Copperas Cottages		Elland	Calderdale	5804	1.66	411692	420657	B2, B8	LocalPlan	950
32	Land to the rear of Crosslee PLC	Brighouse Road	Hipperholme	Brighouse	Calderdale	10921	1.94	412858	425042	B1c, B2	LocalPlan	136
59	Land to west of Medical Centre	Stainland Road	West Vale	Elland	Calderdale	1080	0.27	409251	420867	B1	LocalPlan	474
105	Land at	Listers Road	Shibden	Halifax	Calderdale	1038	0.3	410063	425702	B1c, B2	LocalPlan	80
332	Brow Mills Industrial Estate	Brighouse Road	Hipperholme	Brighouse	Calderdale	1836	0.52	412641	424773	B1c, B2	LocalPlan	136
355	Ainleys Industrial Estate	Ainley Bottom		Elland	Calderdale	1156	0.33	411260	420100	B1c, B2, B8	LocalPlan	176
409	Land off	Bob Lane/Hubert Street	Highroad Well	Halifax	Calderdale	2135	0.71	406966	425295	B1c	LocalPlan	67
472	Land off	Lilly Lane		Halifax	Calderdale	2135	0.61	409765	424843	B1c, B2, B8	LocalPlan	117
585	Land west of	Anchor Place		Brighouse	Calderdale	2800	0.8	415807	421853	B1c	LocalPlan	154
805	Holmfield railway line	Holdsworth Road	Holmfield	Halifax	Calderdale	4760	1.36	408671	429129	Unspecified Employment	LocalPlan	70
960	Land off	South Lane		Elland	Calderdale	20511	5.86	410915	420055	B1c, B2, B8	LocalPlan	176
976	Clarence Mill	Pellon lane		Halifax	Calderdale	1506	0.43	408104	425701	B1c, B2	LocalPlan	53
1018	West of Holmfield Industrial Estate	Riley Lane & Holdsworth Road	Holmfield	Halifax	Calderdale	15086	4.31	408214	429352	Mixed B uses	LocalPlan	70
1133	Land off	Sedbergh Road and Siddal New Road		Halifax	Calderdale	5000	2.85	409794	424226	B1, B2	LocalPlan	85
1134	Shaw Lodge Mill Complex	Shaw Lane		Halifax	Calderdale	4938	1.14	409627	424123	B1a, B1c	LocalPlan	85
1203	Star Garage	Wakefield Road	Copley	Halifax	Calderdale	1820	0.52	408998	422492	Any B uses	LocalPlan	90
1217	Land and Premises	Holmfield Industrial Estate	Holmfield	Halifax	Calderdale	4900	1.4	408466	428978	Any B uses	LocalPlan	70
1218	Land to South east of	Holmfield Industrial Estate	Holmfield	Halifax	Calderdale	1680	0.49	408496	428845	Unspecified Employment	LocalPlan	70
1219	North of Holmfield Industrial Estate	Holmfield Industrial Estate		Halifax	Calderdale	21771	6.22	408491	429502	Any B uses	LocalPlan	70
1220	Adjacent Lloyds	Wakefield Road	Copley	Sowerby Bridge	Calderdale	20413	3.55	407510	423712	B1a, B1b, B8	LocalPlan	48
1231		Shay Lane	Ovenden	Halifax	Calderdale	4166	1.19	408036	427869	B2, B8	LocalPlan	243
1232	Land at	Wakefield Road/Clifton Common	Clifton	Brighouse	Calderdale	49177	21.37	415606	422769	Mixed B uses	LocalPlan	240
1433	Land off	Old Lane		Halifax	Calderdale	840	0.24	408454	426690	B1c	LocalPlan	337
1443	Land between	Wistons Lane and Jubilee Way		Elland	Calderdale	1756	0.5	410989	421287	B1a, B1	LocalPlan	481
1618	Land west of	Huddersfield Road		Brighouse	Calderdale	24430	6.98	414350	420864	Mixed B uses	LocalPlan	454
1622	Top Land		Cragg Vale	Mytholmroyd	Calderdale	29330	7.63	401046	425472	Unspecified Employment	LocalPlan	199
1640	Zodian House	Station Road		Sowerby Bridge	Calderdale	4200	1.32	406330	423403	Unspecified Employment	LocalPlan	124
1223	Lowfields	Lacy Way		Elland	Calderdale	7911	2.26	411593	421912	Any B uses	LocalPlan	183
264	Car Park Between	Well Lane / King Street		Halifax	Calderdale	3600	0.39	409709	425334	A, B1, C1 C2, C3, C4,D1	LocalPlan	707
289	Land off	King Cross Street		Halifax	Calderdale	2150	0.45	408935	424976	A, B1, C1 C3, C4	LocalPlan	126
370	Land off	Armitage Road	King Cross	Halifax	Calderdale	520	0.26	407742	424245	A, B1a, D1	LocalPlan	103
509	Land and Buildings opposite B & M	Dewsbury Road		Elland	Calderdale	4908	1.9	411105	420825	A, B1, B2, D1	LocalPlan	178
579	126- 128	Bradford Road		Brighouse	Calderdale	2000	0.42	414616	423634	B1, C3,D	LocalPlan	140



1088	West Vale Works	Stainland Road, West Vale	Greetland	Elland	Calderdale	3660	0.47	409491	421077	A, B1, C1, C3, D1	LocalPlan	474
1170		Mulcture Hall Road		Halifax	Calderdale	3000	2.48	409795	425381	A1,A2, B1, C1, C2, C3, C4, D1	LocalPlan	119
1431	Former Mayfield Garage	Queens Road	King Cross	Halifax	Calderdale	3480	0.87	407891	424672	A, B1, B2, C1,C2, C3,C4, D1	LocalPlan	57
1632		New Road		Halifax	Calderdale	4680	1.56	409539	424893	Unspecified Mixed Use	LocalPlan	708

Appendix C

LOG OF BRADFORD & KIRKLEES



DEVELOPMENT SITES MODELLLED

Appendix C - Table 3 – Bradford and Kirklees residential developments, including completed sites and residential portion of mixed-use

LP_Ref	Road_Street	Locality	Town Constituency	Local Authority	Easting	Northing	2014 to 2032	Status	CSTM Zone
TH/001	Thornton Road		Thornton.	Bradford	408904	432775	31	Built	32
QB/002	Albert Road		Queensbury.	Bradford	409840	430630	40	Pending	801
QB/009	Hazelhurst Quarry	Long Lane	Queensbury.	Bradford	409906	429431	114	Built	801
QB/021	Sandbeds	Back Lyon Street	Queensbury.	Bradford	410652	430359	10	Built	801
DH/015	Halifax Road	Denholme Gate	Denholme.	Bradford	406954	431928	10	Built	802
SW/026	Reevy Road west	Buttershaw	Bradford South West.	Bradford	413447	429738	29	Pending	956
SW/100	Stanbeck Gardens	Buttershaw	Bradford South West.	Bradford	412913	429525	11	Pending	956
SW/122	Church Street	Buttershaw	Bradford South West.	Bradford	413461	429223	5	Pending	956
SE/005	Cleckheaton Road		Bradford South East.	Bradford	416538	428270	16	Pending	957
SE/088	1-2 Sugan Street	Low Moor	Bradford South East.	Bradford	416759	427891	3	Pending	957
SE/038A	St Marys Square	Wyke	Bradford South East.	Bradford	415058	426616	8	Built	959
SE/013	Railway Street		Bradford South East.	Bradford	415214	426829	21	Pending	960
SW/064	Common Road	Low Moor	Bradford South West.	Bradford	415133	428686	57	Pending	960
SW/134	Meadway	Wibsey	Bradford South West.	Bradford	413910	428659	7	Pending	960
SW/062	Royds Hall Lane	Woodside	Bradford South West.	Bradford	414367	428941	97	Built	961
SW/063	Eaglesfield drive	Woodside	Bradford South West.	Bradford	414031	428995	47	Built	961
SW/065	Lingdale Road	Woodside	Bradford South West.	Bradford	414631	428542	25	Pending	961
SW/067	Halifax Road/Western Way	Woodside	Bradford South West.	Bradford	413941	429079	6	Built	961
SW/091	Trenholme Avenue	Low Moor	Bradford South West.	Bradford	414686	428769	6	Built	961
SW/071	Cooper Lane	Buttershaw	Bradford South West.	Bradford	412794	429827	8	Built	962
SW/116	Polt Farm - Dan Lane/Dunnock Avenue		Bradford South West.	Bradford	412119	430427	12	Pending	962
SW/136	Roy Road	Buttershaw	Bradford South West.	Bradford	412832	430357	5	Built	962
H2652	-	-	-	Kirklees	408830	418116	29	Kirklees Local Plan	903
H738	-	-	-	Kirklees	409041	415992	27	Kirklees Local Plan	903
H116	-	-	-	Kirklees	410280	416731	125	Kirklees Local Plan	904
H303	-	-	-	Kirklees	409518	416246	18	Kirklees Local Plan	904
H779	-	-	-	Kirklees	409861	416396	20	Kirklees Local Plan	904
H276	-	-	-	Kirklees	418069	418576	33	Kirklees Local Plan	908
H121	-	-	-	Kirklees	411167	417658	15	Kirklees Local Plan	913
H202	-	-	-	Kirklees	410666	417785	19	Kirklees Local Plan	913
H292	-	-	-	Kirklees	411207	417270	27	Kirklees Local Plan	913
H789	-	-	-	Kirklees	411372	417431	26	Kirklees Local Plan	913
H1694	-	-	-	Kirklees	411746	418052	20	Kirklees Local Plan	916
H790	-	-	-	Kirklees	411443	418568	29	Kirklees Local Plan	916
H706	-	-	-	Kirklees	412083	418926	392	Kirklees Local Plan	917
H1657	-	-	-	Kirklees	415915	419538	88	Kirklees Local Plan	920
H809	-	-	-	Kirklees	414864	419240	162	Kirklees Local Plan	922
H205	-	-	-	Kirklees	419479	421429	21	Kirklees Local Plan	923



H242	-	-	-	Kirklees	418464	422696	15	Kirklees Local Plan	924
H198	-	-	-	Kirklees	417813	423784	125	Kirklees Local Plan	925
H2584	-	-	-	Kirklees	418616	423960	14	Kirklees Local Plan	925
H2645	-	-	-	Kirklees	418885	425019	48	Kirklees Local Plan	925
H1983	-	-	-	Kirklees	418907	425525	48	Kirklees Local Plan	926
H708	-	-	-	Kirklees	418613	424778	53	Kirklees Local Plan	926
H762	-	-	-	Kirklees	418384	425793	58	Kirklees Local Plan	926
H201	-	-	-	Kirklees	410347	418354	21	Kirklees Local Plan	914
H623	-	-	-	Kirklees	411151	419114	37	Kirklees Local Plan	914
H519	-	-	-	Kirklees	413696	420223	377	Kirklees Local Plan	918
H1656	-	-	-	Kirklees	416873	420491	18	Kirklees Local Plan	919
H1747	-	-	-	Kirklees	415991	420898	1577	Kirklees Local Plan	919
H351	-	-	-	Kirklees	415184	420518	381	Kirklees Local Plan	919
H162	-	-	-	Kirklees	418097	425345	22	Kirklees Local Plan	927
H1704	-	-	-	Kirklees	417072	424630	56	Kirklees Local Plan	927
H2066	-	-	-	Kirklees	417127	424721	17	Kirklees Local Plan	927
H640	-	-	-	Kirklees	418244	425236	24	Kirklees Local Plan	927
H87	-	-	-	Kirklees	417460	420646	30	Kirklees Local Plan	942
H734	-	-	-	Kirklees	414358	419193	68	Kirklees Local Plan	943
H49a	-	-	-	Kirklees	416788	425703	34	Kirklees Local Plan	945
H810	-	-	-	Kirklees	416507	425077	17	Kirklees Local Plan	945
H508	-	-	-	Kirklees	417894	425970	157	Kirklees Local Plan	946
MX1929	-	-	-	Kirklees	419631	421746	166	Kirklees Local Plan	923
MX1911	-	-	-	Kirklees	410707	418701	533	Kirklees Local Plan	914
MX3349	-	-	-	Kirklees	418390	425036	223	Kirklees Local Plan	927

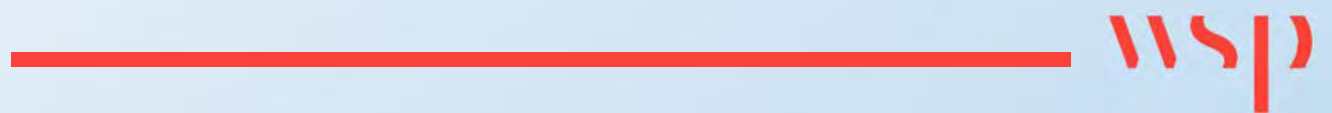
Appendix C - Table 4 – Bradford and Kirklees employment developments, including employment portion of mixed-use

LP_Ref	Property_Name	Road_Street	Locality	Town_Constituency	Local_Authority	Total_Area	Easting	Northing	Use	Status	CSTM_Zone
TH/021	Former Imperial restaurant	Thornton Road		Thornton	Bradford	0.5	408182	432611	B1, B2, B8	Pending	32
SE/148		Land at NuFarm	Wyke	Bradford South East	Bradford	5.34	416587	427095	B2	Pending	958
E1832c	Employment				Kirklees	162187	418134	421390	B1, B2, B8	Kirklees Local Plan	924
E1836	Employment				Kirklees	15156	415626	420134	B1	Kirklees Local Plan	919
E1831	Employment				Kirklees	41020	417601	426233	B2	Kirklees Local Plan	945
MX1929	MixedUse				Kirklees	21538	419631	421746	B1, B2, B8	Kirklees Local Plan	923
MX1911	MixedUse				Kirklees	43325	410707	418701	B2	Kirklees Local Plan	914
MX3349	MixedUse				Kirklees	1820	418390	425036	B1, B2, B8	Kirklees Local Plan	927

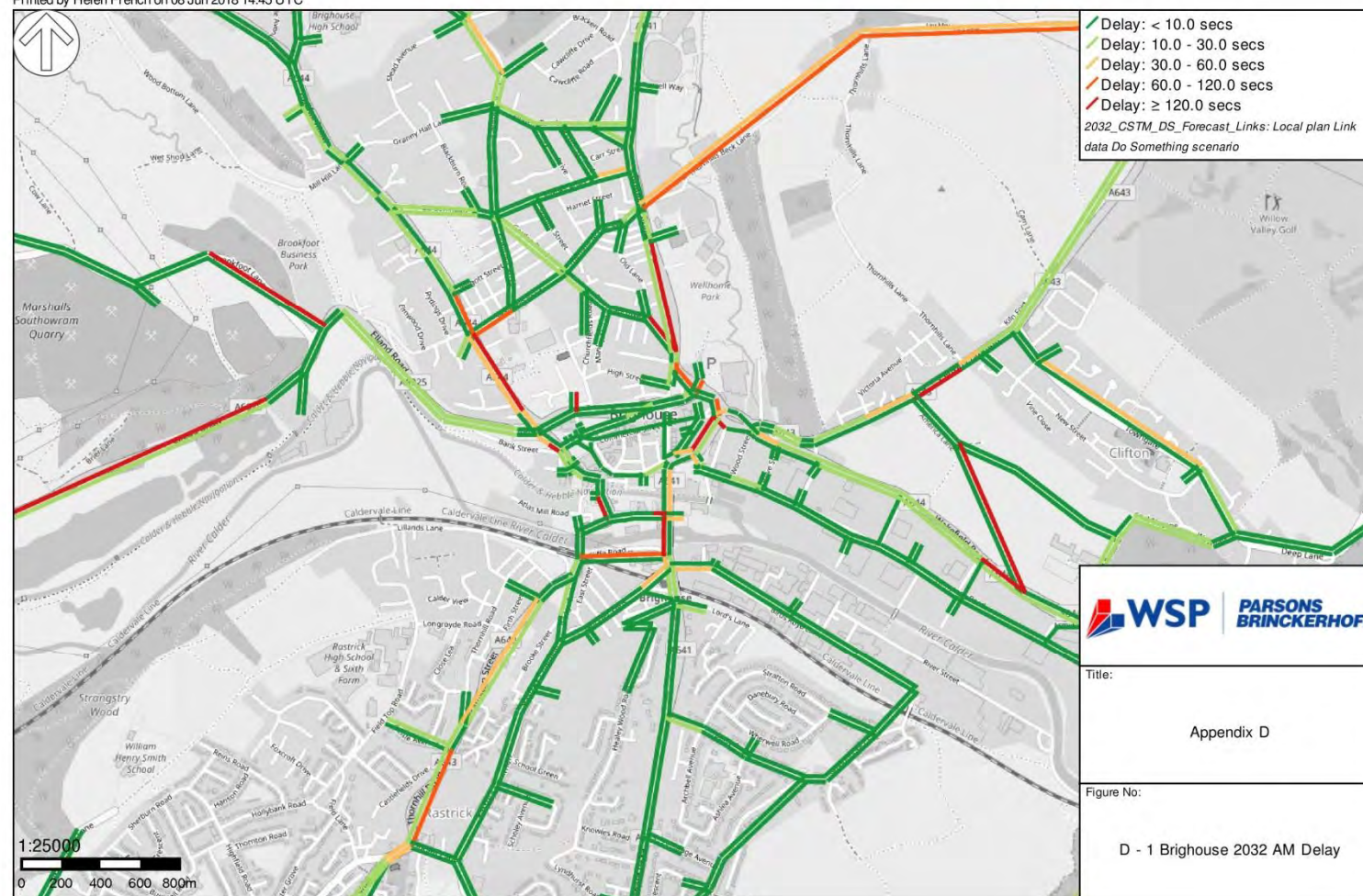
Site E1832c – Cooper Bridge, is no longer being taken forward as a site within the Kirklees Local Plan.

Appendix D

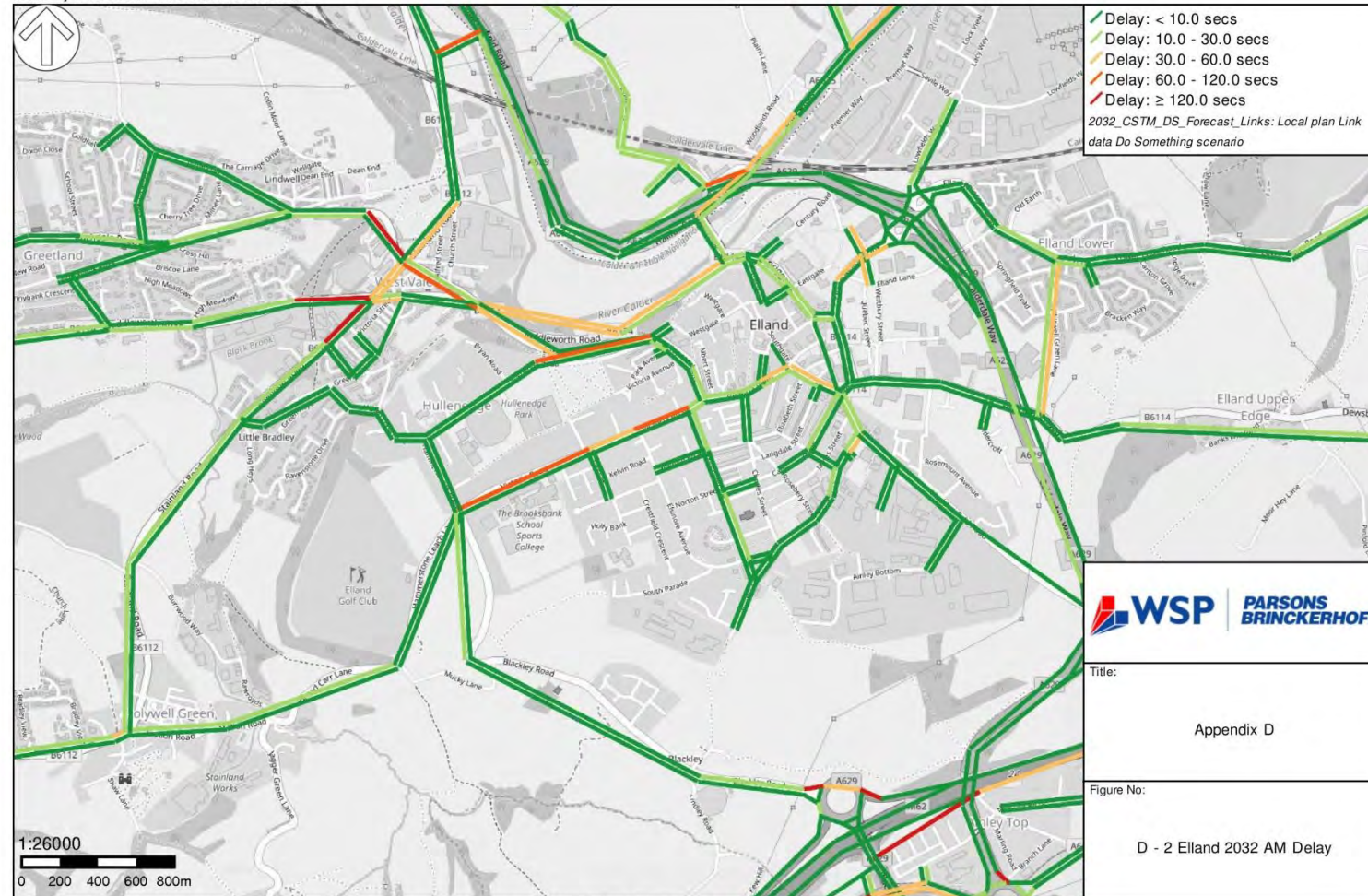
AM 2032 MODELLED DELAYS



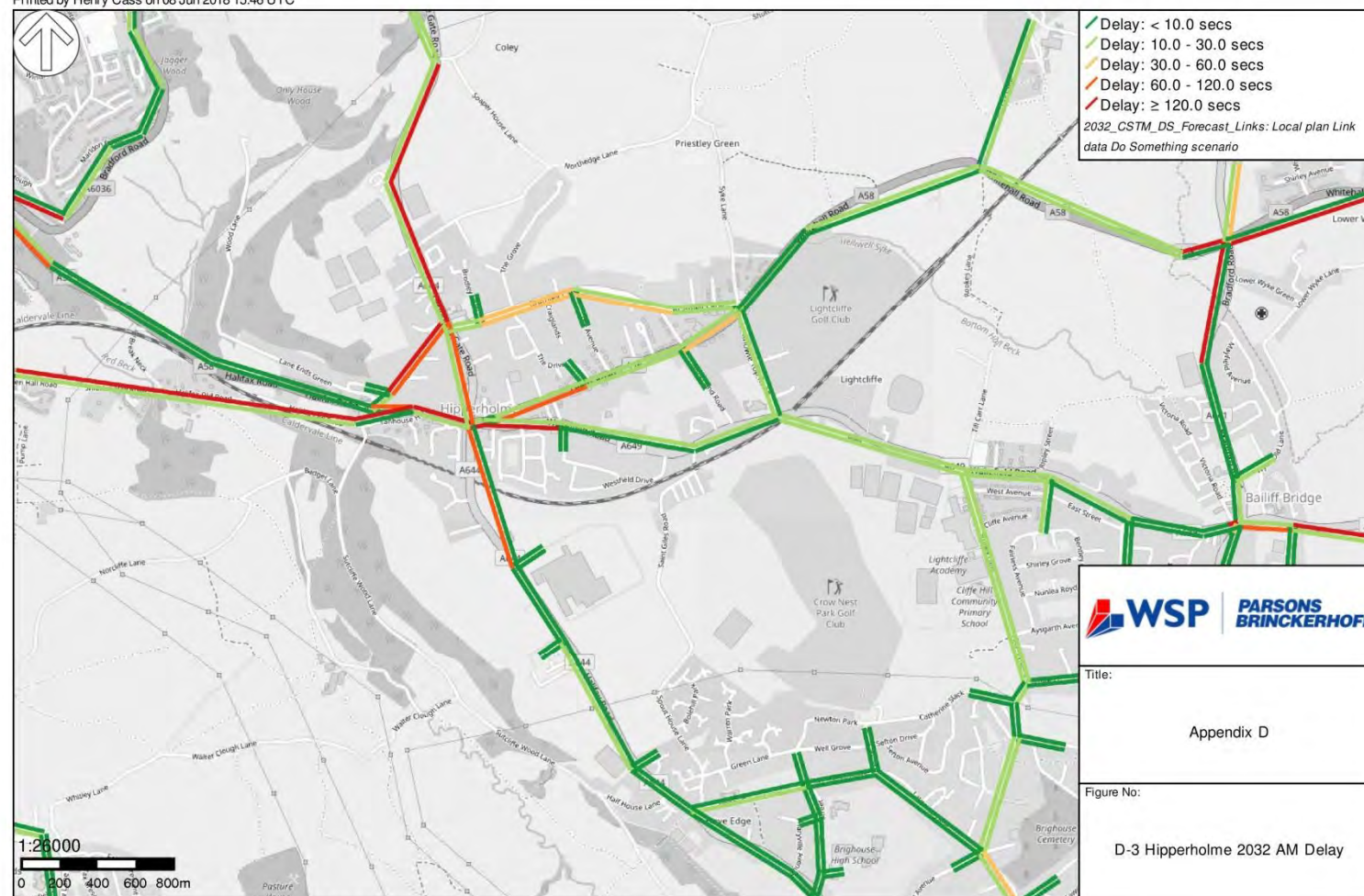
Printed by Helen French on 08 Jun 2018 14:45 UTC



Printed by Helen French on 08 Jun 2018 15:08 UTC

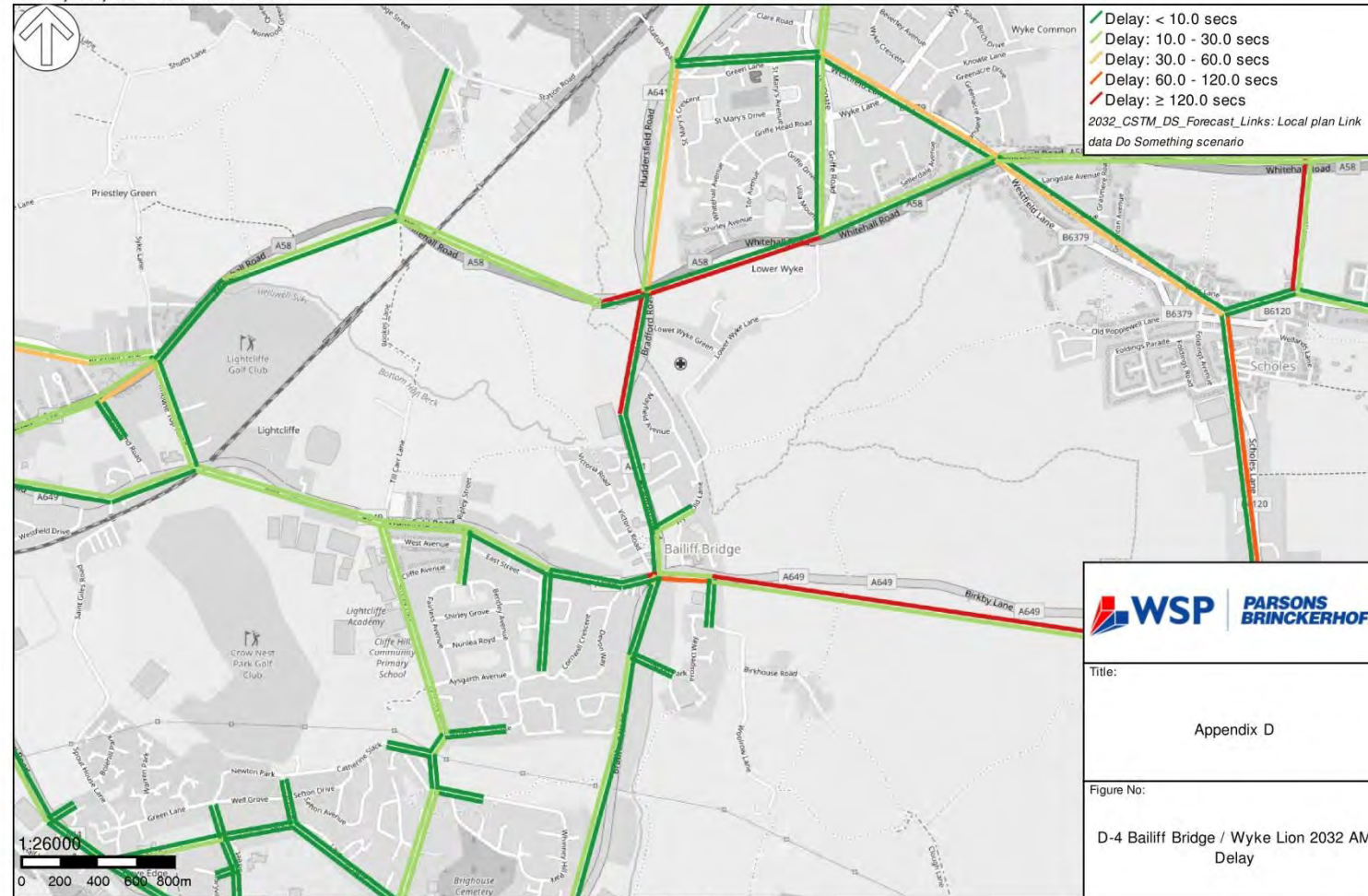


Printed by Henry Cass on 08 Jun 2018 15:46 UTC



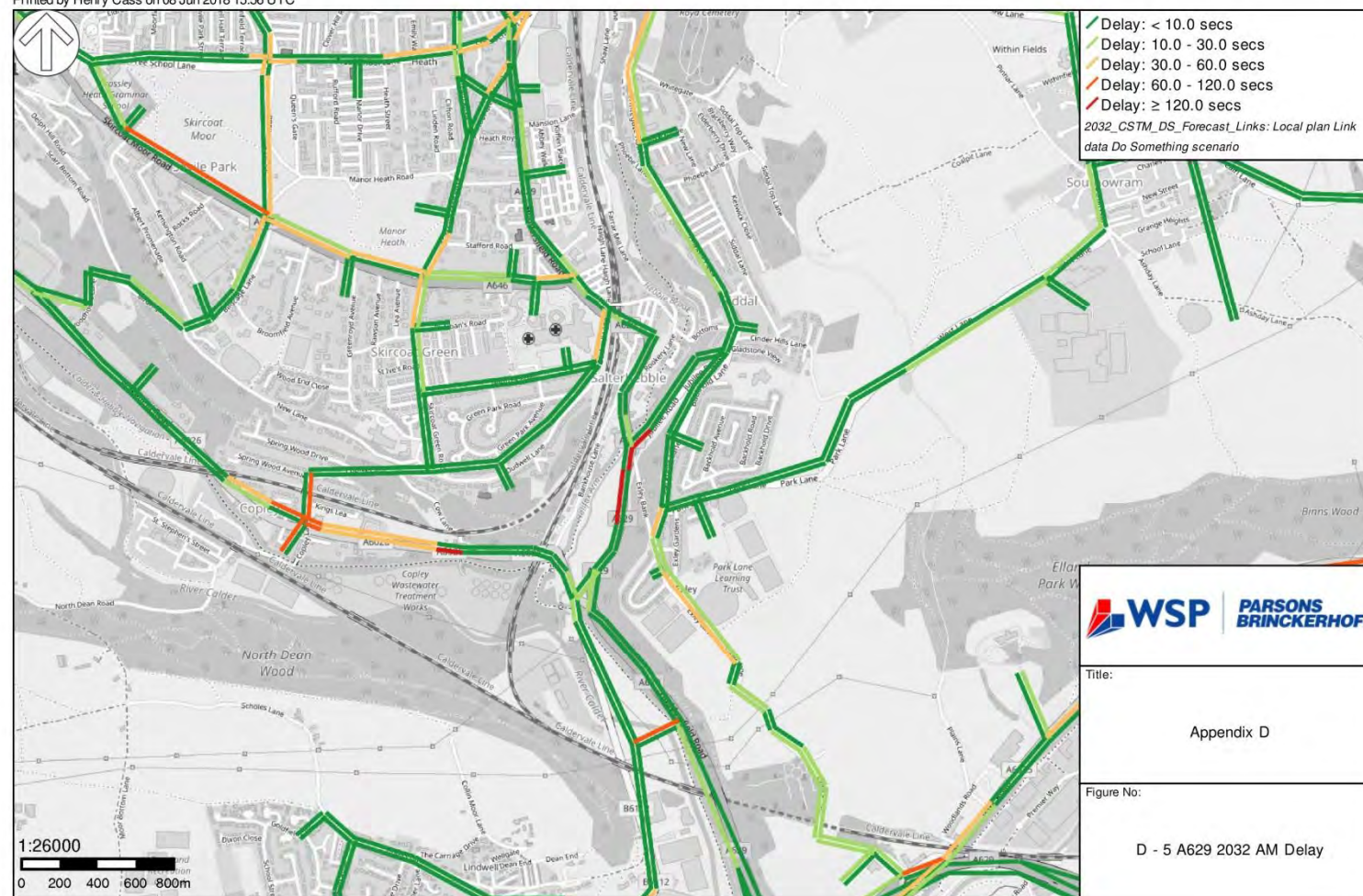
© OpenStreetMap contributors Contains Ordnance Survey data © Crown copyright and database right 2010-15; WSP | Parsons Brinckerhoff

Printed by Henry Cass on 08 Jun 2018 15:49 UTC



© OpenStreetMap contributors Contains Ordnance Survey data © Crown copyright and database right 2010-15; WSP | Parsons Brinckerhoff

Printed by Henry Cass on 08 Jun 2018 15:56 UTC



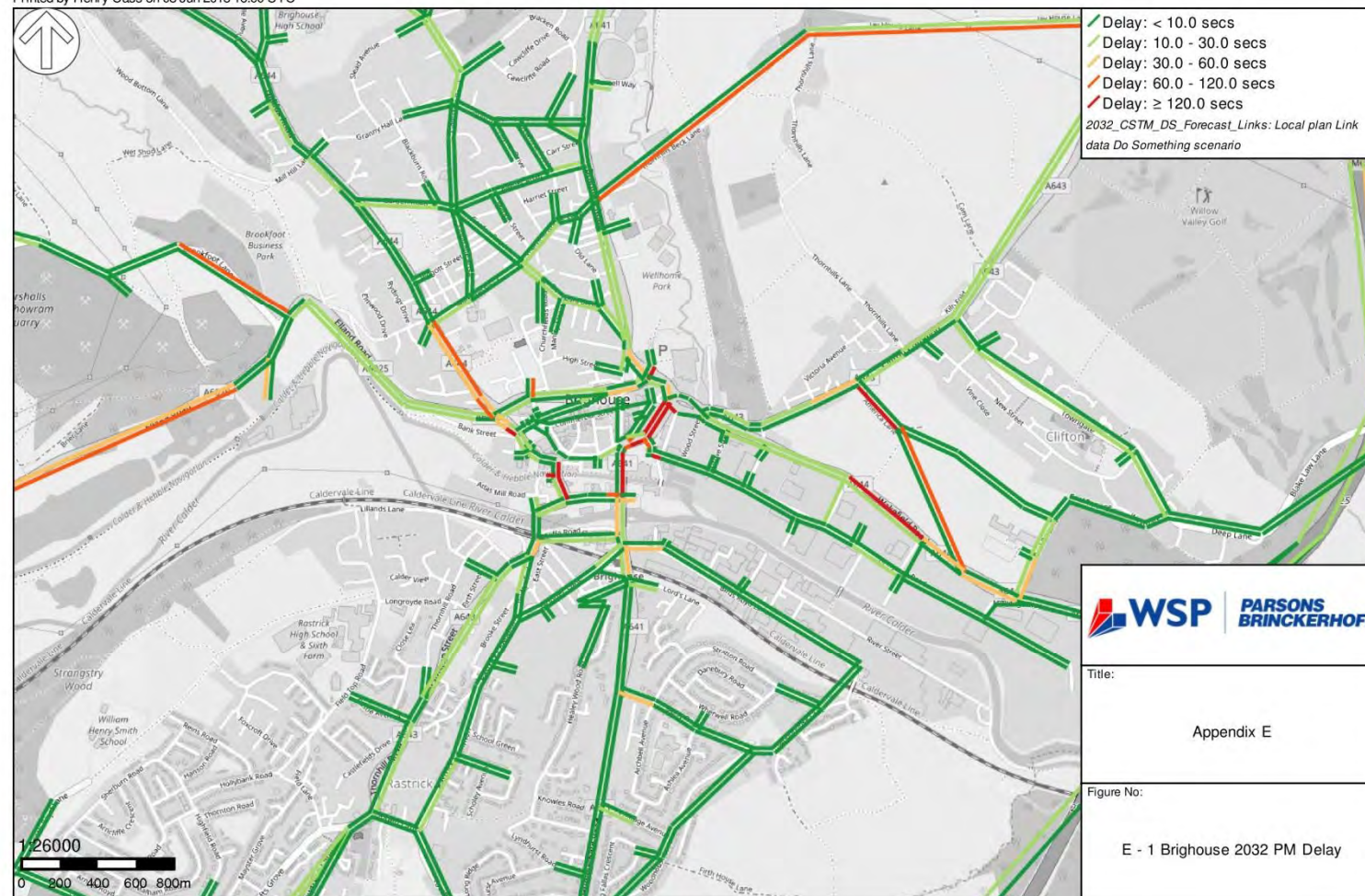
© OpenStreetMap contributors Contains Ordnance Survey data © Crown copyright and database right 2010-15; WSP | Parsons Brinckerhoff

Appendix E

PM 2032 MODELLED DELAYS

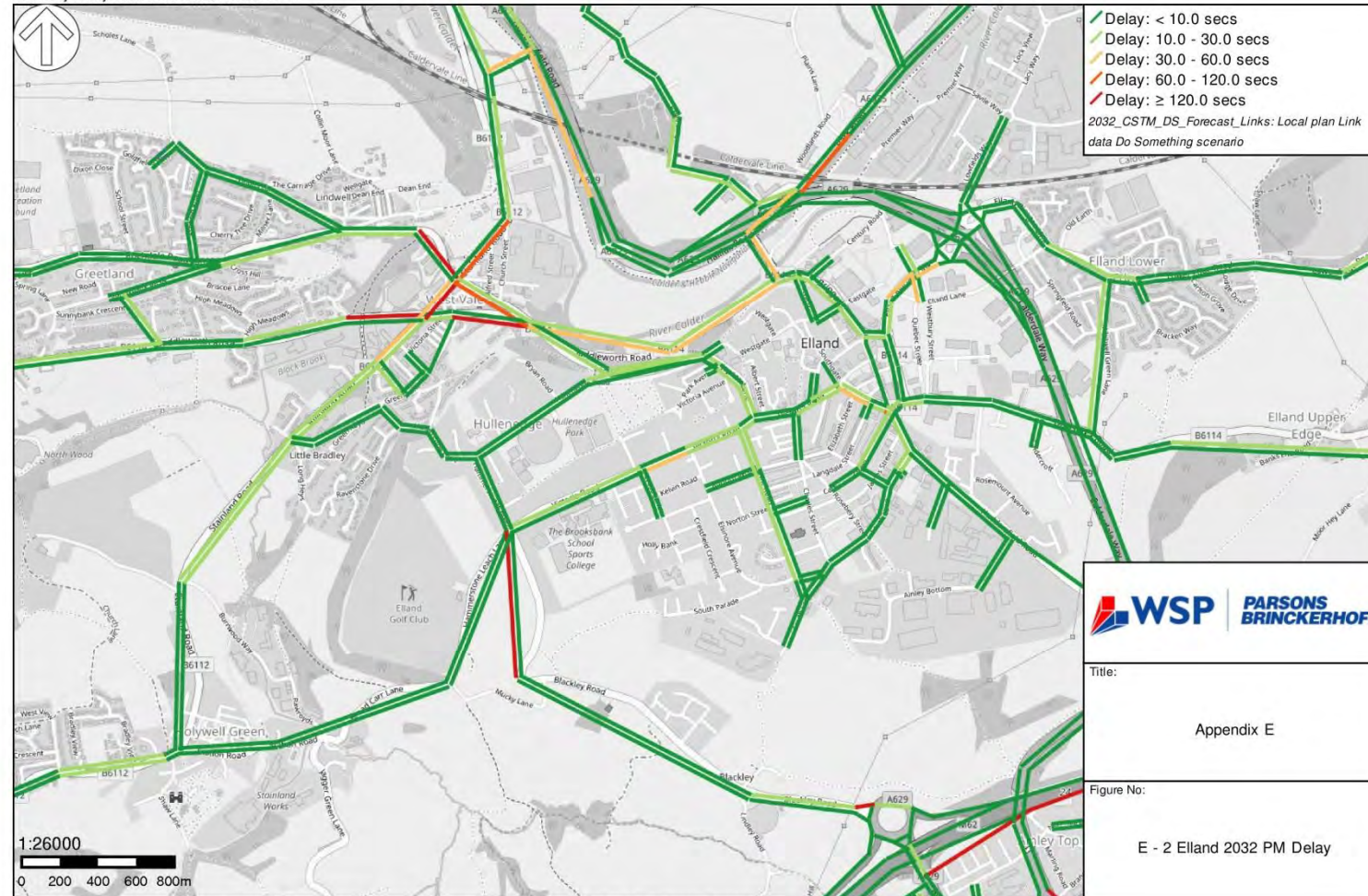


Printed by Henry Cass on 08 Jun 2018 16:00 UTC



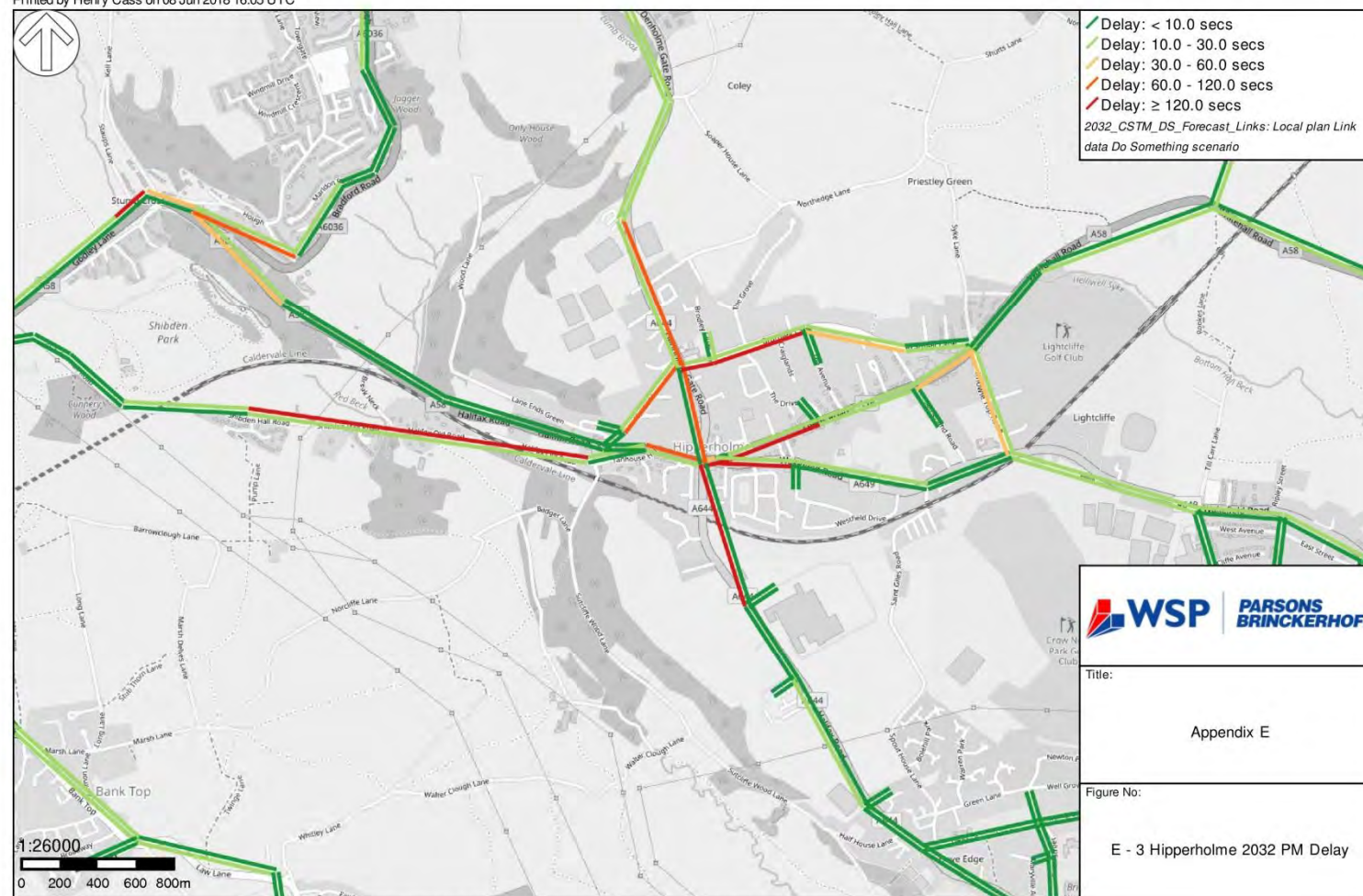
© OpenStreetMap contributors Contains Ordnance Survey data © Crown copyright and database right 2010-15; WSP | Parsons Brinckerhoff

Printed by Henry Cass on 08 Jun 2018 16:01 UTC



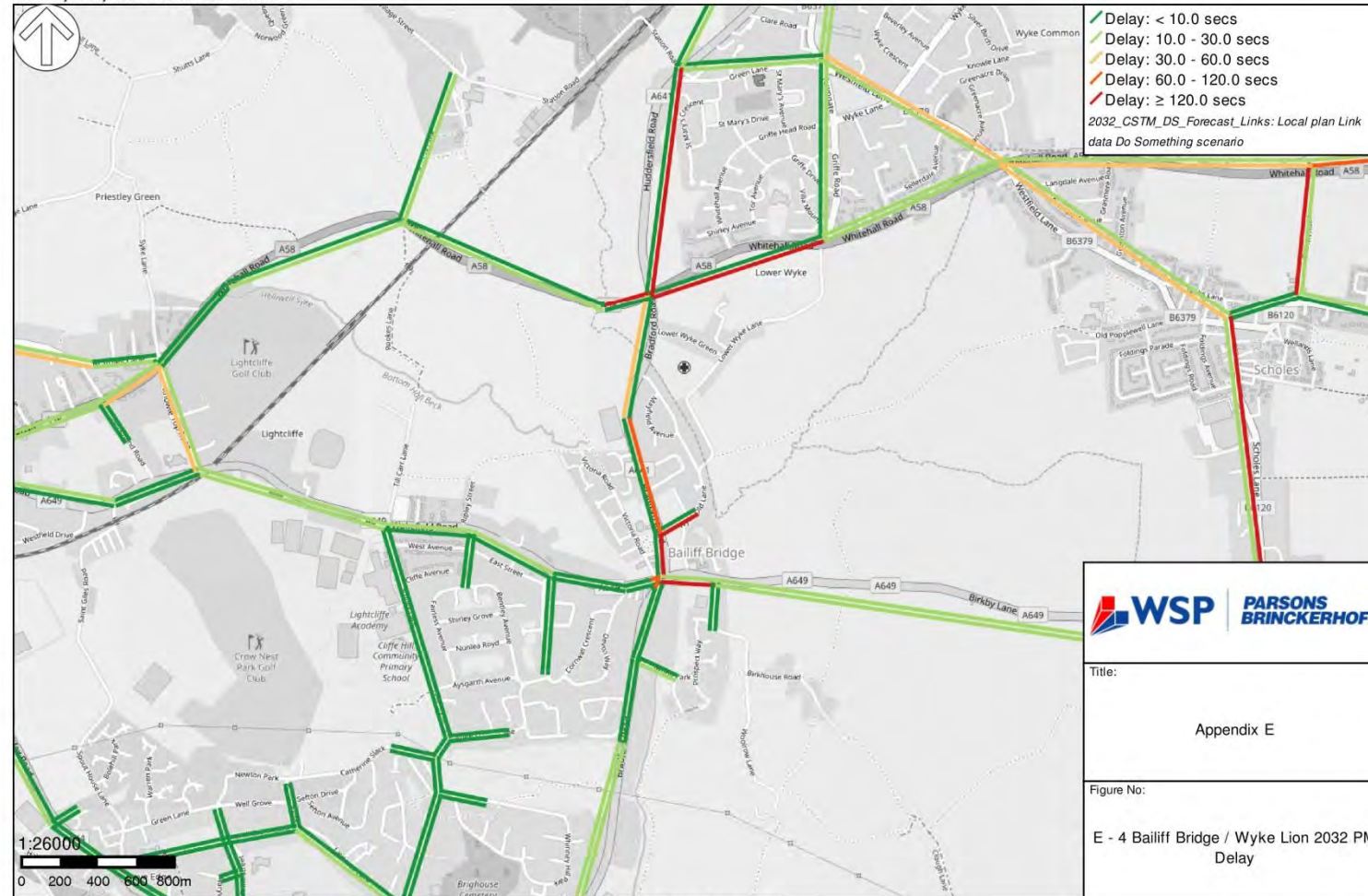
© OpenStreetMap contributors Contains Ordnance Survey data © Crown copyright and database right 2010-15; WSP | Parsons Brinckerhoff

Printed by Henry Cass on 08 Jun 2018 16:05 UTC



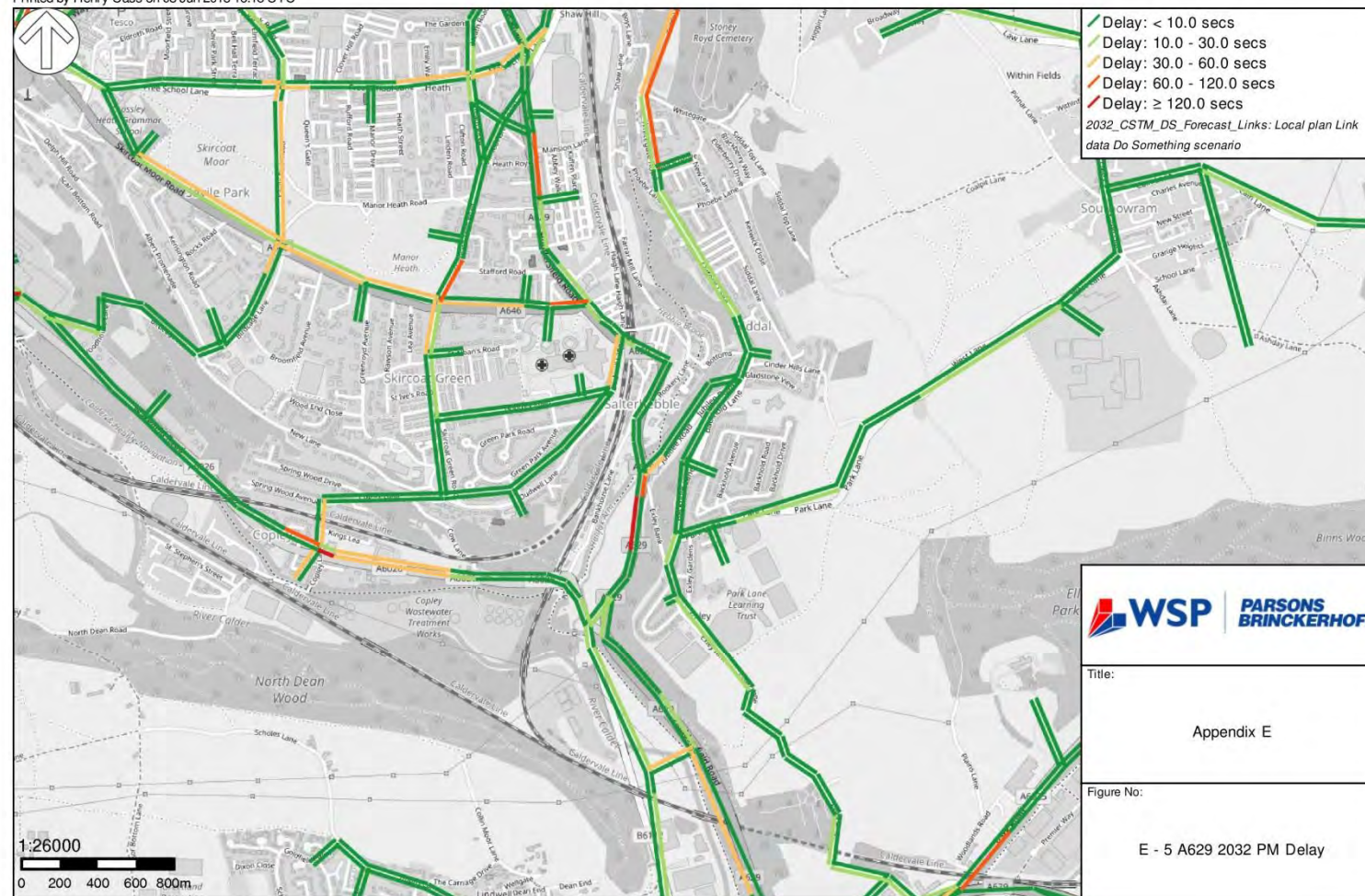
© OpenStreetMap contributors Contains Ordnance Survey data © Crown copyright and database right 2010-15; WSP | Parsons Brinckerhoff

Printed by Henry Cass on 08 Jun 2018 16:08 UTC



© OpenStreetMap contributors Contains Ordnance Survey data © Crown copyright and database right 2010-15; WSP | Parsons Brinckerhoff

Printed by Henry Cass on 08 Jun 2018 16:18 UTC



© OpenStreetMap contributors Contains Ordnance Survey data © Crown copyright and database right 2010-15; WSP | Parsons Brinckerhoff

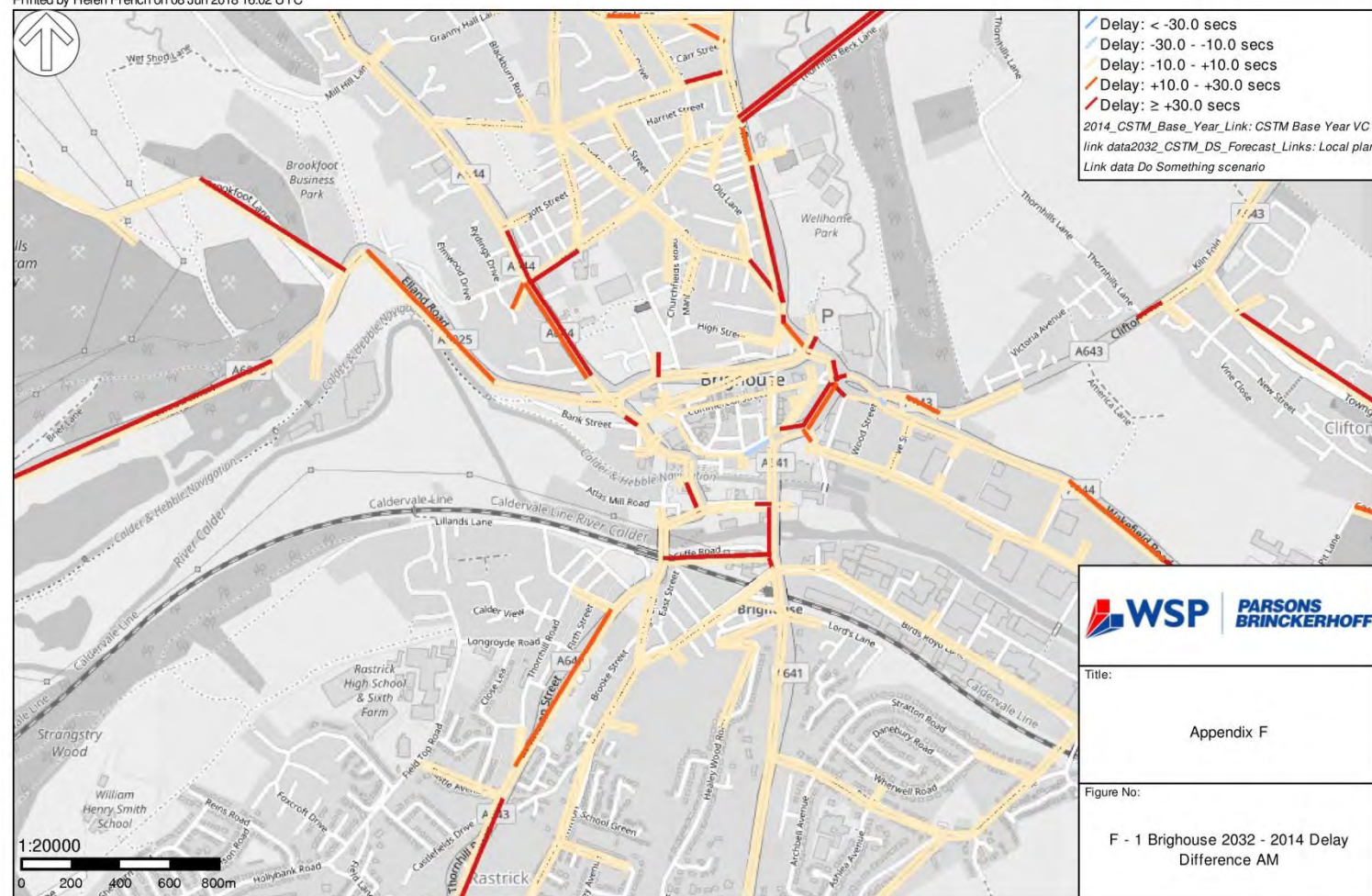
Appendix F

CHANGE IN MODELLED DELAY

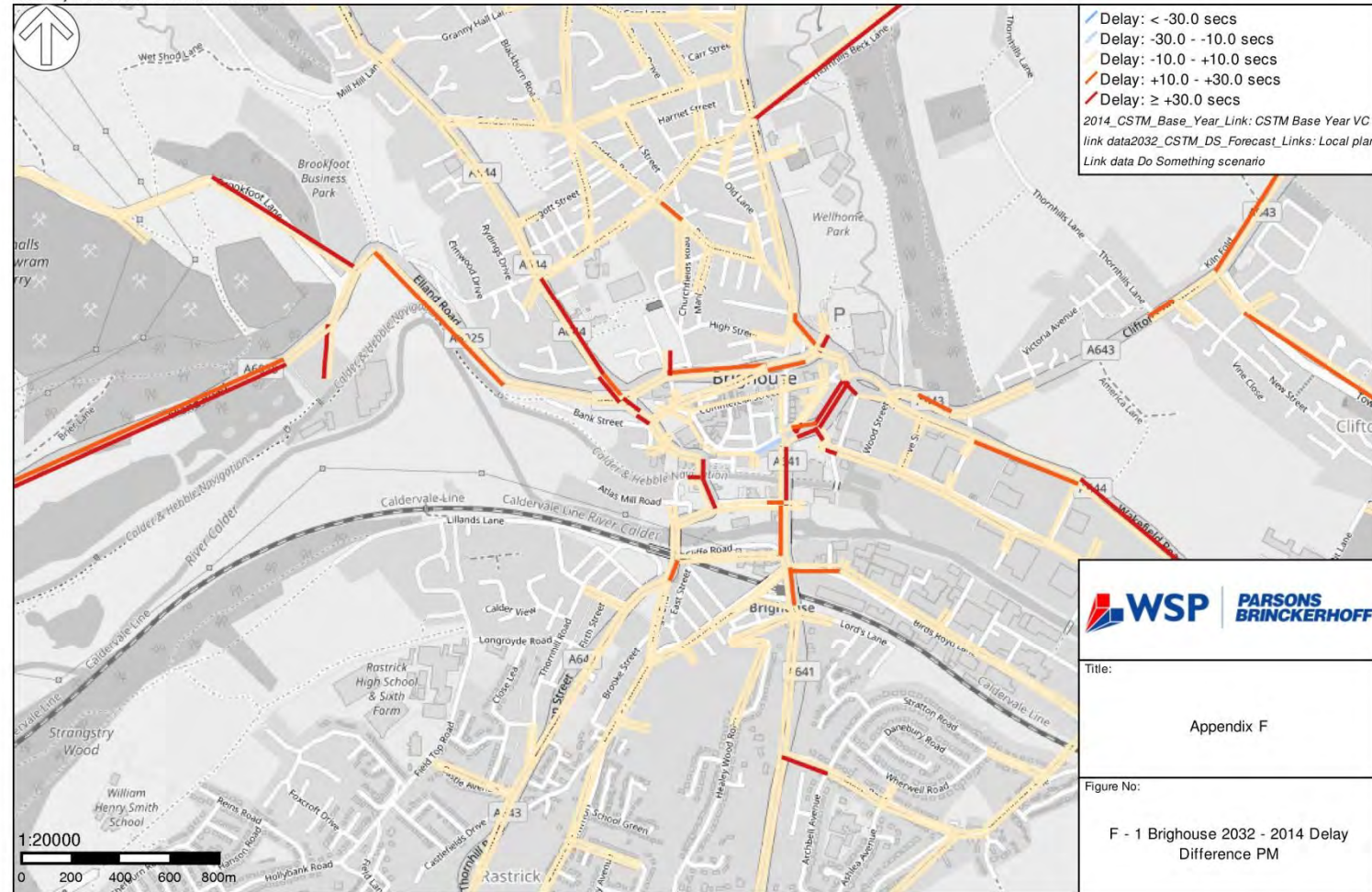
BETWEEN 2014 AND 2032



Printed by Helen French on 08 Jun 2018 16:02 UTC

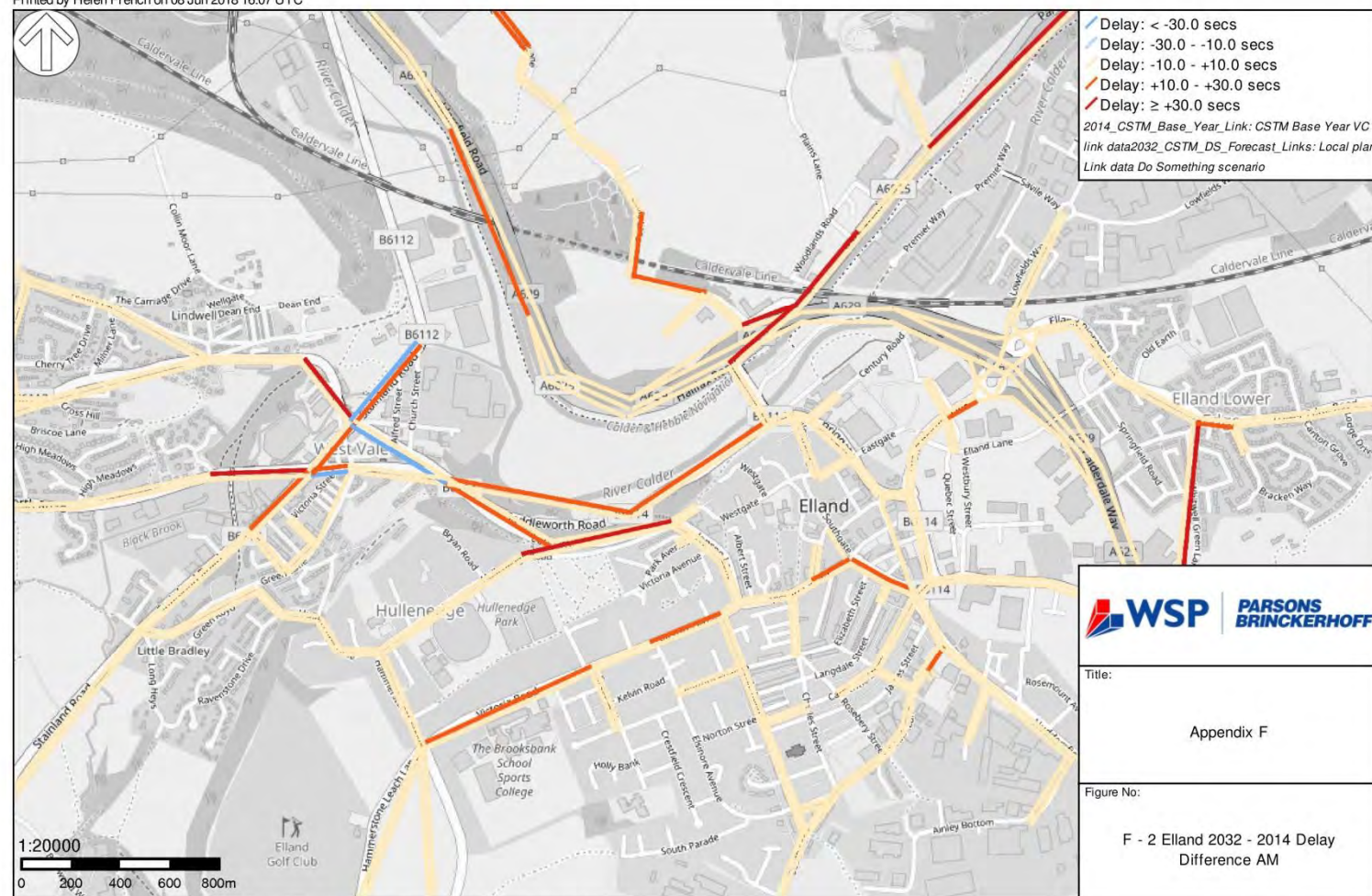


Printed by Helen French on 08 Jun 2018 16:04 UTC

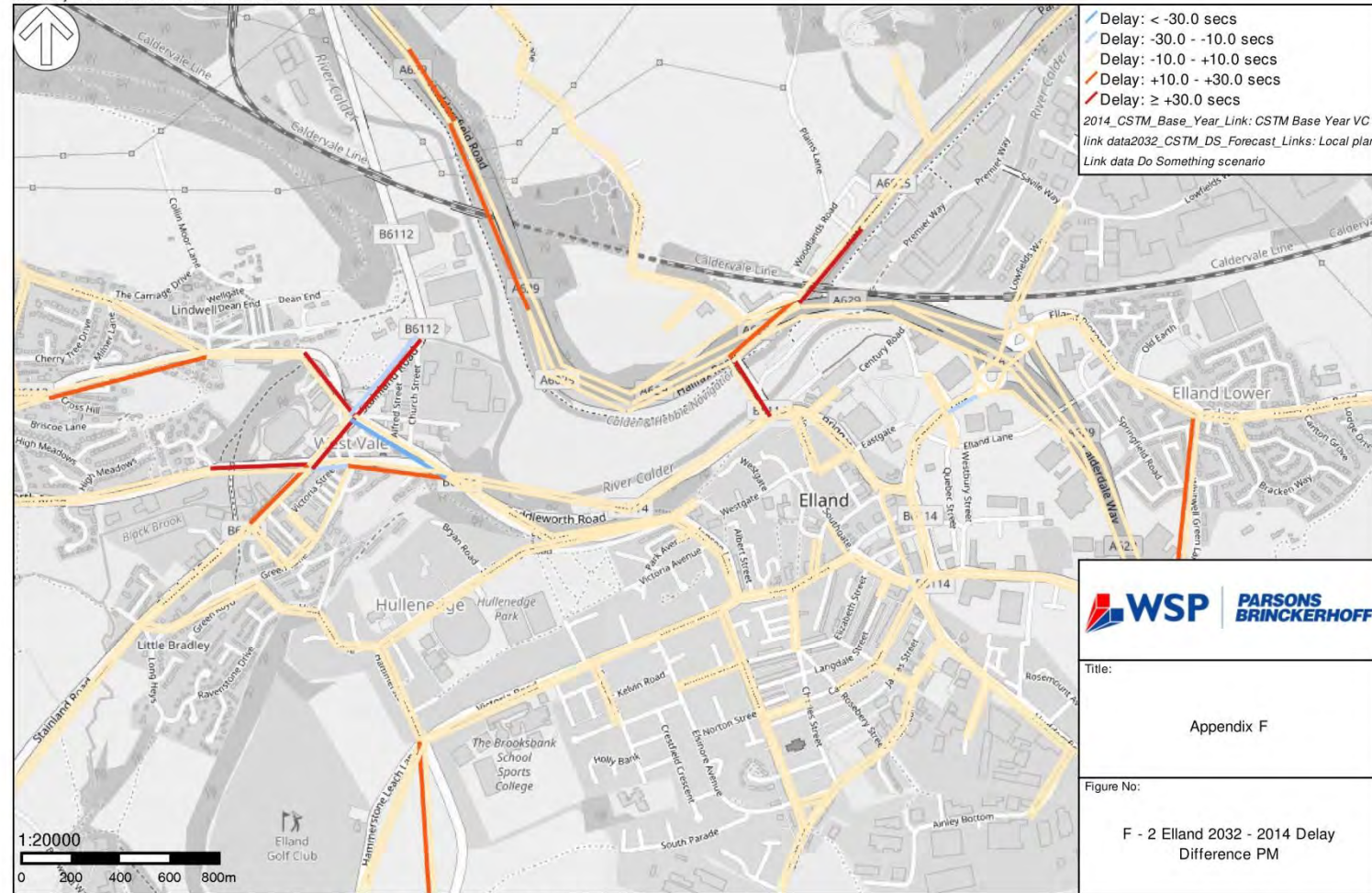


© OpenStreetMap contributors Contains Ordnance Survey data © Crown copyright and database right 2010-15; WSP | Parsons Brinckerhoff

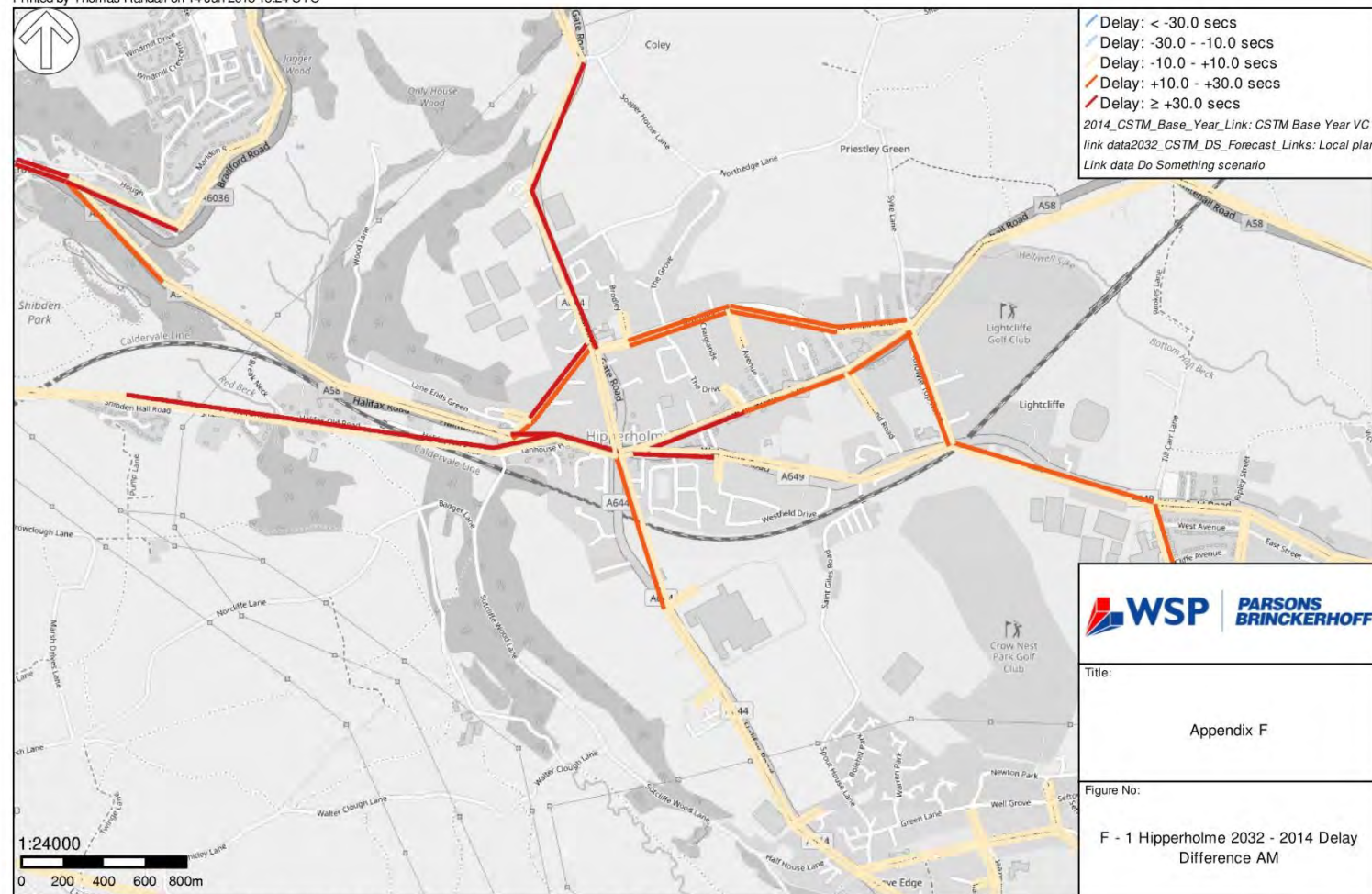
Printed by Helen French on 08 Jun 2018 16:07 UTC



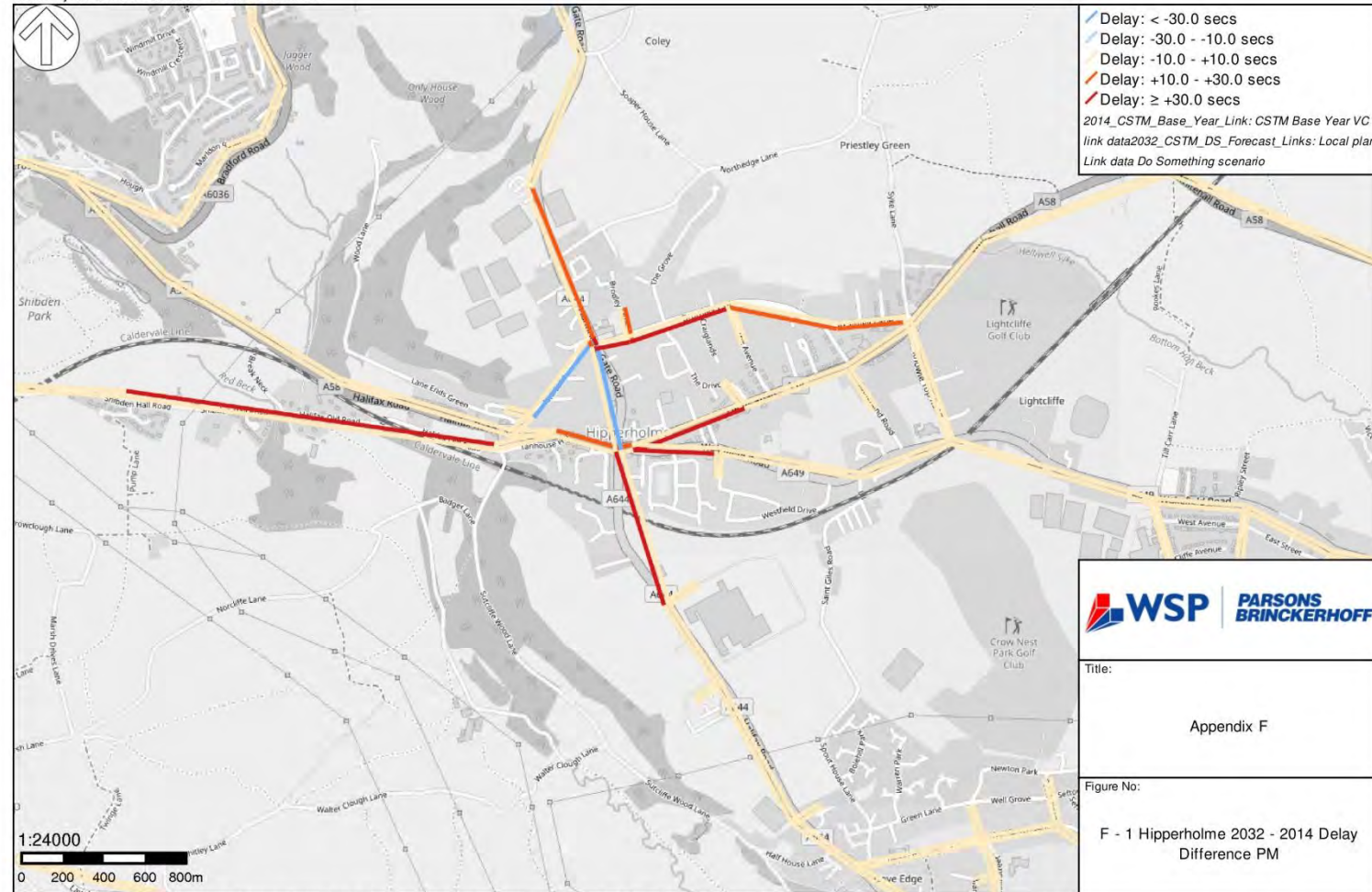
Printed by Helen French on 08 Jun 2018 16:06 UTC



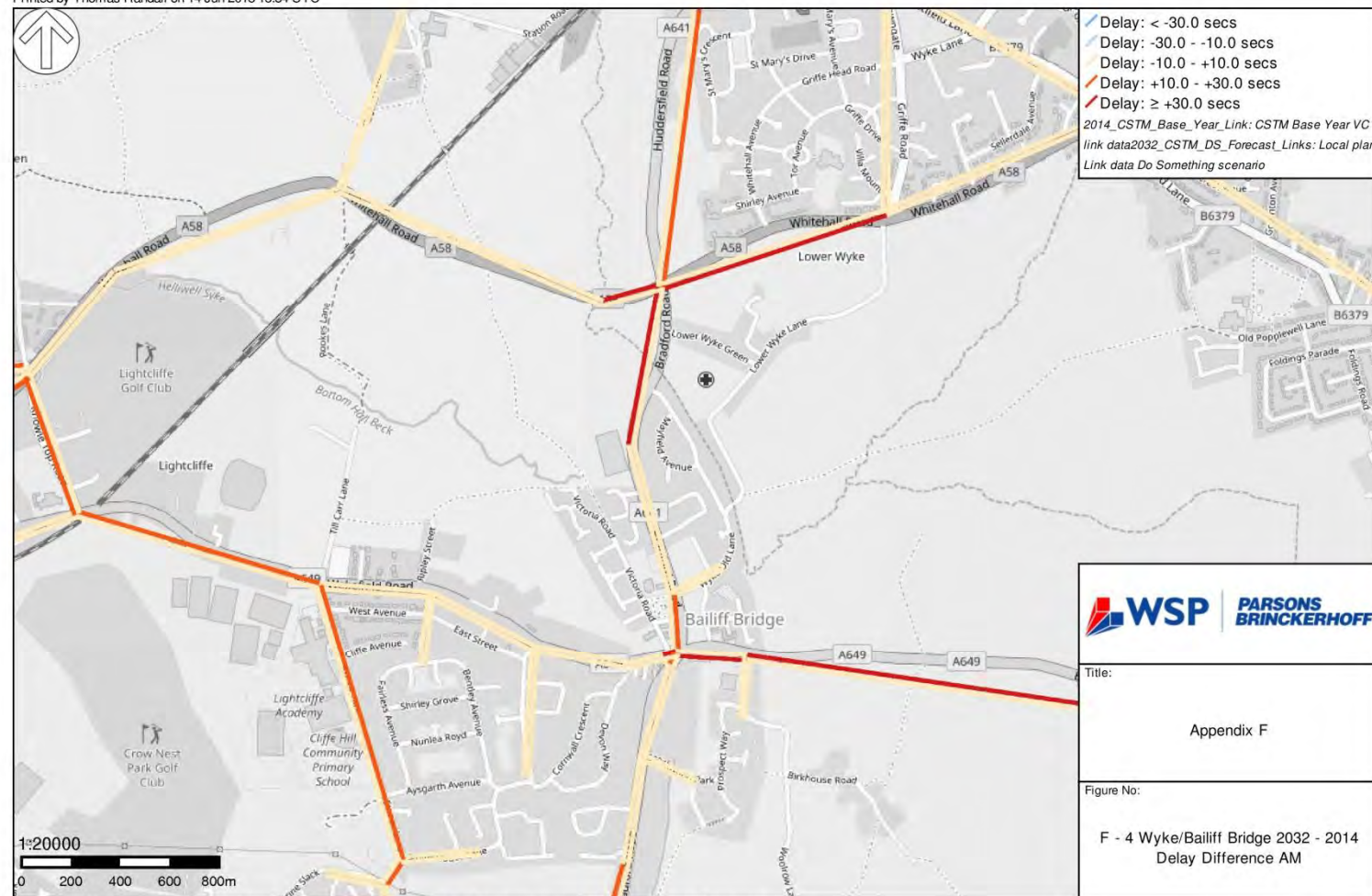
Printed by Thomas Randall on 14 Jun 2018 15:24 UTC



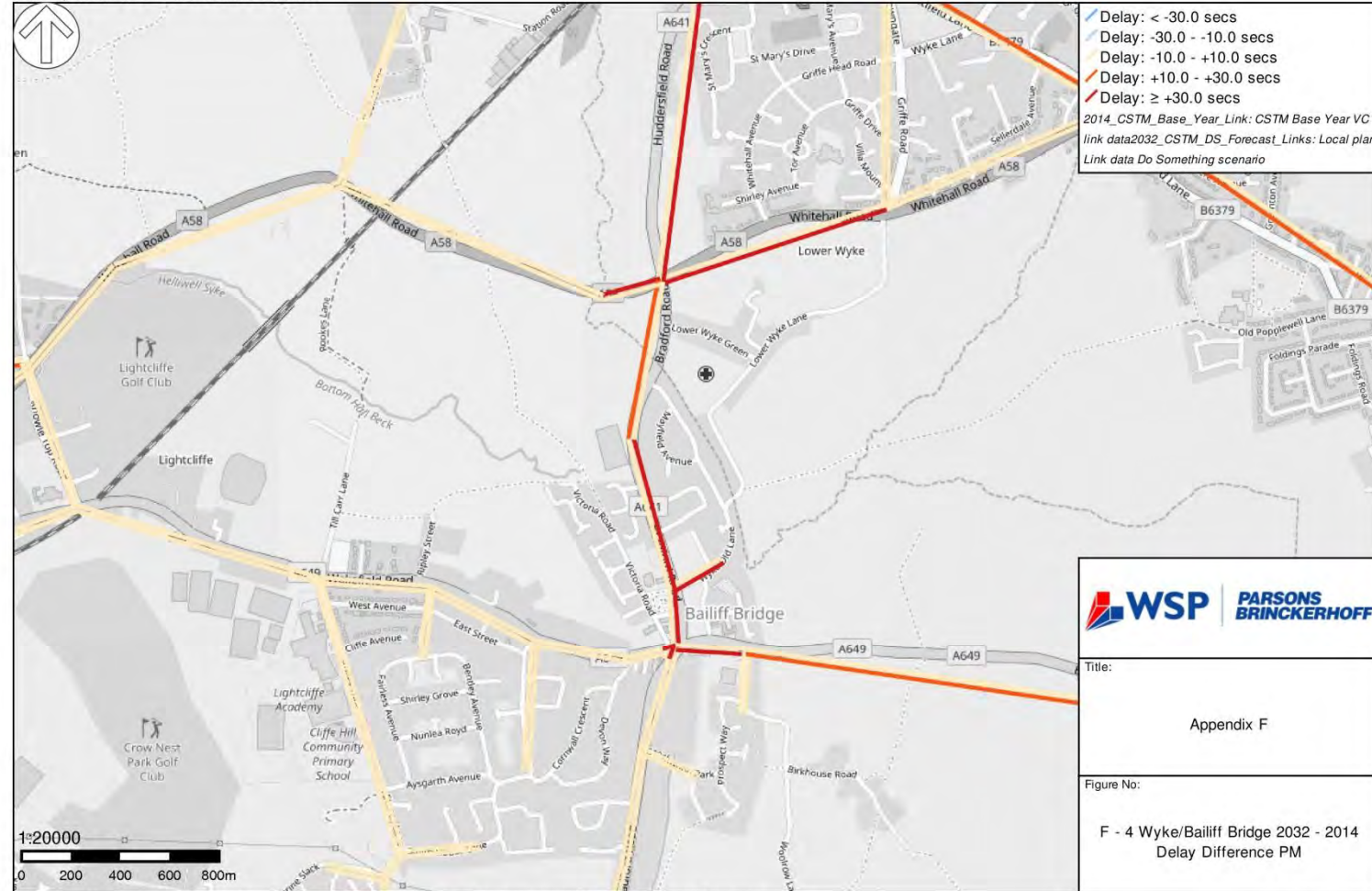
Printed by Thomas Randall on 14 Jun 2018 15:27 UTC



Printed by Thomas Randall on 14 Jun 2018 15:34 UTC

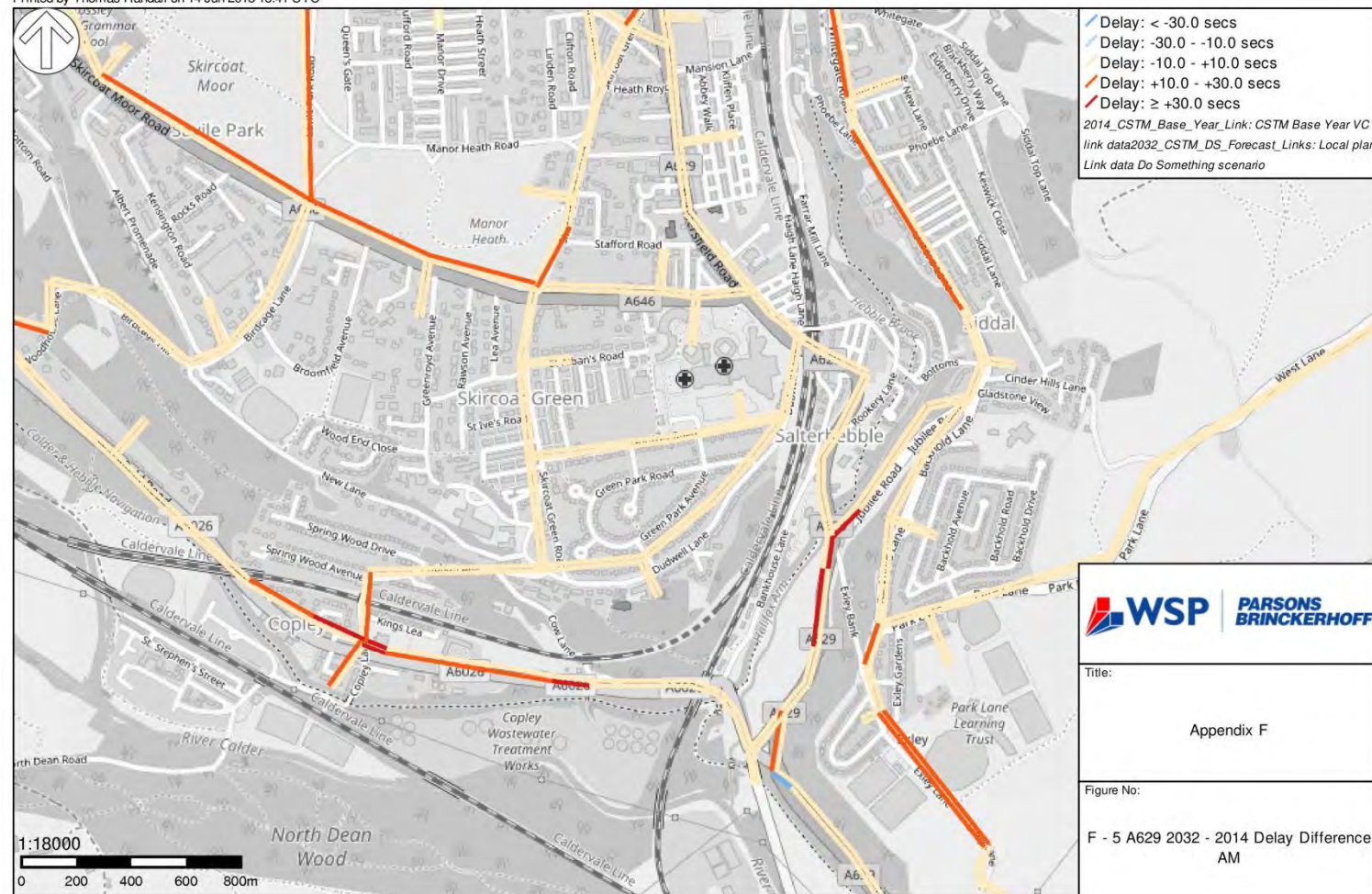


Printed by Thomas Randall on 14 Jun 2018 15:35 UTC



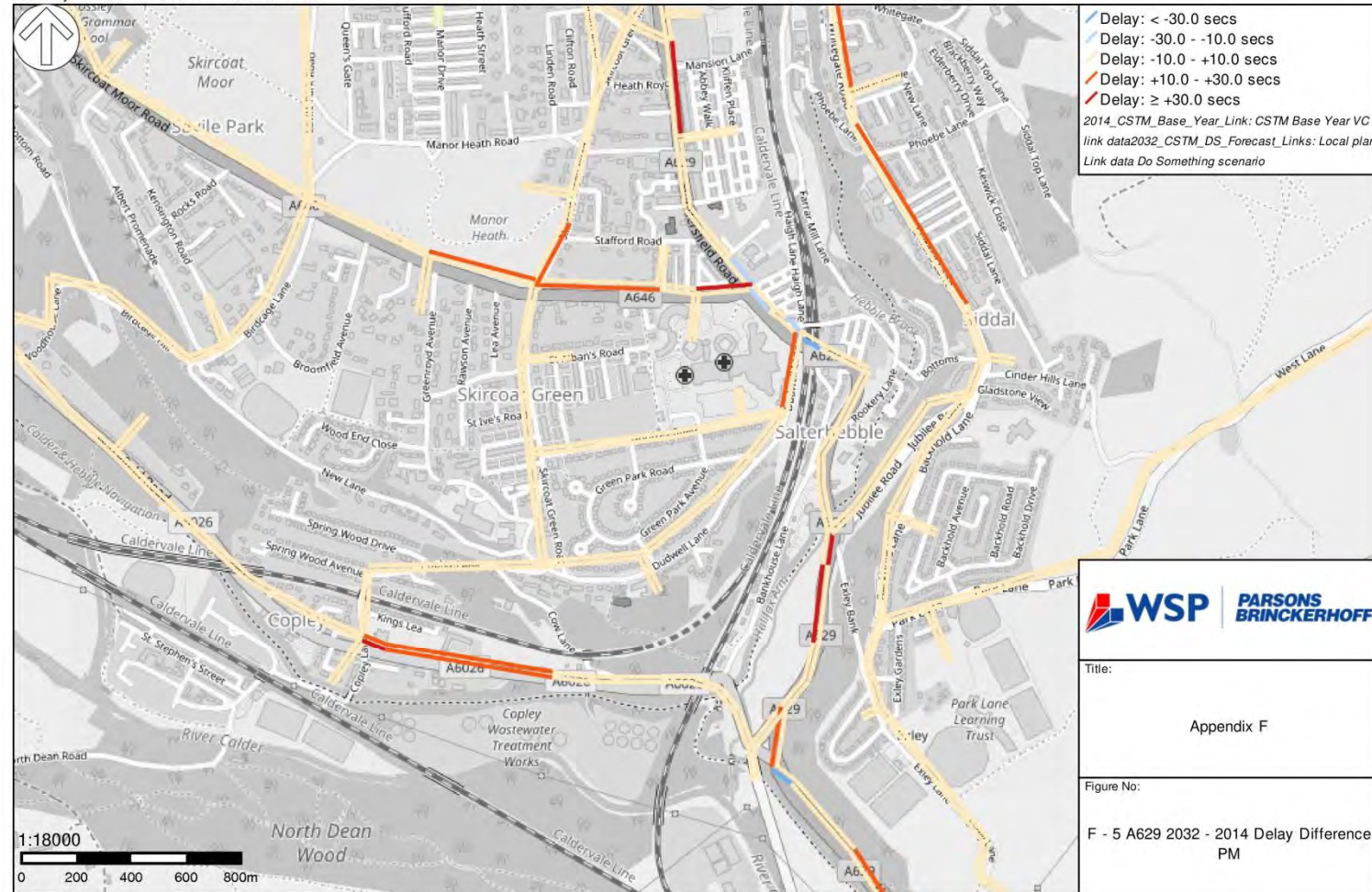
© OpenStreetMap contributors Contains Ordnance Survey data © Crown copyright and database right 2010-15; WSP | Parsons Brinckerhoff

Printed by Thomas Randall on 14 Jun 2018 15:41 UTC



© OpenStreetMap contributors Contains Ordnance Survey data © Crown copyright and database right 2010-15; WSP | Parsons Brinckerhoff

Printed by Thomas Randall on 14 Jun 2018 15:38 UTC





Three White Rose Office Park
Millshaw Park Lane
Leeds
LS11 0DL

wsp.com